

Product datasheet for **RC204849**

CD48 (NM_001778) Human Tagged ORF Clone

Product data:

Product Type:	Expression Plasmids
Product Name:	CD48 (NM_001778) Human Tagged ORF Clone
Tag:	Myc-DDK
Symbol:	CD48
Synonyms:	BCM1; BLAST; BLAST1; hCD48; mCD48; MEM-102; SLAMF2
Mammalian Cell Selection:	Neomycin
Vector:	pCMV6-Entry (PS100001)
E. coli Selection:	Kanamycin (25 ug/mL)
ORF Nucleotide Sequence:	>RC204849 ORF sequence Red=Cloning site Blue=ORF Green=Tags(s)

TTTTGTAATACGACTCACTATAGGGCGCCGGGAATTCGTCGACTGGATCCGGTACCGAGGAGATCTGCC
GCC**CGATCGCC**

ATGTGCTCCAGAGGTTGGGATTCGTGTCTGGCTCTGGAATTGCTACTGCTGCCTCTGCTCACTCCTGGTGA
CCAGCATTCAAGGTCACCTGGTACATATGACCGTGGTCTCCGGCAGCAACGTGACTCTGAACATCTCTGA
GAGCCTGCCTGAGAACTACAACTAACTAACCTGGTTTTACTTTTCGACCAGAAGATTGTAGAATGGGAT
TCCAGAAAATCTAAGTACTTTGAATCAAATTTAAAGGCAGGGTCAGACTTGATCCTCAGAGTGGCGCAC
TGTACATCTCTAAGTCCAGAAAGAGGACAACAGCACCTACATCATGAGGGTGTGAAAAAGACTGGGAA
TGAGCAAGAAATGGAAGATCAAGCTGCAAGTGCTTGACCCGTACCCAAGCCTGTCATCAAAATTGAGAAG
ATAGAAGACATGGATGACAACCTGTTATTTGAACTGTCATGTGTGATACCTGGCGAGTCTGTAACTACA
CCTGGTATGGGGACAAAAGGCCCTTCCCAAAGGAGCTCCAGAACAGTGTGCTTGAACCACCCCTTATGCC
ACATAATTACTCCAGGTGTTATACTTGCCAAGTCAGCAATTCTGTGAGCAGCAAGAAATGGCACGGTCTGC
CTCAGTCCACCCTGTACCCTGGCCCGTCTTTGGAGTAGAATGGATTGCAAGTTGGCTAGTGGTCACGG
TGCCACCATTCTGGCCTGTTACTTACC

ACGCGTACGCGGCCGCTCGAGCAGAACTCATCTCAGAAGAGGATCTGGCAGCAAATGATATCCTGGATT
ACAAGGATGACGACGATAAGGTTTAA



[View online »](#)

Protein Sequence: >RC204849 protein sequence
Red=Cloning site Green=Tags(s)

MCSRGWDSCLALELLLLLPLSLLVTSIQGHLVHMTVVSGSNVTLNISESLPENYKQLTWFYTFDQKIVEWD
 SRKSKYFESKFKGRVRLDPQSGALYISKVQKEDNSTYIMRVLKKTGNEQEWKIKLQVLDPVKPKVIEK
 IEDMDDNCYLKLSCVIPGESVNYTWYGDKRPFKELQNSVLETTLMPHNYSRCYTCQVNSVSSKNGTVC
 LSPPTLARSFGVEWIASWLVTVPVPTILGLLLT

TRTRPLEQKLISEEDLAANDILDYKDDDDKV

Chromatograms: https://cdn.origene.com/chromatograms/mk6062_c03.zip

Restriction Sites: SgfI-MluI

Cloning Scheme:



ACCN: NM_001778

ORF Size: 729 bp

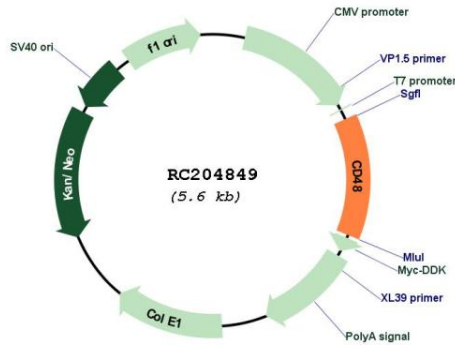
OTI Disclaimer: Due to the inherent nature of this plasmid, standard methods to replicate additional amounts of DNA in E. coli are highly likely to result in mutations and/or rearrangements. Therefore, OriGene does not guarantee the capability to replicate this plasmid DNA. Additional amounts of DNA can be purchased from OriGene with batch-specific, full-sequence verification at a reduced cost. Please contact our customer care team at custsupport@origene.com or by calling 301.340.3188 option 3 for pricing and delivery.

The molecular sequence of this clone aligns with the gene accession number as a point of reference only. However, individual transcript sequences of the same gene can differ through naturally occurring variations (e.g. polymorphisms), each with its own valid existence. This clone is substantially in agreement with the reference, but a complete review of all prevailing variants is recommended prior to use. [More info](#)

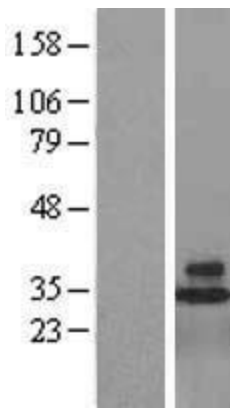
OTI Annotation: This clone was engineered to express the complete ORF with an expression tag. Expression varies depending on the nature of the gene.

Components:	The ORF clone is ion-exchange column purified and shipped in a 2D barcoded Matrix tube containing 10ug of transfection-ready, dried plasmid DNA (reconstitute with 100 ul of water).
Reconstitution Method:	<ol style="list-style-type: none">1. Centrifuge at 5,000xg for 5min.2. Carefully open the tube and add 100ul of sterile water to dissolve the DNA.3. Close the tube and incubate for 10 minutes at room temperature.4. Briefly vortex the tube and then do a quick spin (less than 5000xg) to concentrate the liquid at the bottom.5. Store the suspended plasmid at -20°C. The DNA is stable for at least one year from date of shipping when stored at -20°C.
RefSeq:	<u>NM_001778.2, NP_001769.2</u>
RefSeq Size:	1155 bp
RefSeq ORF:	732 bp
Locus ID:	962
UniProt ID:	<u>P09326</u>
Cytogenetics:	1q23.3
Domains:	IG
Protein Families:	Druggable Genome, Transmembrane
Protein Pathways:	Natural killer cell mediated cytotoxicity
MW:	27.7 kDa
Gene Summary:	This gene encodes a member of the CD2 subfamily of immunoglobulin-like receptors which includes SLAM (signaling lymphocyte activation molecules) proteins. The encoded protein is found on the surface of lymphocytes and other immune cells, dendritic cells and endothelial cells, and participates in activation and differentiation pathways in these cells. The encoded protein does not have a transmembrane domain, however, but is held at the cell surface by a GPI anchor via a C-terminal domain which maybe cleaved to yield a soluble form of the receptor. Multiple transcript variants encoding different isoforms have been found for this gene. [provided by RefSeq, Dec 2011]

Product images:



Circular map for RC204849



Western blot validation of overexpression lysate (Cat# [LY419755]) using anti-DDK antibody (Cat# [TA50011-100]). Left: Cell lysates from untransfected HEK293T cells; Right: Cell lysates from HEK293T cells transfected with RC204849 using transfection reagent MegaTran 2.0 (Cat# [TT210002]).