

Product datasheet for **RC204845**

NDOR1 (NM_014434) Human Tagged ORF Clone

Product data:

Product Type:	Expression Plasmids
Product Name:	NDOR1 (NM_014434) Human Tagged ORF Clone
Tag:	Myc-DDK
Symbol:	NDOR1
Synonyms:	bA350O14.9; CIAE1; NR1
Mammalian Cell Selection:	Neomycin
Vector:	pCMV6-Entry (PS100001)
E. coli Selection:	Kanamycin (25 ug/mL)



[View online »](#)

ORF Nucleotide Sequence:

>RC204845 ORF sequence
 Red=Cloning site Blue=ORF Green=Tags(s)

TTTTGTAATACGACTCACTATAGGGCGGCCGGGAATTCGTCGACTGGATCCGGTACCGAGGAGATCTGCC
 GCC**CGGATCGCC**

ATGCCAGCCCGCAGCTTCTGGTCTCTTCGGCAGCCAGACAGGCACGGCTCAGGATGTGTGGAGAGAC
 TGGGTCGCGAGGCCCGCGCCGGCGGCTTGGCTGCCGGTGCAGGCCCTGGACTCTACCCGGTGGTGAA
 TCTGATTAACGAGCCCTGGTGATATTTGTTTGTGCAACTACAGGCCAAGGAGACCCCTGACAACATG
 AAGAACTTCTGGAGGTTTATATTCGGAAGAACCTGCCCTCCACTGCCCTCTGTCAGATGGACTTTGCCG
 TCCTGGGCTCGGGGACTCCTACAGCCAAGTTCAACTTCGTGGCCAAGAAGCTGCACCAGCGCTACT
 GCAGCTTGGGGCAGCGCCCTCTGCCGTGTGCCTGGCGATGACCAGCATGAGCTGGGGCCGACGCT
 GCTGTGGACCCCTGGCTGCGAGACTTGTGGACAGGGTCTGGGGCTGTACCCGCCGCTCCGGGCTCA
 CTGAGATCCCTCCCGAGTCCCCTGCCCTCAAGTTCACCTGTCTTCTCAAGAGGCCACCCAGCAC
 GGGCTCTGAGGGCAGCGGTAGCTCACCCGGCTCTCAGGAGCCCCGTGAGAGTGAAGCCCTTCTTA
 GCACCATGATCTCAACAGAGAGTACCCGGCCCTCCCACTTCCAGGACGTTCCGGCTGATTGAGTTTG
 ACATCTTGGGCTCTGGCATCAGCTTTGCTGCTGGTGTGTTGGTGTGATTAGCCCTCAACTCGGCTGC
 CCATGTCCAGCGTTCTGCCAGGTGCTGGGCTGGACCCTGACCAGCTTTCATGCTGCAGCCGCGGGAG
 CCAGATGTCTCTCCCCACGAGGCTGCCCCAGCCCTGCTCCATGCGGCACCTCGTGTCCCACTACCTGG
 ACATCGCCAGCGTGCCTCGCCGCTCCTTCTTGAACCTCTGGCCTGTCTATCCCTCCATGAGCTGGAGCG
 GGAGAAGTGTGGAGTTCAGTTCTGCCAAGGCCAGGAGGAGCTTTGAATACTGCAACCGCCCCCGC
 AGGACCATCTGGAGTGTCTGTGACTTCCCGCACACAGTCCCGCCATCCCTCCGACTACCTGTTGG
 ACCTCATCCCCGTTATCCGGCCGAGGGCCTTCTCCATCGCTCCTCGCTGCTGACTACCCCTCAGGGT
 GCAGATCCTCGTGGCTGTAGTGCAGTTCAGACTCGCCTCAAGGAGCCCCGCCGGGCTCTGCTCCTCC
 TGGCTGGCATCCCTGGACCCTGGCAAGGACCTGTCCGGTGCCCTCTGGGTGCGGCTGGGAGTCTGG
 CCTTCCCAGAGACACCAGACACCTGTGATCATGGTGGGGCTGGCACTGGGGTAGCCCCCTTCCGAGC
 AGCCATCCAGGAGCGTGTGGCCAGGGCCAGACTGGAACTTCTTGTTTTTGGTGCCGCTGGCGGGAC
 CAAGACTTCTACTGGAGGCTGAGTGGCAGGAGCTGGAGAAGCGGGACTGTGACCCTCATCCCTGCCT
 TCTCCCGGAACAGGAGCAGAAAATATATGTGCAGCACCGGCTCCGGGAGCTGGGGTCTGTGTGGGA
 ACTGCTGGACCGCAGGGTGCATACTTCTACCTGGCAGGCAACGCCAAGTCCATGCCAGCGGACGTCTCG
 GAAGCCCTGATGTCCATCTTCCAGGAGGAGGGTGGACTCTGCAGCCCGGACGCAGCCGCTATCTAGCCA
 GGCTCCAGCAGACACGGCGCTTCCAGACAGAGACGTGGGCC

ACGCGTACGCGGCCGCTCGAGCAGAAACTCATCTCAGAAGAGGATCTGGCAGCAAATGATATCCTGGATT
 ACAAGGATGACGACGATAAGGTTTAA

Protein Sequence:

>RC204845 protein sequence
 Red=Cloning site Green=Tags(s)

MPSPQLLVLFQSQTGTAQDVSERLGREARRRRLGCRVQALDSYPVVNLINELVIFVCATTGQGDPPDNM
 KNFWRIFRKNLPSTALCQMDFAVLGLGDSSYAKFNFVAKKLHRRLLQLGGSALLPVCLGDDQHELGPDA
 AVDPWLRDLWDRVLGLYPPPPGLTEIPPGVPLPSKFTLLFLQEAPSTGSEQRVAHPGSQEPPSESKPFL
 APMISNQRVTGPHSHFQDVRLEFDILGSGISFAAGDVVLIQPSNSAAHVQRFCQVLGLDPDQLFMLQPRE
 PDVSSPTRLPQPCSMRHLVSHYLDIASVPRRSFPELLACLSHELEREKLLFSSAQGEELFEYCNRPR
 RTILEVLCDFPHTAAAIPPDYLLDLIPVIRPRAFSIASSLLTHPSRLQILVAVVQFQTRLKEPRRGLCSS
 WLASLDPGQGQPVVRVPLWVRPGLAFPETPDTPIVIMVPGTGVAPFRAAIQERVAQQTGNFLFFGCRWRD
 QDFYWEAEWQELEKRDCLTIPAFSREQEKIYVQHRLRELGSLVWELLDRQGAYFYLAGNAKSMADV
 EALMSIFQEEGGLCSPDAAAYLARLQTRRFQTTETWA

TRTRPLEQKLISEEDLAANDILDYKDDDDKV

Chromatograms:

https://cdn.origene.com/chromatograms/mk6217_c04.zip

Restriction Sites: SgfI-MluI

Cloning Scheme:



ACCN: NM_014434

ORF Size: 1791 bp

OTI Disclaimer: The molecular sequence of this clone aligns with the gene accession number as a point of reference only. However, individual transcript sequences of the same gene can differ through naturally occurring variations (e.g. polymorphisms), each with its own valid existence. This clone is substantially in agreement with the reference, but a complete review of all prevailing variants is recommended prior to use. [More info](#)

OTI Annotation: This clone was engineered to express the complete ORF with an expression tag. Expression varies depending on the nature of the gene.

Components: The ORF clone is ion-exchange column purified and shipped in a 2D barcoded Matrix tube containing 10ug of transfection-ready, dried plasmid DNA (reconstitute with 100 ul of water).

Reconstitution Method:

1. Centrifuge at 5,000xg for 5min.
2. Carefully open the tube and add 100ul of sterile water to dissolve the DNA.
3. Close the tube and incubate for 10 minutes at room temperature.
4. Briefly vortex the tube and then do a quick spin (less than 5000xg) to concentrate the liquid at the bottom.
5. Store the suspended plasmid at -20°C. The DNA is stable for at least one year from date of shipping when stored at -20°C.

RefSeq: [NM_014434.3](#)

RefSeq Size: 4850 bp

RefSeq ORF: 1794 bp

Locus ID: 27158

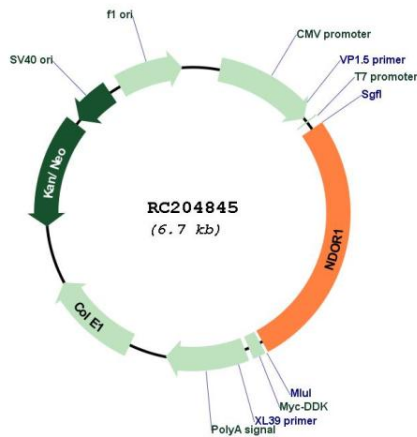
UniProt ID: [Q9UHB4](#)

Cytogenetics: 9q34.3

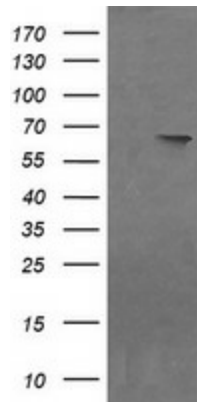
MW: 66.8 kDa

Gene Summary: This gene encodes an NADPH-dependent diflavin reductase that contains both flavin mononucleotide (FMN) and flavin adenine dinucleotide (FAD) binding domains. The encoded protein catalyzes the transfer of electrons from NADPH through FAD and FMN cofactors to potential redox partners. Alternative splicing results in multiple transcript variants. [provided by RefSeq, Mar 2012]

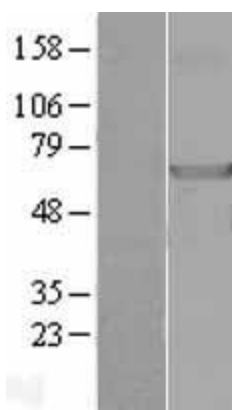
Product images:



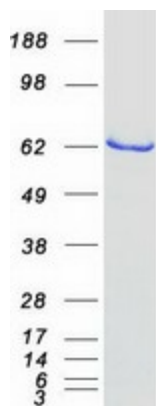
Circular map for RC204845



HEK293T cells were transfected with the pCMV6-ENTRY control (Cat# [PS100001], Left lane) or pCMV6-ENTRY NDOR1 (Cat# RC204845, Right lane) cDNA for 48 hrs and lysed. Equivalent amounts of cell lysates (5 ug per lane) were separated by SDS-PAGE and immunoblotted with anti-NDOR1 (Cat# [TA505464]). Positive lysates [LY415283] (100ug) and [LC415283] (20ug) can be purchased separately from OriGene.



Western blot validation of overexpression lysate (Cat# [LY415283]) using anti-DDK antibody (Cat# [TA50011-100]). Left: Cell lysates from untransfected HEK293T cells; Right: Cell lysates from HEK293T cells transfected with RC204845 using transfection reagent MegaTran 2.0 (Cat# [TT210002]).



Coomassie blue staining of purified NDOR1 protein (Cat# [TP304845]). The protein was produced from HEK293T cells transfected with NDOR1 cDNA clone (Cat# RC204845) using MegaTran 2.0 (Cat# [TT210002]).