

Product datasheet for **RC204843**

PAR6 (PARD6A) (NM_001037281) Human Tagged ORF Clone

Product data:

Product Type:	Expression Plasmids
Product Name:	PAR6 (PARD6A) (NM_001037281) Human Tagged ORF Clone
Tag:	Myc-DDK
Symbol:	PAR6
Synonyms:	PAR-6A; PAR6; PAR6alpha; PAR6C; TAX40; TIP-40
Mammalian Cell Selection:	Neomycin
Vector:	pCMV6-Entry (PS100001)
E. coli Selection:	Kanamycin (25 ug/mL)
ORF Nucleotide Sequence:	>RC204843 ORF sequence Red=Cloning site Blue=ORF Green=Tags(s)

TTTTGTAATACGACTCACTATAGGGCGGCCGGAATTCGTCGACTGGATCCGGTACCGAGGAGATCTGCC
GCC**CGATCGCC**

ATGGCCCCGGCCGAGAGGACTCCGGCGCGCAGTCCCGATAGCATCGTCGAGGTGAAGAGCAAATTTGACG
CCGAGTCCGACGCTTCGCGCTGCCTCGCGCTTCGGTGAGCGGCTTCCAGGAGTTCTCGCGGTTGCTGCG
GGCGGTGCACCAGATCCCGGGCCTGGACGTGCTACTTGGCTATACGGATGCTCATGGCGACCTGCTGCC
CTACCAACGACGACAGCCTGCACCGGGCCTGGCCAGCGGGCCCCGCCACTGCGCCTACTGGTGCAGA
AGCGGGAAGCTGACTCCAGCGGCTGGCTTTTGCCTCCAATCTCTGCAGCGGCGCAAGAAAGGGCTCTT
GCTGCGGCCAGTGGCACCCCTGCGCACCCGGCCACCCCTTGCTAATCAGCCTGCCCAAGATTTCCGCCAG
GTTTCCTCAGTCATAGACGTGGACCTACTGCCTGAGACCCACCGAGGGTGCAGGCTGCACAAGCATGGTT
CAGACCGCCCCCTGGGCTTCTACATCCGAGATGGCATGAGCGTGCCTGGCTCCCCAGGGCCTGGAGCG
GGTTCCAGGAATCTTCATCTCCCGCCTGGTACGTGGGGTCTGGCTGAGAGTACAGGGCTGCTGGCGGTC
AGTGATGAGATCCTCGAGGTCAATGGCATTGAAGTAGCCGGGAAGACCTTGGACCAAGTGACGGACATGA
TGGTTGCCAACAGCCATAACCTCATTGTCACTGTCAAGCCCGCAACAGCGCAATAACCTGGTGGCAGG
GGCATCTGGGCGTTTGACAGGTCCTCCCTCTGCAGGGCCTGGCCTGCTGAGCCTGATAGTGACGATGAC
AGCAGTGACCTGGTCATTGAGAACCAGCCAGCCTCCAGTTCCAATGGGCTGTCTCAGGGCCCCCGTGCT
GGGACCTGCACCCCTGGCTGCCGACATCCTGGTACCCGACGCTCTCTGCCCTCCCTGGATGACCAGGAGCA
GGCCAGTTCTGGCTGGGGAGTGCATTGAGGAGATGGTAGTGCTTCAGCCTC

ACGCGTACGCGGCCGCTCGAGCAGAACTCATCTCAGAAGAGGATCTGGCAGCAAATGATATCCTGGATT
ACAAGGATGACGACGATAAGGTTTAA



[View online »](#)

Reconstitution Method:

1. Centrifuge at 5,000xg for 5min.
2. Carefully open the tube and add 100ul of sterile water to dissolve the DNA.
3. Close the tube and incubate for 10 minutes at room temperature.
4. Briefly vortex the tube and then do a quick spin (less than 5000xg) to concentrate the liquid at the bottom.
5. Store the suspended plasmid at -20°C. The DNA is stable for at least one year from date of shipping when stored at -20°C.

RefSeq: [NM_001037281.2](#)

RefSeq Size: 1270 bp

RefSeq ORF: 1038 bp

Locus ID: 50855

UniProt ID: [Q9NPB6](#)

Cytogenetics: 16q22.1

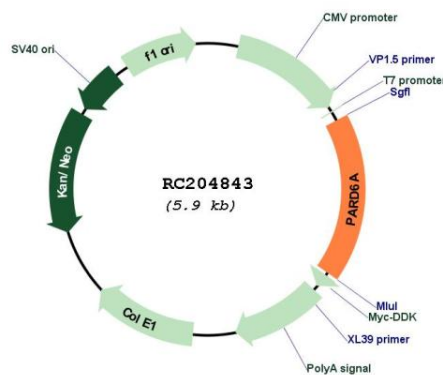
Protein Families: Druggable Genome, Transcription Factors

Protein Pathways: Endocytosis, Tight junction

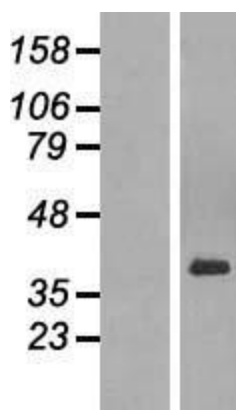
MW: 37.3 kDa

Gene Summary: This gene is a member of the PAR6 family and encodes a protein with a PSD95/Disc-large/ZO1 (PDZ) domain and a semi-Cdc42/Rac interactive binding (CRIB) domain. This cell membrane protein is involved in asymmetrical cell division and cell polarization processes as a member of a multi-protein complex. The protein also has a role in the epithelial-to-mesenchymal transition (EMT) that characterizes the invasive phenotype associated with metastatic carcinomas. Alternate transcriptional splice variants, encoding different isoforms, have been characterized. [provided by RefSeq, Jul 2008]

Product images:



Circular map for RC204843



Western blot validation of overexpression lysate (Cat# [LY421938]) using anti-DDK antibody (Cat# [TA50011-100]). Left: Cell lysates from untransfected HEK293T cells; Right: Cell lysates from HEK293T cells transfected with RC204843 using transfection reagent MegaTran 2.0 (Cat# [TT210002]).