

Product datasheet for **RC204842**

TH1L (NELFCD) (NM_198976) Human Tagged ORF Clone

Product data:

Product Type:	Expression Plasmids
Product Name:	TH1L (NELFCD) (NM_198976) Human Tagged ORF Clone
Tag:	Myc-DDK
Symbol:	TH1L
Synonyms:	HSPC130; NELF-C; NELF-D; TH1; TH1L
Mammalian Cell Selection:	Neomycin
Vector:	pCMV6-Entry (PS100001)
E. coli Selection:	Kanamycin (25 ug/mL)



[View online »](#)

ORF Nucleotide Sequence:

>RC204842 ORF sequence
 Red=Cloning site Blue=ORF Green=Tags(s)

TTTTGTAATACGACTCACTATAGGGCGGCCGGGAATTCGTCGACTGGATCCGGTACCGAGGAGATCTGCC
 GCC**CGGATCGCC**

ATGGCGGGGGCCGTGCCGGCGCCATCATGGACGAGGACTACTACGGGAGCGCGCCGAGTGGGGCGACG
 AGGCTGACGGCGGCCAGCAGGAGGATGATTCTGGAGAAGGAGAGGATGATGCGGAGGTTACGAAGAATG
 CCTGCATAAAATTTCCACCCGGGATTATATCATGGAACCCCTCCATCTTCAACACTCTGAAGAGGATTTT
 CAGGCAGGAGGGTCTCCAGAGAATGTTATCCAGCTCTTATCTGAAAACACTACACCGCTGTGGCCAGACTG
 TGAACCTGCTGGCCGAGTGGCTCATTGACAGAGGTGTTGAGCCAGTGCAGGTTCCAGGAACTGTGAAAA
 TCACTTGAAGAGTTTGTGATCAAACATTTGACCCCGCAAAGCAGATTCTATTTTTACTGAAGAAGGA
 GAGACCCAGCGTGGCTGGAACAGATGATTGCACATACCAGTGGCGGGACCTTTTTATAAACTGGCTG
 AAGCCCATCCAGACTGTTTGTGCTGAACCTCACCGTTAAGCTTATTTCTGACGCAGGTTACCAGGGGA
 GATCACCAGTGTGTCCACAGCATGCCAGCAGCTAGAAGTGTCTCGAGAGTGTCCGGACCTCTCTAGCT
 ACAATTTTAGATGGAGGAGAAGAAAACCTTGAAAAAATCTCCCTGAGTTTGCTAAGATGGTGTGCCACG
 GGGAGCACACGTACCTGTTTGCCAGGCCATGATGTCCGTGTGCCCAGGAGGAGCAGGGGGGCTCCGC
 TGTGCGCAGGATCGCCAGGAAGTGCAGCGCTTGCCAGGAGAAAGTTCATGACCCAGTCCAGATCACA
 CTAGCCTTGGGCACAGCTGCCTCCTACCCAGGGCCTGCCAGGCTCTCGGGGCCATGCTGTCCAAAGGAG
 CCCTGAACCTGTGACATCACCGTCTGTTCAAGATGTTCAAGAATGGACCCCTCCCGGTTGAAC
 TATCCGCGTCCAGCCTCCTGGACCTGTTGATGACAGTCACTCTTAAACCAGGGGCTCGGATCAACCAG
 GACCACAAGCACAATAACATCCACATCTTGCCGTACGCAGCAAGCGTGGTTGAGACCTGGAAGAAGAACA
 AGCGAGTGAGCATCAATAAAGATGAGCTGAAGTCAACGTCAAAAGCTGTGAAACCGTTCACAATTTGTG
 TTGCAACGAGAACAAGGGGCTCTGAACTAGTGGCAGAATTGAGCACACTTTATCAGTGTATTAGGTTT
 CCAAGTGTAGCAATGGGTGTGCTGAAGTGGGTGGATTGGACTGTATCAGAACCAAGTACTTTACAGTGC
 AGACTGACCATACCCCTGTCCACCTGGCGTTGCTGGATGAGATCAGCACCTGCCACCAGCTCCTGCACCC
 CCAGGTCTGCAGCTGCTTGTAAAGCTTTTGGACTGAGCACTCCAGCTGGACGTGATGGAGCAGCTT
 GAGTTGAAGAAGACTGCTGGACAGGATGGTTCACCTGCTGAGTCGAGGTTATGTACTTCTGTTGTCA
 GTTACATCCGAAAGTGTCTGGAGAAGCTGGACACTGACATTTCACTCATTGCTATTTTGTCACTGAGGT
 GCTGGACGTATTGCTCCTCTTATACCTGACTTCGTGCACTTTTCTCCCATCCTGGAGAATGAC
 AGCATCGCAGGTACCATCAAACGGAAGCGGAGCATGACCCTGTGACGGAGTTTATAGCTACTGCAAT
 CTAACCTCATCATGGTGAAC

ACGCGTACGCGGGCCGCTCGAGCAGAAACTCATCTCAGAAGAGGATCTGGCAGCAAATGATATCCTGGATT
 ACAAGGATGACGACGATAAGGTTTAA

Protein Sequence:

>RC204842 protein sequence
 Red=Cloning site Green=Tags(s)

MAGAVPGAIMDEDYYGSAEAWGDEADGGQQEDDSGEGEDDAEVQQECLHKFSTRDYIMEPSIFNTLKRYF
 QAGGSPENVIQLLSENYTAVAQTVNLLAEWLIQTGVEPVQVQETVENHLKSLLIKHFDPKADSIFTEEG
 ETPAWLEQMIHATTWRDLFYKLAEHPDCLMLNFTVKLISDAGYQGEITSVSTACQQLVFSRVLRTSLA
 TILDGGEENLEKNLPEFAKMOVCHGEHTYLFQAAMMSVLAQEEQGGSAVRRIAQEVQRFQAEKGHDASQIT
 LALGTAASYPRACQALGAMLKSGALNPADITVLFKMFSTMDPPPVELIRVPAFLDLFMQSLFKPGARINQ
 DHKHKYIHILAYAAASVETWKKNKRVSIKDELKSTSKAVETVHNLCCNENKGASELVAELSTLYQCIRF
 PVVAMGVLKWDVTVSEPRYFQLQTDHTPVHLALLDEISTCHQLLHPQVLQLLVKLFETEHSQLDYMEQL
 ELKKTLLDRMVHLLSRGYVLPVVSYIRKCLEKLDTDIISLIRYFVTEVLDVIAPPYTSDFVQLFLPILEND
 SIAGTIKTEGEHDPVTEFIAHCKSNFIMVN

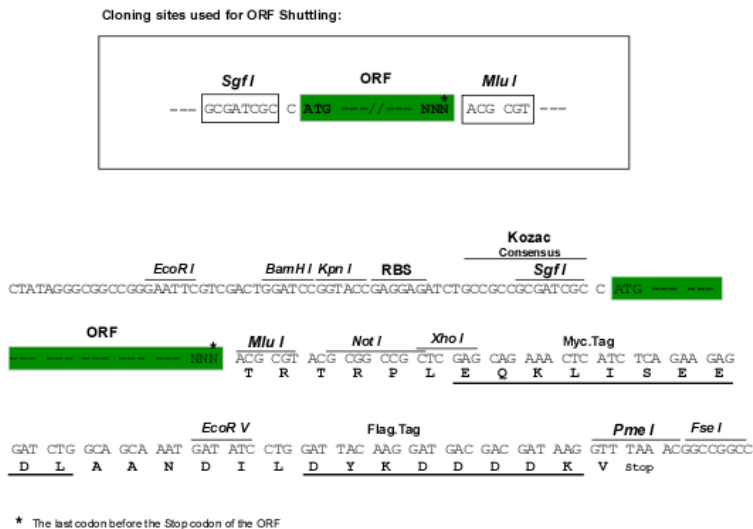
TRTRPLEQKLISEEDLAANDILDYKDDDDKV

Chromatograms:

https://cdn.origene.com/chromatograms/mk6673_h11.zip

Restriction Sites: SgfI-MluI

Cloning Scheme:



ACCN: NM_198976

ORF Size: 1770 bp

OTI Disclaimer: The molecular sequence of this clone aligns with the gene accession number as a point of reference only. However, individual transcript sequences of the same gene can differ through naturally occurring variations (e.g. polymorphisms), each with its own valid existence. This clone is substantially in agreement with the reference, but a complete review of all prevailing variants is recommended prior to use. [More info](#)

OTI Annotation: This clone was engineered to express the complete ORF with an expression tag. Expression varies depending on the nature of the gene.

Components: The ORF clone is ion-exchange column purified and shipped in a 2D barcoded Matrix tube containing 10ug of transfection-ready, dried plasmid DNA (reconstitute with 100 ul of water).

Reconstitution Method:

1. Centrifuge at 5,000xg for 5min.
2. Carefully open the tube and add 100ul of sterile water to dissolve the DNA.
3. Close the tube and incubate for 10 minutes at room temperature.
4. Briefly vortex the tube and then do a quick spin (less than 5000xg) to concentrate the liquid at the bottom.
5. Store the suspended plasmid at -20°C. The DNA is stable for at least one year from date of shipping when stored at -20°C.

RefSeq: [NM_198976.1](#), [NP_945327.1](#)

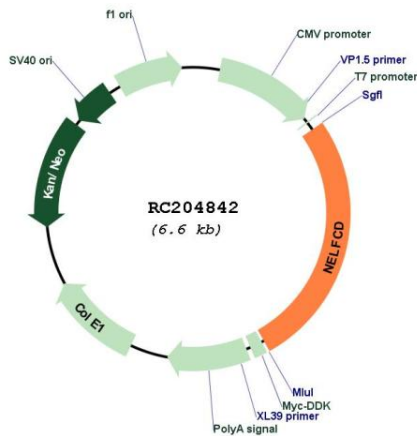
RefSeq Size: 2320 bp

RefSeq ORF: 1746 bp

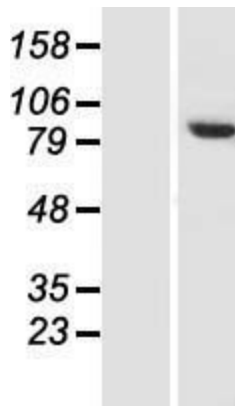
Locus ID: 51497

UniProt ID: [Q8IXH7](#)
Cytogenetics: 20q13.32
Protein Families: Transcription Factors
MW: 66.2 kDa
Gene Summary: The NELF complex of proteins interacts with the DSIF protein complex to repress transcriptional elongation by RNA polymerase II. The protein encoded by this gene is an essential part of the NELF complex. Alternative translation initiation site usage results in the formation of two isoforms with different N-termini. [provided by RefSeq, Jul 2008]

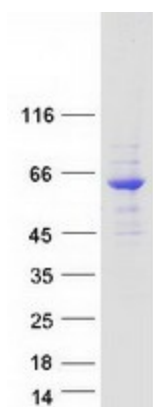
Product images:



Circular map for RC204842



Western blot validation of overexpression lysate (Cat# [LY404699]) using anti-DDK antibody (Cat# [TA50011-100]). Left: Cell lysates from untransfected HEK293T cells; Right: Cell lysates from HEK293T cells transfected with RC204842 using transfection reagent MegaTran 2.0 (Cat# [TT210002]).



Coomassie blue staining of purified NELFCD protein (Cat# [TP304842]). The protein was produced from HEK293T cells transfected with NELFCD cDNA clone (Cat# RC204842) using MegaTran 2.0 (Cat# [TT210002]).