

## Product datasheet for **RC204833**

### RPF1 (NM\_025065) Human Tagged ORF Clone

#### Product data:

Product Type:	Expression Plasmids
Product Name:	RPF1 (NM_025065) Human Tagged ORF Clone
Tag:	Myc-DDK
Symbol:	RPF1
Synonyms:	BXDC5
Mammalian Cell Selection:	Neomycin
Vector:	pCMV6-Entry (PS100001)
E. coli Selection:	Kanamycin (25 ug/mL)
ORF Nucleotide Sequence:	>RC204833 ORF sequence Red=Cloning site Blue=ORF Green=Tags(s)

TTTTGTAATACGACTCACTATAGGGCGGCCGGGAATTCGTCGACTGGATCCGGTACCGAGGAGATCTGCC  
GCC**CGATCGCC**

ATGGCGAAAGCCGGGATAAGAGCGGCAGCAGCGGGAAGAAAAGTCTAAAACGGAAAGCCGCTGCCGAAG  
AACTTCAGGAGGCTGCAGGCGTGGGGATGGGGCGACGGAAAACGGGTCCAACCCCGAAAGCGGCTGC  
CTTCCGCCAGGCTTTAGCATTTCGGAGATTAACAAACAGCGCGCACACTTAATGTTACGCGGTGG  
AAACAGCAGCAGCGGAAGAAAAGTTGGCAGCTAAGAAAAACTTAAAAAAGAAAGAGAGGCTCTTGCCG  
ATAAGGCTCCACAAAGCCTGTACCAAGACCATTGACAACCAGCGAGTGTATGATGAAACCACAGTAGA  
CCCTAATGATGAAGAGGTCGCTTATGATGAAGCTACAGATGAATTTGCTTCTACTTCAACAAACAGACT  
TCTCCAAGATTCTCATCACAACATCAGATAGACCTCATGGGAGAACAGTACGACTCTGTGAACAGCTCT  
CCACAGTTATACCAAACTCACATGTTTATTACAGAAGAGGACTGGCTCTGAAAAAATTATTCCACAGTG  
CATCGAAGAGATTTACAGACCTGATTGTTAATGAAGATCGTAAACCCCAATGGACTTATTTTG  
AGTCACTTGCCAAATGGCCAACTGTCATTTTAAATGAGCAGTGTTCGTCTTCGTAAGAAATTAAGA  
GAAGAGGCAAGGACCCACAGAACACATACCTGAAATAATTCTGAATAATTTTACAACACGGCTGGGTCA  
TTCAATTGGACGTATGTTTGCATCTCTTTCCATCAATCTCAATTTATCGGAAGGCAGGTTGCCACA  
TTCCACAATCAACGGGATTACATATTCTCAGATTTACAGATACATATTCAGGAGTAAAAGAAAGTGG  
GAATTCAGGAACCTGGACCAGTTTTACCTTAAATTAAGGTCTCTTCAGAAAGGAACCTTTGATTCTAA  
ATATGGAGAGTATGAATGGGTCCATAAGCCCCGGGAAATGGATACAAGTAGAAGAAAATTCCATTTA

**ACGCGT**ACGCGGCCGCTCGAGCAGAACTCATCTCAGAAGAGGATCTGGCAGCAATGATATCCTGGATT  
ACAAGGATGACGACGATAAGGTTTAA



[View online »](#)

**Protein Sequence:** >RC204833 protein sequence  
Red=Cloning site Green=Tags(s)

MAKAGDKSGSSGKKSLKRKAAAEELQEAAAGAGDENGVPKAAAFPPGFSISEIKNQRRLMFTRW  
 KQQQRKEKLAAKKKLKKEREALGDKAPPKVPKTIDNQRVYDETTVDPNDEEVAYDEATDEFASYFNKQT  
 SPKILITTSDRPHGRTVRLCEQLSTVIPNSHVYRRGLALKKIIPQCIARDFDLIVINEDRKTPLGLIL  
 SHLPNGPTAHFKMSSVRLRKEIKRRGKDPTHEIPEIILNNFTTRLGHSIGRMFASLFPHPNQFVIGRQVAT  
 FHNQRDYIFFRFHRYIFRSEKKGVIQELGPRFTLKLRLSLQKGTDFDSKYGEYEWVHKPREMDTSRRKFHL

TRTRPLEQKLISEEDLAANDILDYKDDDDKV

**Chromatograms:** [https://cdn.origene.com/chromatograms/mk6425\\_c05.zip](https://cdn.origene.com/chromatograms/mk6425_c05.zip)

**Restriction Sites:** SgfI-MluI

**Cloning Scheme:**



**ACCN:** NM\_025065

**ORF Size:** 1047 bp

**OTI Disclaimer:** The molecular sequence of this clone aligns with the gene accession number as a point of reference only. However, individual transcript sequences of the same gene can differ through naturally occurring variations (e.g. polymorphisms), each with its own valid existence. This clone is substantially in agreement with the reference, but a complete review of all prevailing variants is recommended prior to use. [More info](#)

**OTI Annotation:** This clone was engineered to express the complete ORF with an expression tag. Expression varies depending on the nature of the gene.

**Components:** The ORF clone is ion-exchange column purified and shipped in a 2D barcoded Matrix tube containing 10ug of transfection-ready, dried plasmid DNA (reconstitute with 100 ul of water).

**Reconstitution Method:**

1. Centrifuge at 5,000xg for 5min.
2. Carefully open the tube and add 100ul of sterile water to dissolve the DNA.
3. Close the tube and incubate for 10 minutes at room temperature.
4. Briefly vortex the tube and then do a quick spin (less than 5000xg) to concentrate the liquid at the bottom.
5. Store the suspended plasmid at -20°C. The DNA is stable for at least one year from date of shipping when stored at -20°C.

**RefSeq:** [NM\\_025065.5](#), [NP\\_079341.1](#)

**RefSeq Size:** 1975 bp

**RefSeq ORF:** 1050 bp

**Locus ID:** 80135

**UniProt ID:** [Q9H9Y2](#)

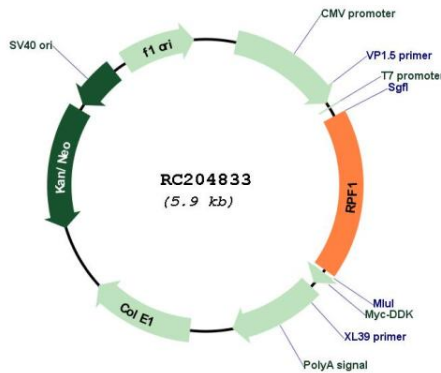
**Cytogenetics:** 1p22.3

**Domains:** Brix

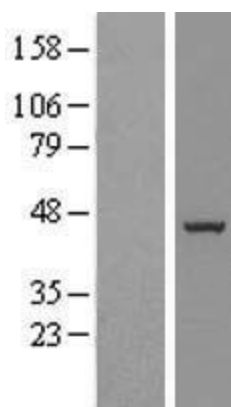
**MW:** 40.1 kDa

**Gene Summary:** May be required for ribosome biogenesis.[UniProtKB/Swiss-Prot Function]

**Product images:**



Circular map for RC204833



Western blot validation of overexpression lysate (Cat# [LY410936]) using anti-DDK antibody (Cat# [TA50011-100]). Left: Cell lysates from untransfected HEK293T cells; Right: Cell lysates from HEK293T cells transfected with RC204833 using transfection reagent MegaTran 2.0 (Cat# [TT210002]).