

## Product datasheet for RC204832

### TOMM40L (NM\_032174) Human Tagged ORF Clone

#### Product data:

Product Type:	Expression Plasmids
Product Name:	TOMM40L (NM_032174) Human Tagged ORF Clone
Tag:	Myc-DDK
Symbol:	TOMM40L
Synonyms:	TOMM40B
Mammalian Cell Selection:	Neomycin
Vector:	pCMV6-Entry (PS100001)
E. coli Selection:	Kanamycin (25 ug/mL)
ORF Nucleotide Sequence:	>RC204832 ORF sequence Red=Cloning site Blue=ORF Green=Tags(s)

TTTTGTAATACGACTCACTATAGGGCGGCCGGAATTCGTCGACTGGATCCGGTACCGAGGAGATCTGCC  
GCC**CGATCGCC**

ATGGGGAACACATTGGGCCTGGCACCAATGGGGACTTTGCCCGCCGGAGCCCCCGCGAGAGGAACCC  
TGCCCAACCTGGGAGCTTCGATGAGCTGCACCGTCTATGCAAAGATGTATCCAGCACAGATGGAGGG  
AGTGAAGCTCGTTGTCAACAAGTTCTGAGCAGCCATTTCCAGGTGGCGCACACTATACACATGAGTGCC  
CTGGGCTTGCCGGGATACACCTCCATGCGGCCTATGCAGGGGATTGGCAGCTCAGTCCCACTGAGGTGT  
TCCCCACTGTGGTAGGGGATATGGACAGCAGTGGCAGCCTGAACGCCAGGTCTTGCTCCTTTGGCAGA  
GCGGCTCCGAGCTAAGGCTGTCTTCCAGACGCAGCAGGCCAAGTTCTTGACATGGCAGTTTGATGGCGAG  
TATCGGGGAGATGACTACACAGCCACTCTGACCCTAGGAAATCCTGACCTGATTGGGGAGTCGGTGATCA  
TGGTTGCTCACTTCTGCAGAGCCTCACTCATCGGCTGGTGTGGGAGGAGAGCTAGTTTATCACCGGCG  
GCCAGGCGAAGAGGGGGCCATCTTGACACTGGCTGGGAAGTACTCGGCTGTACACTGGGTAGCTACATTG  
AATGTGGGATCAGGCGGGGCCATGCAAGTTACTACCACAGGGCAATGAACAGGTTTCAAGTTGGAGTGG  
AGTTTGGGCAACACAAGGCTACAAGACACAACATTCTCCTTTGGTTACCACCTGACTCTGCCCCAGGC  
CAACATGGTATTTAGAGGCTTGGTGGATAGTAAGTGGTGTAGGTGCTGTGCTGGAGAAGAAGATGCC  
CCTCTGCCTGTACCCTAGCCCTTGGAGCCTTCTCAATCACTGGCGCAACAGATTCCATTGTGGCTTCA  
GCATCACTGTGGC

**ACGCGT**ACGCGGCCGCTCGAGCAGAACTCATCTCAGAAGAGGATCTGGCAGCAATGATATCCTGGATT  
ACAAGGATGACGACGATAAGGTTTAA



[View online »](#)

**Protein Sequence:** >RC204832 protein sequence  
Red=Cloning site Green=Tags(s)

MGNTLGLAPMGTLPRRSPRREEPLPNPGSFDELHRLCKDVFP AQMEGVKLVVNKVLSSHFQVAHTIHMSA  
 LGLPGYHLHAAYAGDWQLSPTEVFPTVVGMDSSGSLNAQVLLLLAERLRAKAVFQTQAKFLTWQFDGE  
 YRGDDYTATLTLGNPDLIGESVIMVAHFLQSLTHRLVLGGELVYHRRPGEEGAILTLAGKYSAVHWVATL  
 NVGSGGAHASYHRANEQVQVGVFEANTRLQDTTFSFGYHLTLPQANMVFRGLVDSNWCVGAVLEKKMP  
 PLPVTLLALGAFLNHWRNRFHCGFSITVG

TRTRPLEQKLISEEDLAANDILDYKDDDDKV

**Chromatograms:** [https://cdn.origene.com/chromatograms/mk6437\\_c07.zip](https://cdn.origene.com/chromatograms/mk6437_c07.zip)

**Restriction Sites:** SgfI-MluI

**Cloning Scheme:**



**ACCN:** NM\_032174

**ORF Size:** 924 bp

**OTI Disclaimer:** The molecular sequence of this clone aligns with the gene accession number as a point of reference only. However, individual transcript sequences of the same gene can differ through naturally occurring variations (e.g. polymorphisms), each with its own valid existence. This clone is substantially in agreement with the reference, but a complete review of all prevailing variants is recommended prior to use. [More info](#)

**OTI Annotation:** This clone was engineered to express the complete ORF with an expression tag. Expression varies depending on the nature of the gene.

**Components:** The ORF clone is ion-exchange column purified and shipped in a 2D barcoded Matrix tube containing 10ug of transfection-ready, dried plasmid DNA (reconstitute with 100 ul of water).

**Reconstitution Method:**

1. Centrifuge at 5,000xg for 5min.
2. Carefully open the tube and add 100ul of sterile water to dissolve the DNA.
3. Close the tube and incubate for 10 minutes at room temperature.
4. Briefly vortex the tube and then do a quick spin (less than 5000xg) to concentrate the liquid at the bottom.
5. Store the suspended plasmid at -20°C. The DNA is stable for at least one year from date of shipping when stored at -20°C.

**RefSeq:** [NM\\_032174.6](#)

**RefSeq Size:** 2927 bp

**RefSeq ORF:** 927 bp

**Locus ID:** 84134

**UniProt ID:** [Q969M1](#)

**Cytogenetics:** 1q23.3

**Domains:** Euk\_porin

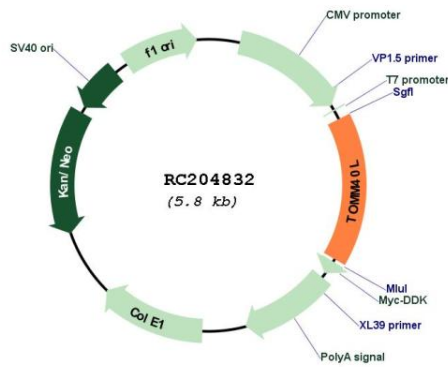
**Protein Families:** Druggable Genome, Ion Channels: Other

**Protein Pathways:** Amyotrophic lateral sclerosis (ALS)

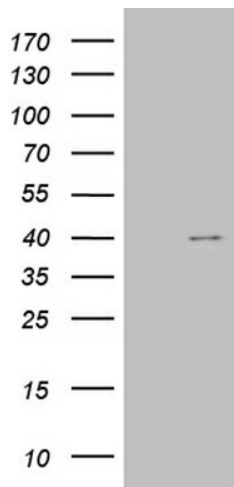
**MW:** 33.9 kDa

**Gene Summary:** Potential channel-forming protein implicated in import of protein precursors into mitochondria.[UniProtKB/Swiss-Prot Function]

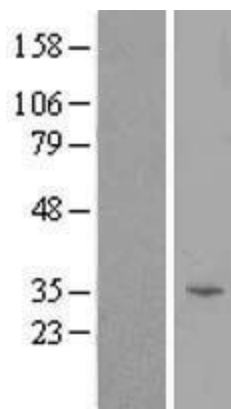
**Product images:**



Circular map for RC204832



HEK293T cells were transfected with the pCMV6-ENTRY control (Cat# [PS100001], Left lane) or pCMV6-ENTRY TOMM40L (Cat# RC204832, Right lane) cDNA for 48 hrs and lysed. Equivalent amounts of cell lysates (5 ug per lane) were separated by SDS-PAGE and immunoblotted with anti-TOMM40L (Cat# [TA810705])(1:500). Positive lysates [LY410301] (100ug) and [LC410301] (20ug) can be purchased separately from OriGene.



Western blot validation of overexpression lysate (Cat# [LY410301]) using anti-DDK antibody (Cat# [TA50011-100]). Left: Cell lysates from untransfected HEK293T cells; Right: Cell lysates from HEK293T cells transfected with RC204832 using transfection reagent MegaTran 2.0 (Cat# [TT210002]).