

## Product datasheet for **RC204804**

### **BAP31 (BCAP31) (NM\_005745) Human Tagged ORF Clone**

#### Product data:

Product Type:	Expression Plasmids
Product Name:	BAP31 (BCAP31) (NM_005745) Human Tagged ORF Clone
Tag:	Myc-DDK
Symbol:	BAP31
Synonyms:	6C6-AG; BAP31; CDM; DDCH; DXS1357E
Mammalian Cell Selection:	Neomycin
Vector:	pCMV6-Entry (PS100001)
E. coli Selection:	Kanamycin (25 ug/mL)
ORF Nucleotide Sequence:	>RC204804 ORF sequence Red=Cloning site Blue=ORF Green=Tags(s)

TTTTGTAATACGACTCACTATAGGGCGGCCGGAATTCGTCGACTGGATCCGGTACCGAGGAGATCTGCC  
GCC**CGATCGCC**

ATGAGTCTGCAGTGGACTGCAGTTGCCACCTTCCTCTATGCGGAGGTCTTTGTTGTGTTGCTTCTCTGCA  
TTCCCTTCATTTCTCCTAAAAGATGGCAGAAGATTTTCAAGTCCC GGCTGGTGGAGTTGTTAGTGCCTA  
TGGCAACACCTTCTTTGTGGTTCTCATTGTCATCCTTGTGCTGTTGGTCATCGATGCCGTGCGCAAATT  
CGGGAGTATGATGATGTGACGAAAAGGTGAACCTCCAGAACAATCCCGGGCCATGAGCACTTCCACA  
TGAAGCTTTTCCGTGCCAGAGGAATCTCTACATTGCTGGCTTTTCTTGCTGCTGCCTTCTGCTTAG  
ACGCCTGGTACTCTATTTTCGAGCAGGCCACGCTGCTGGCCTCCAATGAAGCCTTTAAAAAGCAGGCG  
GAGAGTGTAGTGGCGGCCAAGAAGTACATGGAGGAGAATGACCAGCTCAAGAAGGGAGCTGCTGTTG  
ACGGAGGCAAGTTGGATGTGGGAATGCTGAGGTGAAGTTGGAGGAAGAGAACAGGAGCCTGAAGGCTGA  
CCTGCAGAAGCTAAAGGACGAGCTGGCCAGCACTAAGCAAAAAGCTAGAGAAAAGCTGAAAACAGGTTCTG  
GCCATGCGGAAGCAGTCTGAGGGCCTACCAAGGAGTACGACCGTTGCTGGAGGAGCACGCAAAGCTGC  
AGGCTGCAGTAGATGGTCCCATGGACAAGAAGGAAGAG

**ACGCGT**ACGCGGCCGCTCGAGCAGAAACTCATCTCAGAAGAGGATCTGGCAGCAAATGATATCCTGGATT  
ACAAGGATGACGACGATAAGGTTTAA



[View online »](#)

**Protein Sequence:** >RC204804 protein sequence  
 Red=Cloning site Green=Tags(s)

MSLQWTAVATFLYAEV FV LLLCIPFISP KRWQKIFKSRLVELLVS YGNTFFVVLIVILVLLVIDAVREI  
 REYDDVTEKVN LQNNPGAMEHFHMKLFRAQRNLYIAGF SLLL SFLLRRLVTLISQQATLLASNEAFKKQA  
 ESASEAAKKYMEENDQLKKGA AVDGGKLDVGN AEVKLEEEENRSLKADLQ LKDELASTKQKLEKAENQVL  
 AMRKQSEGLTKEYDR LLEE HAKLQAAVDGPM DKKEE

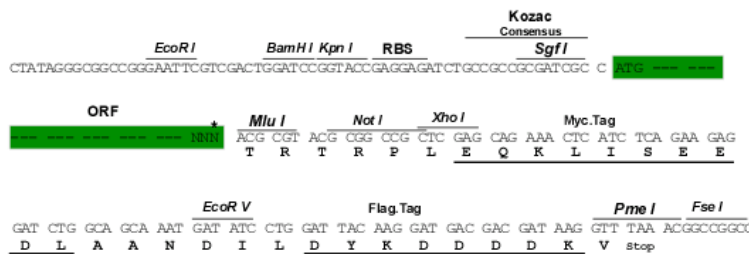
TRTRPLEQKLISEEDLAANDILDYKDDDDKV

**Chromatograms:** [https://cdn.origene.com/chromatograms/mk6171\\_g02.zip](https://cdn.origene.com/chromatograms/mk6171_g02.zip)

**Restriction Sites:** SgfI-MluI

**Cloning Scheme:**

Cloning sites used for ORF Shuttling:



\* The last codon before the Stop codon of the ORF

**ACCN:** NM\_005745

**ORF Size:** 738 bp

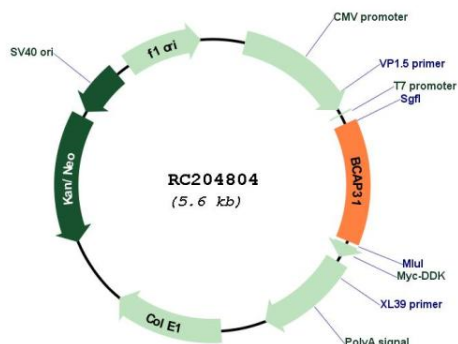
**OTI Disclaimer:** The molecular sequence of this clone aligns with the gene accession number as a point of reference only. However, individual transcript sequences of the same gene can differ through naturally occurring variations (e.g. polymorphisms), each with its own valid existence. This clone is substantially in agreement with the reference, but a complete review of all prevailing variants is recommended prior to use. [More info](#)

**OTI Annotation:** This clone was engineered to express the complete ORF with an expression tag. Expression varies depending on the nature of the gene.

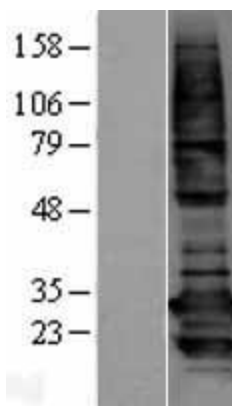
**Components:** The ORF clone is ion-exchange column purified and shipped in a 2D barcoded Matrix tube containing 10ug of transfection-ready, dried plasmid DNA (reconstitute with 100 ul of water).

<b>Reconstitution Method:</b>	<ol style="list-style-type: none"><li>1. Centrifuge at 5,000xg for 5min.</li><li>2. Carefully open the tube and add 100ul of sterile water to dissolve the DNA.</li><li>3. Close the tube and incubate for 10 minutes at room temperature.</li><li>4. Briefly vortex the tube and then do a quick spin (less than 5000xg) to concentrate the liquid at the bottom.</li><li>5. Store the suspended plasmid at -20°C. The DNA is stable for at least one year from date of shipping when stored at -20°C.</li></ol>
<b>Note:</b>	Plasmids are not sterile. For experiments where strict sterility is required, filtration with 0.22um filter is required.
<b>RefSeq:</b>	<a href="#">NM_005745.7</a>
<b>RefSeq Size:</b>	1417 bp
<b>RefSeq ORF:</b>	741 bp
<b>Locus ID:</b>	10134
<b>UniProt ID:</b>	<a href="#">P51572</a>
<b>Cytogenetics:</b>	Xq28
<b>Protein Families:</b>	Druggable Genome, Transmembrane
<b>MW:</b>	28 kDa
<b>Gene Summary:</b>	<p>This gene encodes a member of the B-cell receptor associated protein 31 superfamily. The encoded protein is a multi-pass transmembrane protein of the endoplasmic reticulum that is involved in the anterograde transport of membrane proteins from the endoplasmic reticulum to the Golgi and in caspase 8-mediated apoptosis. Microdeletions in this gene are associated with contiguous ABCD1/DXS1375E deletion syndrome (CADD5), a neonatal disorder. Alternative splicing of this gene results in multiple transcript variants. Two related pseudogenes have been identified on chromosome 16. [provided by RefSeq, Jan 2012]</p>

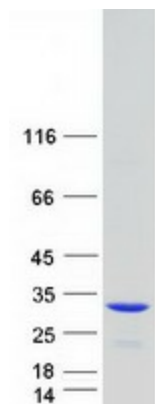
**Product images:**



Circular map for RC204804



Western blot validation of overexpression lysate (Cat# [LY427957]) using anti-DDK antibody (Cat# [TA50011-100]). Left: Cell lysates from untransfected HEK293T cells; Right: Cell lysates from HEK293T cells transfected with [RC226633] using transfection reagent MegaTran 2.0 (Cat# [TT210002]).



Coomassie blue staining of purified BCAP31 protein (Cat# [TP304804]). The protein was produced from HEK293T cells transfected with BCAP31 cDNA clone (Cat# RC204804) using MegaTran 2.0 (Cat# [TT210002]).