

Product datasheet for **RC204797**

ANKRD22 (NM_144590) Human Tagged ORF Clone

Product data:

Product Type: Expression Plasmids
Product Name: ANKRD22 (NM_144590) Human Tagged ORF Clone
Tag: Myc-DDK
Symbol: ANKRD22
Mammalian Cell Selection: Neomycin
Vector: pCMV6-Entry (PS100001)
E. coli Selection: Kanamycin (25 ug/mL)
ORF Nucleotide Sequence: >RC204797 ORF sequence
Red=Cloning site Blue=ORF Green=Tags(s)

TTTTGTAATACGACTCACTATAGGGCGGCCGGAATTCGTCGACTGGATCCGGTACCGAGGAGATCTGCC
GCC**CGATCGCC**

ATGGGAATCCTATACTCTGAGCCCATCTGCCAAGCAGCCTATCAGAATGACTTTGGACAAGTGTGGCGGT
GGGTGAAAGAAGACAGCAGCTATGCCAACGTTCAAGATGGCTTTAATGGAGACACGCCCTGATCTGTGC
TTGCAGGCGAGGGCATGTGAGAAATCGTTTCCTTCCTTTAAGAAGAAATGCTAATGTCAACCTCAAAAAC
CAGAAAGAGAGAACCTGCTTGCATCATGCTGTGAAGAAAAATTTACCTTCATTGATTACTACTAATTA
TCCTCTTAATGCCTGTTCTGCTTATTGGGTATTTCCCTCATGGTATCAAAGACAAAGCAGAATGAGGCTCT
TGTACGAATGCTACTTGTGCTGGTGTGCAAGTTAATGCTACAGATTGTTATGGCTGTACCGCATTACAT
TATGCCTGTGAAATGAAAAACCGTCTCTTATCCCTCTGCTCTTGGAAGCCCGTGCAGACCCCAATAA
AGAATAAGCATGGTGAGAGCTCACTGGATATTGCACGGAGATTAATAATTTCCAGATTGAATTAATGCT
AAGGAAAGCATTG

ACGGTACGCGGCCGCTCGAGCAGAACTCATCTCAGAAGAGGATCTGGCAGCAATGATATCCTGGATT
ACAAGGATGACGACGATAAGGTTTAA

Protein Sequence: >RC204797 protein sequence
Red=Cloning site Green=Tags(s)

MGILYSEPICQAAYQNDFGQVWRWVKEDSSYANVQDGFNGDTPLICACRRGHVRIVSFLLRRNANVNLKN
QKERTCLHHAVKKKFTFIDYLLIILLMPVLLIGYFLMVSHTKQNEALVRMLLDAGVEVNATDCYGTALH
YACEMKNQSLIPLLEARADPTIKNKHGESSLDIARRLKFQIELMLRKAL

TRTRPLEQKLISEEDLAANDILDYKDDDDKV

Chromatograms: https://cdn.origene.com/chromatograms/mk6580_a05.zip



[View online »](#)

Restriction Sites: SgfI-MluI

Cloning Scheme:



ACCN: NM_144590

ORF Size: 573 bp

OTI Disclaimer: Due to the inherent nature of this plasmid, standard methods to replicate additional amounts of DNA in E. coli are highly likely to result in mutations and/or rearrangements. Therefore, OriGene does not guarantee the capability to replicate this plasmid DNA. Additional amounts of DNA can be purchased from OriGene with batch-specific, full-sequence verification at a reduced cost. Please contact our customer care team at custsupport@origene.com or by calling 301.340.3188 option 3 for pricing and delivery.

The molecular sequence of this clone aligns with the gene accession number as a point of reference only. However, individual transcript sequences of the same gene can differ through naturally occurring variations (e.g. polymorphisms), each with its own valid existence. This clone is substantially in agreement with the reference, but a complete review of all prevailing variants is recommended prior to use. [More info](#)

OTI Annotation: This clone was engineered to express the complete ORF with an expression tag. Expression varies depending on the nature of the gene.

Components: The ORF clone is ion-exchange column purified and shipped in a 2D barcoded Matrix tube containing 10ug of transfection-ready, dried plasmid DNA (reconstitute with 100 ul of water).

Reconstitution Method:

1. Centrifuge at 5,000xg for 5min.
2. Carefully open the tube and add 100ul of sterile water to dissolve the DNA.
3. Close the tube and incubate for 10 minutes at room temperature.
4. Briefly vortex the tube and then do a quick spin (less than 5000xg) to concentrate the liquid at the bottom.
5. Store the suspended plasmid at -20°C. The DNA is stable for at least one year from date of shipping when stored at -20°C.

Note: Plasmids are not sterile. For experiments where strict sterility is required, filtration with 0.22um filter is required.

RefSeq: [NM_144590.1](#), [NP_653191.1](#)

RefSeq Size: 3993 bp

RefSeq ORF: 576 bp

Locus ID: 118932

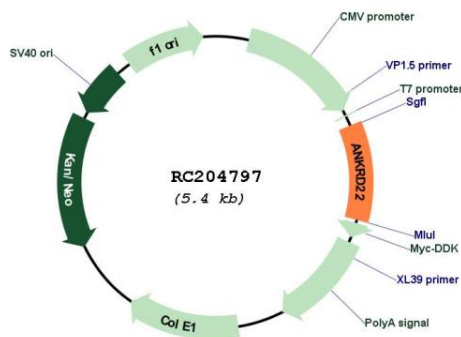
UniProt ID: [Q5VYY1](#)

Cytogenetics: 10q23.31

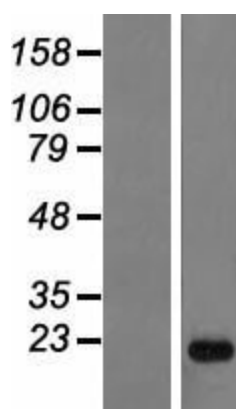
Protein Families: Transmembrane

MW: 21.8 kDa

Product images:



Circular map for RC204797



Western blot validation of overexpression lysate (Cat# [LY408264]) using anti-DDK antibody (Cat# [TA50011-100]). Left: Cell lysates from untransfected HEK293T cells; Right: Cell lysates from HEK293T cells transfected with RC204797 using transfection reagent MegaTran 2.0 (Cat# [TT210002]).