

Product datasheet for **RC204793**

PLAC1 (NM_021796) Human Tagged ORF Clone

Product data:

Product Type:	Expression Plasmids
Product Name:	PLAC1 (NM_021796) Human Tagged ORF Clone
Tag:	Myc-DDK
Symbol:	PLAC1
Synonyms:	CT92; OOSP2B; OOSP2L
Mammalian Cell Selection:	Neomycin
Vector:	pCMV6-Entry (PS100001)
E. coli Selection:	Kanamycin (25 ug/mL)
ORF Nucleotide Sequence:	>RC204793 representing NM_021796 Red=Cloning site Blue=ORF Green=Tags(s)

TTTTGTAATACGACTCACTATAGGGCGCCGGAATTCGTCGACTGGATCCGGTACCGAGGAGATCTGCC
GCC**CGATCGCC**

ATGAAAGTTTTTAAGTTCATAGGACTGATGATCCTCCTCACCTCTGCGTTTTTCAGCCGGTTCAGGACAAA
GTCCAATGACTGTGCTGTGCTCCATAGACTGGTTCATGGTCACAGTGCACCCCTTCATGCTAAACAACGA
TGTGTGTGTACACTTTCATGAACACTACCTGGGCCTGGGTGCCCCCAAACCATGTTTCAGCCACACGCC
TACCAGTTCACCTACCGTGTACTGAATGTGGCATCAGGGCCAAAGCTGTCTCTCAGGACATGGTTATCT
ACAGCACTGAGATACACTACTCTTCTAAGGGCACGCCATCTAAGTTTGTGATCCCAGTGTGATGTGCTGC
CCCCAAAAGTCCCATGGCTCACCAAGCCCTGCTCCATGAGAGTAGCCAGCAAGAGCAGGGCCACAGCC
CAGAAGGATGAGAAATGCTACGAGGTGTTGAGCTTGTGTCACAGTCCAGTCAAGGGCCAACTGCGATTGTC
CACCTTGTGCTTTCAGTGAAGAAGAGCATACCCAGGTCCTTGTGTCACCAAGCAGGGGCTCAGGAGGCTCA
ACCTCTGCAGCCATCTCACTTTCTTGATATTTCTGAGGATTGGTCTCTTCACACAGATGATATGATTGGG
TCCATG

ACGCGTACGCGGGCCGCTCGAGCAGAACTCATCTCAGAAGAGGATCTGGCAGCAAATGATATCCTGGATT
ACAAGGATGACGACGATAAGGTTTAA



[View online »](#)

Reconstitution Method:

1. Centrifuge at 5,000xg for 5min.
2. Carefully open the tube and add 100ul of sterile water to dissolve the DNA.
3. Close the tube and incubate for 10 minutes at room temperature.
4. Briefly vortex the tube and then do a quick spin (less than 5000xg) to concentrate the liquid at the bottom.
5. Store the suspended plasmid at -20°C. The DNA is stable for at least one year from date of shipping when stored at -20°C.

RefSeq: [NM_021796.4](#)

RefSeq Size: 1126 bp

RefSeq ORF: 639 bp

Locus ID: 10761

UniProt ID: [Q9HBJ0](#)

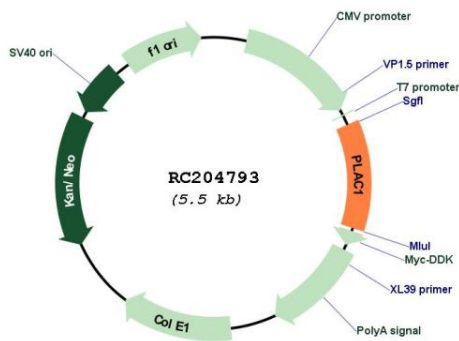
Cytogenetics: Xq26.3

Protein Families: Secreted Protein

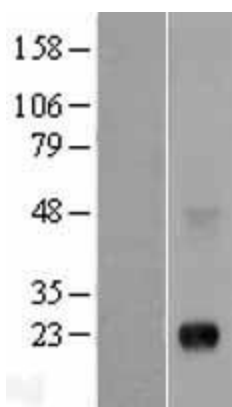
MW: 23.4 kDa

Gene Summary: May play a role in placental development.[UniProtKB/Swiss-Prot Function]

Product images:



Circular map for RC204793



Western blot validation of overexpression lysate (Cat# [LY402875]) using anti-DDK antibody (Cat# [TA50011-100]). Left: Cell lysates from untransfected HEK293T cells; Right: Cell lysates from HEK293T cells transfected with RC204793 using transfection reagent MegaTran 2.0 (Cat# [TT210002]).



Coomassie blue staining of purified PLAC1 protein (Cat# [TP304793]). The protein was produced from HEK293T cells transfected with PLAC1 cDNA clone (Cat# RC204793) using MegaTran 2.0 (Cat# [TT210002]).