

Product datasheet for **RC204791**

RBPJK (RBPJ) (NM_203283) Human Tagged ORF Clone

Product data:

Product Type:	Expression Plasmids
Product Name:	RBPJK (RBPJ) (NM_203283) Human Tagged ORF Clone
Tag:	Myc-DDK
Symbol:	RBPJK
Synonyms:	AOS3; CBF-1; CBF1; csl; IGKJRB; IGKJRB1; KBF2; RBP-J; RBP-JK; RBP-J kappa; RBPJK; RBPSUH; SUH
Mammalian Cell Selection:	Neomycin
Vector:	pCMV6-Entry (PS100001)
E. coli Selection:	Kanamycin (25 ug/mL)



[View online »](#)

ORF Nucleotide Sequence:

>RC204791 ORF sequence
 Red=Cloning site Blue=ORF Green=Tags(s)

TTTTGTAATACGACTCACTATAGGGCGGCCGGGAATTCGTCGACTGGATCCGGTACCGAGGAGATCTGCC
 GCC**CGCATCGCC**

ATGGGGGGCTGCAGGAAATTTGGTGAGCGGCCCTCCACCTAAACGACTTACTAGGGAAGCTATGCGAAATT
 ATTTAAAAGAGCGAGGGGATCAAACAGTACTTATTCTTCATGCAAAAAGTTGCACAGAAGTCAATATGGAAA
 TGAAAAAAGTTTTTTGGCCACCTCCTTGTGTATATCTTATGGGCGAGCGGATGGAAGAAAAAAGAA
 CAAATGGAACGCGATGGTTGTTCTGAACAAGAGTCTCAACCGTGTGCATTTATTGGGATAGGAAATAGTG
 ACCAAGAAATGCAGCAGCTAAACTTGAAGGAAAGAACTATTGCACAGCCAAAACATTGTATATATCTGA
 CTCAGACAAGCGAAAGCACTTCATGTTGTCTGTAAGATGTTCTATGGCAACAGTGATGACATTGGTGTG
 TTCCTCAGCAAGCGGATAAAAAGTCATCTCAAACCTTCCAAAAAGAAGCAGTCATTGAAAAATGCTGACT
 TATGCATTGCCTCAGGAACAAAGGTGGCTCTGTTAATCGACTACGATCCAGACAGTTAGTACCAGATA
 CTTGCATGTAGAAGGAGTAATTTTCATGCCAGTTCACAGCAGTGGGAGCCTTTTTTATTCATCTCTTG
 GATGATGATGAATCAGAAGGAGAAGAATTCACAGTCCGAGATGGCTACATCCATTATGGACAACAGTCA
 AACTTGTGTGCTCAGTTACTGGCATGGCACTCCCAAGATTGATAATTAGGAAAGTTGATAAGCAGACCGC
 ATTATTGGATGCAGATGATCCTGTGTCACTCAACTCCATAAATGTGCATTTTACCTTAAGGATACAGAAAGA
 ATGTATTTGTGCCTTTCTCAAGAAAGAATAATTCATTTCAAGCCACTCCATGTCCAAAAGAACCAATA
 AAGAGATGATAAATGATGGCGCTTCTGGACAATCATTAGCACAGATAAGGCAGAGTATACATTTTATGA
 GGAATGGGCCCTGTCTTGGCCAGTCACTCCTGTGCCTGTGGTAGAGAGCCTTCAGTTGAATGGCGGT
 GGGGACGTAGCAATGCTTGAACCTACAGGACAGAATTTCACTCCAATTTACGAGTGTGGTTGGGGATG
 TAGAAGCTGAAACTATGTACAGGTGTGGAGAGTATGCTCTGTGTCTCCAGACATTTCTGCATTCGG
 AGAAGGTTGGAGATGGGTCCGGCAACCAGTCCAGGTTCCAGTAACTTTGGTCCGAAATGATGGAATCATT
 TATCCACCAGCCTTACCTTTACCTACACACCAGAACCAGGGCCGCGCCACATTGCAGTGCAGCAGGAG
 CAATCCTTCGAGCCAATTCAGCCAGGTGCCCCCTAACGAATCAAACACAAAACAGCGAGGGAAGTTACAC
 AAACGCCAGCACAAATTCACCAGTGTACATCATCTACAGCCACAGTGGTATCC

ACGCGTACGCGGCCGCTCGAGCAGAAACTCATCTCAGAAGAGGATCTGGCAGCAATGATATCCTGGATT
 ACAAGGATGACGACGATAAGGTTTAA

Protein Sequence:

>RC204791 protein sequence
 Red=Cloning site Green=Tags(s)

MGGCRKFGERPPPKRLTREAMRNYLKERGDQTVLILHAKVAQKSYGNEKRFFCPPPCVYLMGSGWKKKKE
 QMERDGCSEQESQPCAFIGIGNSDQEMQLNLEGKNYCTAKTLYISDSDKRKHFM SVKMFYGNSSDDIGV
 FLSKRIKVISKPSKKKQSLKNADLCIASGTKVALFNRLRSQTVSTRYLHVEGGNFHASSQQWGAFFIHL
 DDDESEGEFTVRDGYIHYGQTVKLVCSVTGMALPRLIIRKVDKQTALLDADDPVSQLHKCAFYLKDER
 MYLCLSQERIIQFQATPCPKENKEMINDGASWTIISTDKAEYTFYEGMGPVLPVTPVPVVEVSLQLNGG
 GDVAMLEL TGQNF TPNLRVWFGDVEAETMYRCGESMLCVVPDISAFREGWRWVRQPVQVPVTLVRNDGII
 YSTSLTFYTPPEPGRPHCSAAGAILRANSSQVPPNESNTNSEGSYTNASTNSTSVTSSTATVVS

TRTRPLEQKLISEEDLAANDILDYKDDDDKV

Chromatograms:

https://cdn.origene.com/chromatograms/mk6671_c06.zip

Restriction Sites:

Sgfl-Mlul

Cloning Scheme:


ACCN: NM_203283

ORF Size: 1455 bp

OTI Disclaimer: The molecular sequence of this clone aligns with the gene accession number as a point of reference only. However, individual transcript sequences of the same gene can differ through naturally occurring variations (e.g. polymorphisms), each with its own valid existence. This clone is substantially in agreement with the reference, but a complete review of all prevailing variants is recommended prior to use. [More info](#)

OTI Annotation: This clone was engineered to express the complete ORF with an expression tag. Expression varies depending on the nature of the gene.

Components: The ORF clone is ion-exchange column purified and shipped in a 2D barcoded Matrix tube containing 10ug of transfection-ready, dried plasmid DNA (reconstitute with 100 ul of water).

- Reconstitution Method:**
1. Centrifuge at 5,000xg for 5min.
 2. Carefully open the tube and add 100ul of sterile water to dissolve the DNA.
 3. Close the tube and incubate for 10 minutes at room temperature.
 4. Briefly vortex the tube and then do a quick spin (less than 5000xg) to concentrate the liquid at the bottom.
 5. Store the suspended plasmid at -20°C. The DNA is stable for at least one year from date of shipping when stored at -20°C.

RefSeq: [NM_203283.4](#)

RefSeq Size: 5762 bp

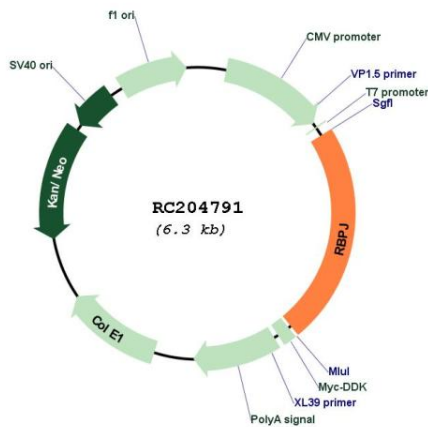
RefSeq ORF: 1398 bp

Locus ID: 3516

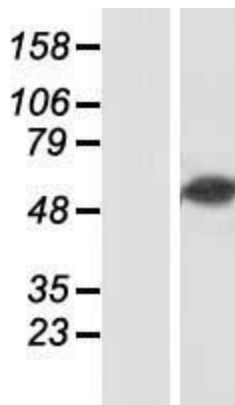
UniProt ID: [Q06330](#)

Cytogenetics: 4p15.2
Protein Families: Transcription Factors
Protein Pathways: Notch signaling pathway
MW: 54.1 kDa
Gene Summary: The protein encoded by this gene is a transcriptional regulator important in the Notch signaling pathway. The encoded protein acts as a repressor when not bound to Notch proteins and an activator when bound to Notch proteins. It is thought to function by recruiting chromatin remodeling complexes containing histone deacetylase or histone acetylase proteins to Notch signaling pathway genes. Several transcript variants encoding different isoforms have been found for this gene, and several pseudogenes of this gene exist on chromosome 9. [provided by RefSeq, Oct 2013]

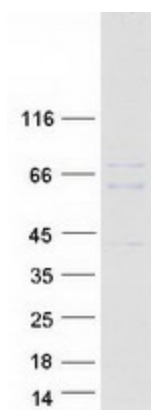
Product images:



Circular map for RC204791



Western blot validation of overexpression lysate (Cat# [LY404367]) using anti-DDK antibody (Cat# [TA50011-100]). Left: Cell lysates from untransfected HEK293T cells; Right: Cell lysates from HEK293T cells transfected with RC204791 using transfection reagent MegaTran 2.0 (Cat# [TT210002]).



Coomassie blue staining of purified RBPJ protein (Cat# [TP304791]). The protein was produced from HEK293T cells transfected with RBPJ cDNA clone (Cat# RC204791) using MegaTran 2.0 (Cat# [TT210002]).