

Product datasheet for **RC204782**

ARHGAP15 (NM_018460) Human Tagged ORF Clone

Product data:

Product Type:	Expression Plasmids
Product Name:	ARHGAP15 (NM_018460) Human Tagged ORF Clone
Tag:	Myc-DDK
Symbol:	ARHGAP15
Synonyms:	BM046
Mammalian Cell Selection:	Neomycin
Vector:	pCMV6-Entry (PS100001)
E. coli Selection:	Kanamycin (25 ug/mL)



[View online »](#)

ORF Nucleotide Sequence:

>RC204782 ORF sequence
 Red=Cloning site Blue=ORF Green=Tags(s)

TTTTGTAATACGACTCACTATAGGGCGGCCGGAATTCGTCGACTGGATCCGGTACCGAGGAGATCTGCC
 GCC**GCGATCGCC**

ATGCAGAAATCTACAAATCTGATACTTCGGTGGAAACACTGAATTCTACCCGCCAAGGCACAGGAGCTG
 TGCAAATGAGAATCAAAAATGCCAACAGCCACCATGACAGGCTCAGCCAAAGTAAATCCATGATCCTCAC
 CGATGTCGGGAAGGTCACTGAACCTATATCCAGACACAGAAAGGAATCATTACAGCATATCTTGAAAGAT
 GTCATTCTCCATTGGAACAACCTGATGGTTGAAAAAGAAGTTATCTGCAAAAAGCTAAAATTGCAGATG
 GAGGAAAGAACTAAGGAAAACTGGTCTACTTCTGGATTGTTCTTTCTAGTCGAAGAATTGAATTTTA
 CAAAGAATCCAAGCAACAGGCTCTGTCCAATATGAAAACCTGGGCACAAACCAGAAAGTGTGGATTGTGT
 GGAGCACACATTGAATGGCCAAGGAAAAATCGAGCAGAAAGAATGTCTTTCAGATCACACAGTATCAG
 GAAATGAGTTCCTTCTACAGTCAGATATTGACTTCATCATATTGGATTGGTTCACGCTATCAAAAATGC
 AATTGACAGATTGCCAAAGGATTCAAGTTGTCCATCAAGAAACCTGGAATTATTCAAAATCCAAGATCC
 TCTAGCACTGAATTGCTAAGTCACTACGACAGTATATAAAAAGAACAGAAACCAGAGCACAGAAAATCTT
 TAATGTTCACTGCATCACAGTCTCCGATACAAGCGCAAAAATCGAGTTAAAAGCAGATTAAGAA
 GTTTATTACCCGAAGACCTTCCCTGAAAACCTGCAAGAAAAAGGACTTATTAAGATCAAAATTTTGGC
 TCTCATCTGCACAAAGTGTGTGAACGTGAAAATCCACAGTTCGGTGGTTGTAAGCAATGCATTGAAG
 CTGTTGAGAAAAGAGGTCTAGATGTTGATGGAATATATCGAGTTAGTGGCAATCTGGCAACAATACAGAA
 GTTAAGATTTATTGTCAACCAAGAAGAGAAGCTGAATTTGGACGACAGCCAGTGGGAGGACATCCACGTT
 GTCACCGGAGCACTGAAGATGTTTTCCGGGAGCTGCCTGAGCCGCTCTCCCTTACAGTTCTTTGAGC
 AGTTTGTGGAAGCGATCAAAAAGCAAGACAACAACAAGAATTGAAGCTGTAATAATCTCTGTACAAAA
 ACTCCCTCCGCCAAATCGTGACACCATGAAAGTCCCCTTTGGACATCTAACTAAGATAGTGGCCAAAGCC
 TCCAAGAACCTCATGTCCACGCAAGCTTGGGATTGTATTTGGACCTACCCTTCTGCGAGCTGAAAATG
 AAACAGGAAACATGGCGATCCACATGGTCTACCAGAACCAGATAGCTGAGCTCATGCTGAGTGAGTACAG
 TAAGATCTTCGGCTCAGAGGAAGAC

ACGCGTACGCGGCCGCTCGAGCAGAAACTCATCTCAGAAGAGGATCTGGCAGCAAATGATATCCTGGATT
 ACAAGGATGACGACGATAAGGTTTAA

Protein Sequence:

>RC204782 protein sequence
 Red=Cloning site Green=Tags(s)

MQKSTNSDTSVETLNSTRQGTGAVQMRIKNANSHHDLRSQSKSMILTDVGKVTEPISRHRNHSQHILKD
 VIPPLEQLMVEKEGYLQAKIADGGKLRKNWSTSWIVLSSRRIEFYKESKQQALSNMKTGHKPESVDLC
 GAHIEWAKEKSSRNKVFQITTVSGNEFLLQSDIDFIILDWFHAIKNAIDRLPKDSSCPSRNLELFKIQRS
 SSTELLSHYDSDIKEQKPEHRKSLMFRLLHHSASDTSKNNRVKSRLKFFITRRPSLKTLEKGLIKDQIFG
 SHLHKVCERENSTVPWFVKQCI EAVEKRLDVDGIYRVSGNLATIQLRFIVNQEELNLDSDQWEDIHV
 VTGALKMFFRELPEPLFPYSFFEQFVEAIKKQDNNTRIEAVKSLVQKLPPNDRDTPKVPFGLTKIVAKA
 SKNLMSTQSLGIVFGPTLLRAENETGNMAIHMVYQNQIAELMLSEYSKIFGSEED

TRTRPLEQKLISEEDLAANDILDYKDDDDKV

Chromatograms:

https://cdn.origene.com/chromatograms/mk6550_f06.zip

Restriction Sites:

Sgfl-Mlul

Cloning Scheme:

Cloning sites used for ORF Shutting:



* The last codon before the Stop codon of the ORF

ACCN: NM_018460

ORF Size: 1425 bp

OTI Disclaimer: The molecular sequence of this clone aligns with the gene accession number as a point of reference only. However, individual transcript sequences of the same gene can differ through naturally occurring variations (e.g. polymorphisms), each with its own valid existence. This clone is substantially in agreement with the reference, but a complete review of all prevailing variants is recommended prior to use. [More info](#)

OTI Annotation: This clone was engineered to express the complete ORF with an expression tag. Expression varies depending on the nature of the gene.

Components: The ORF clone is ion-exchange column purified and shipped in a 2D barcoded Matrix tube containing 10ug of transfection-ready, dried plasmid DNA (reconstitute with 100 ul of water).

Reconstitution Method:

1. Centrifuge at 5,000xg for 5min.
2. Carefully open the tube and add 100ul of sterile water to dissolve the DNA.
3. Close the tube and incubate for 10 minutes at room temperature.
4. Briefly vortex the tube and then do a quick spin (less than 5000xg) to concentrate the liquid at the bottom.
5. Store the suspended plasmid at -20°C. The DNA is stable for at least one year from date of shipping when stored at -20°C.

RefSeq: [NM_018460.4](#)
RefSeq Size: 1774 bp

RefSeq ORF: 1428 bp

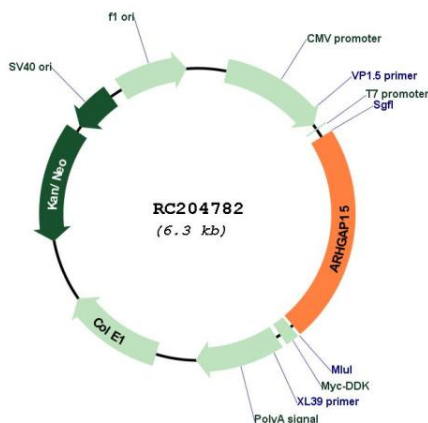
Locus ID: 55843

UniProt ID: [Q53QZ3](#)
Cytogenetics: 2q22.2-q22.3

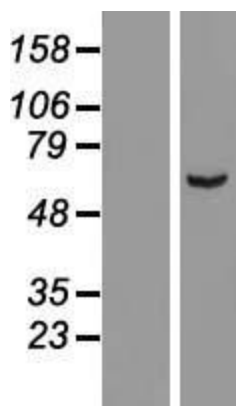
MW: 54.5 kDa

Gene Summary: RHO GTPases (see ARHA; MIM 165390) regulate diverse biologic processes, and their activity is regulated by RHO GTPase-activating proteins (GAPs), such as ARHGAP15 (Seoh et al., 2003 [PubMed 12650940]).[supplied by OMIM, Mar 2008]

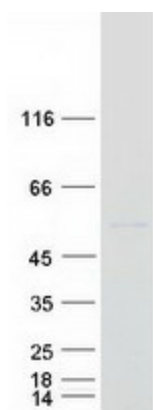
Product images:



Circular map for RC204782



Western blot validation of overexpression lysate (Cat# [LY413038]) using anti-DDK antibody (Cat# [TA50011-100]). Left: Cell lysates from untransfected HEK293T cells; Right: Cell lysates from HEK293T cells transfected with RC204782 using transfection reagent MegaTran 2.0 (Cat# [TT210002]).



Coomassie blue staining of purified ARHGAP15 protein (Cat# [TP304782]). The protein was produced from HEK293T cells transfected with ARHGAP15 cDNA clone (Cat# RC204782) using MegaTran 2.0 (Cat# [TT210002]).