

Product datasheet for RC204779

CHMP5 (NM_016410) Human Tagged ORF Clone

Product data:

Product Type:	Expression Plasmids
Product Name:	CHMP5 (NM_016410) Human Tagged ORF Clone
Tag:	Myc-DDK
Symbol:	CHMP5
Synonyms:	C9orf83; CGI-34; HSPC177; PNAS-2; SNF7DC2; Vps60
Mammalian Cell Selection:	Neomycin
Vector:	pCMV6-Entry (PS100001)
E. coli Selection:	Kanamycin (25 ug/mL)
ORF Nucleotide Sequence:	>RC204779 ORF sequence Red=Cloning site Blue=ORF Green=Tags(s)

TTTTGTAATACGACTCACTATAGGGCGCCGGGAATTCGTCGACTGGATCCGGTACCGAGGAGATCTGCC
GCC**CGATCGC**C

ATGAACCGACTCTTCGGGAAAGCGAAACCCAAGGCTCCGCCGCCAGCCTGACTGGCTGCATTGGCACGG
TGGACAGTAGAGCAGAATCCATTGACAAGAAGATTTCTCGATTGGATGCTGAGCTAGTGAAGTATAAGGA
TCAGATCAAGAAGATGAGAGAGGGTCTGCAAAGAATATGGTCAAGCAGAAAGCCTTGCGAGTTTTAAAG
CAAAGAGGATGTATGAGCAGCAGCGGACAATCTTGCCAACAGTCATTCAACATGGAACAAGCCAATT
ATACCATCCAGTCTTTGAAGGACACCAAGACCACGGTTGATGCTATGAACTGGGAGTAAAGGAAATGAA
GAAGGCATACAAGCAAGTGAAGATCGACCAGATTGAGGATTTACAAGACCAGCTAGAGGATATGATGGAA
GATGCAAATGAAATCCAAGAAGCACTGAGTCGCAGTTATGGCACCCAGAACTGGATGAAGATGATTTAG
AAGCAGAGTTGGATGCACTAGGTGATGAGCTTCTGGCTGATGAAGACAGTTCTTATTTGGATGAGGCAGC
ATCTGCACCTGCAATCCAGAAGGTGTTCCCACTGATACAAAAACAAGGATGGAGTTCTGGTGGATGAA
TTTGGATTGCCACAGATCCCTGCTTCA

ACGCGTACGCGGCGCTCGAGCAGAAACTCATCTCAGAAGAGGATCTGGCAGCAAATGATATCTGGATT
ACAAGGATGACGACGATAAGGTTTAA



[View online »](#)

Protein Sequence: >RC204779 protein sequence
Red=Cloning site Green=Tags(s)

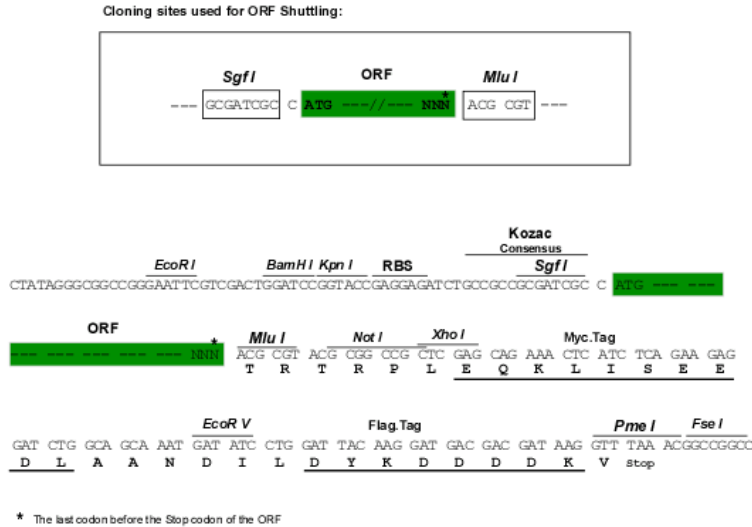
MNRLF GKAKPKAPPSL TGCIGTVDSRAESIDKKISR LDAELVKYKDQIKKMREGPAKNMVKQKALRVLK
 QKRMYEQQRDNL AQQSFNMEQANYTIQSLKDTKTTVDAMKLGVKEMKAYKQVKIDQIEDLQDQLEDMMME
 DANEIQEALSR SYGTPELDEDDLEAELDALGDELLADESSYLDEAASAPAIPEGVPTDTKNKDGLVLDVE
 FGLPQIPAS

TRTRPLEQKLISEEDLAANDILDYKDDDDKV

Chromatograms: https://cdn.origene.com/chromatograms/mk6061_f05.zip

Restriction Sites: SgfI-MluI

Cloning Scheme:



ACCN: NM_016410

ORF Size: 657 bp

OTI Disclaimer: The molecular sequence of this clone aligns with the gene accession number as a point of reference only. However, individual transcript sequences of the same gene can differ through naturally occurring variations (e.g. polymorphisms), each with its own valid existence. This clone is substantially in agreement with the reference, but a complete review of all prevailing variants is recommended prior to use. [More info](#)

OTI Annotation: This clone was engineered to express the complete ORF with an expression tag. Expression varies depending on the nature of the gene.

Components: The ORF clone is ion-exchange column purified and shipped in a 2D barcoded Matrix tube containing 10ug of transfection-ready, dried plasmid DNA (reconstitute with 100 ul of water).

Reconstitution Method:

1. Centrifuge at 5,000xg for 5min.
2. Carefully open the tube and add 100ul of sterile water to dissolve the DNA.
3. Close the tube and incubate for 10 minutes at room temperature.
4. Briefly vortex the tube and then do a quick spin (less than 5000xg) to concentrate the liquid at the bottom.
5. Store the suspended plasmid at -20°C. The DNA is stable for at least one year from date of shipping when stored at -20°C.

RefSeq: [NM_016410.3](#)

RefSeq Size: 2070 bp

RefSeq ORF: 660 bp

Locus ID: 51510

UniProt ID: [Q9NZZ3](#)

Cytogenetics: 9p13.3

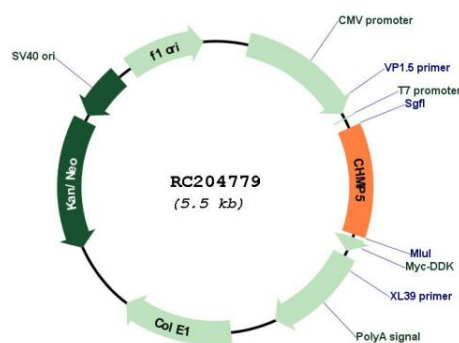
Domains: DUF279

Protein Pathways: Endocytosis

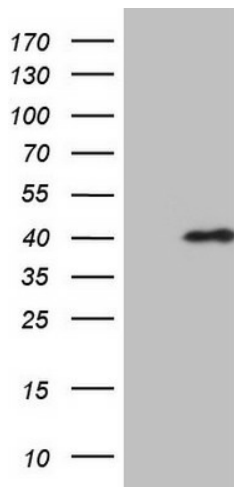
MW: 24.5 kDa

Gene Summary: CHMP5 belongs to the chromatin-modifying protein/charged multivesicular body protein (CHMP) family. These proteins are components of ESCRT-III (endosomal sorting complex required for transport III), a complex involved in degradation of surface receptor proteins and formation of endocytic multivesicular bodies (MVBs). Some CHMPs have both nuclear and cytoplasmic/vesicular distributions, and one such CHMP, CHMP1A (MIM 164010), is required for both MVB formation and regulation of cell cycle progression (Tsang et al., 2006 [PubMed 16730941]).[supplied by OMIM, Mar 2008]

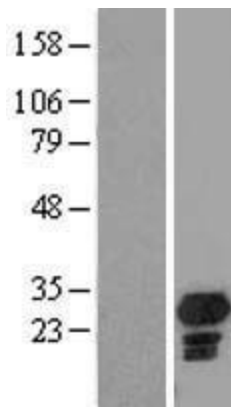
Product images:



Circular map for RC204779



HEK293T cells were transfected with the pCMV6-ENTRY control (Cat# [PS100001], Left lane) or pCMV6-ENTRY CHMP5 (Cat# RC204779, Right lane) cDNA for 48 hrs and lysed. Equivalent amounts of cell lysates (5 ug per lane) were separated by SDS-PAGE and immunoblotted with anti-CHMP5 (Cat# [TA808523])(1:2000). Positive lysates [LY414005] (100ug) and [LC414005] (20ug) can be purchased separately from OriGene.



Western blot validation of overexpression lysate (Cat# [LY414005]) using anti-DDK antibody (Cat# [TA50011-100]). Left: Cell lysates from untransfected HEK293T cells; Right: Cell lysates from HEK293T cells transfected with RC204779 using transfection reagent MegaTran 2.0 (Cat# [TT210002]).