

Product datasheet for **RC204775**

CLTRN (NM_020665) Human Tagged ORF Clone

Product data:

Product Type:	Expression Plasmids
Product Name:	CLTRN (NM_020665) Human Tagged ORF Clone
Tag:	Myc-DDK
Symbol:	CLTRN
Synonyms:	NX-17; NX17; TMEM27
Mammalian Cell Selection:	Neomycin
Vector:	pCMV6-Entry (PS100001)
E. coli Selection:	Kanamycin (25 ug/mL)
ORF Nucleotide Sequence:	>RC204775 ORF sequence Red=Cloning site Blue=ORF Green=Tags(s)

TTTTGTAATACGACTCACTATAGGGCGGCCGGAATTCGTCGACTGGATCCGGTACCGAGGAGATCTGCC
GCC**CGATCGCC**

ATGTTGGGCTGCTCTTTTTCTGGTGACTGCCATTCATGCTGAACTCTGTCAACCAGGTGCAGAAAATG
CTTTTAAAGTGAGACTTAGTATCAGAACAGCTCTGGGAGATAAAGCATATGCCTGGGATACCAATGAAGA
ATACCTCTCAAAGCGATGGTAGCTTTCTCCATGAGAAAAGTTCCCAACAGAGAAGCAACAGAAATTTCC
CATGTCCTACTTTGCAATGTAACCCAGAGGGTATCATTCTGGTTTGTGGTTACAGACCCTTCAAAAAATC
ACACCCTTCTGCTGTTGAGGTGCAATCAGCCATAAGAATGAACAAGAACCGGATCAACAATGCCTTCTT
TCTAAATGACCAAATCTGGAATTTTTAAAAATCCCTTCCACACTGCACCACCCATGGACCCATCTGTG
CCCATCTGGATTATTATTTGGTGTGATATTTGCATCATCATAGTTGCAATTGCACTACTGATTTTAT
CAGGGATCTGGCAACGTAGAAGAAAGAACAAGAACCATCTGAAGTGGATGACGCTGAAGATAAGTGTGA
AAACATGATCACAATTGAAAATGGCATCCCCTCTGATCCCCTGGACATGAAGGGAGGGCATATTAATGAT
GCCTTCATGACAGAGGATGAGAGGCTCACCCCTCTC

ACGCGTACGCGGCCGCTCGAGCAGAAACTCATCTCAGAAGAGGATCTGGCAGCAAATGATATCTGGATT
ACAAGGATGACGACGATAAGGTTTAA



[View online »](#)

Protein Sequence: >RC204775 protein sequence
 Red=Cloning site Green=Tags(s)

MLWLLFFLVTAIHAELCQPGAENAFKVRLSIRTALGDKAYAWDTNEEYLFKAMVAFSMRKVPNREATEIS
 HVLLCNVTQRVSFWFVVDPSKNHTLPAVEVQSAIRMNKNRINNAFFLNDQTLEFLKIPSTLAPPMDSV
 PIWIIIFGVIFCIIIVAIALLILSGIWQRRRNKKEPSEVDDAEDKCENMITIENGIPSDPLDMKGGHIND
 AFMTEDERLTPL

TRTRPLEQKLISEEDLAANDILDYKDDDDKV

Chromatograms: https://cdn.origene.com/chromatograms/mk6421_e05.zip

Restriction Sites: SgfI-MluI

Cloning Scheme:



ACCN: NM_020665

ORF Size: 666 bp

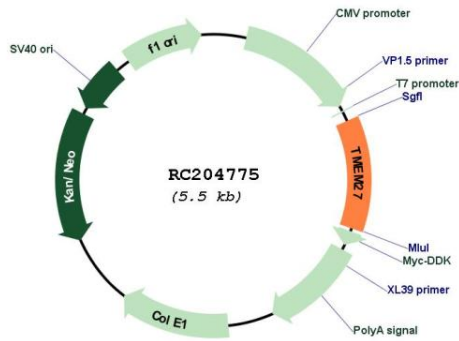
OTI Disclaimer: The molecular sequence of this clone aligns with the gene accession number as a point of reference only. However, individual transcript sequences of the same gene can differ through naturally occurring variations (e.g. polymorphisms), each with its own valid existence. This clone is substantially in agreement with the reference, but a complete review of all prevailing variants is recommended prior to use. [More info](#)

OTI Annotation: This clone was engineered to express the complete ORF with an expression tag. Expression varies depending on the nature of the gene.

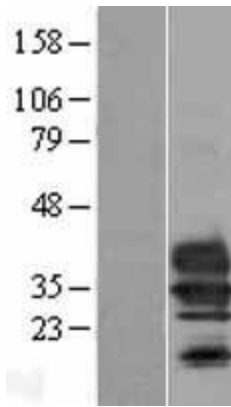
Components: The ORF clone is ion-exchange column purified and shipped in a 2D barcoded Matrix tube containing 10ug of transfection-ready, dried plasmid DNA (reconstitute with 100 ul of water).

Reconstitution Method:	<ol style="list-style-type: none">1. Centrifuge at 5,000xg for 5min.2. Carefully open the tube and add 100ul of sterile water to dissolve the DNA.3. Close the tube and incubate for 10 minutes at room temperature.4. Briefly vortex the tube and then do a quick spin (less than 5000xg) to concentrate the liquid at the bottom.5. Store the suspended plasmid at -20°C. The DNA is stable for at least one year from date of shipping when stored at -20°C.
Note:	Plasmids are not sterile. For experiments where strict sterility is required, filtration with 0.22um filter is required.
RefSeq:	NM_020665.6
RefSeq Size:	1580 bp
RefSeq ORF:	669 bp
Locus ID:	57393
UniProt ID:	Q9HBJ8
Cytogenetics:	Xp22.2
Protein Families:	Transmembrane
MW:	25.2 kDa
Gene Summary:	This gene encodes a type 1 transmembrane protein that is important for trafficking amino acid transporters to the apical brush border of proximal tubules. The encoded protein binds to amino acid transporters and regulates their expression on the plasma membrane. It also plays a role in controlling insulin exocytosis by regulating formation of the SNARE (soluble N-ethylmaleimide-sensitive-factor attachment protein receptor) complex in pancreatic beta cells. The extracellular domain of the encoded protein may be cleaved and shed from the plasma membrane specifically in pancreatic beta cells. [provided by RefSeq, Jun 2013]

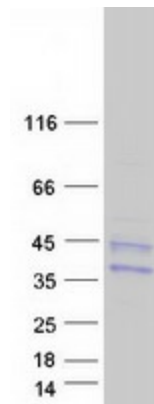
Product images:



Circular map for RC204775



Western blot validation of overexpression lysate (Cat# [LY412403]) using anti-DDK antibody (Cat# [TA50011-100]). Left: Cell lysates from untransfected HEK293T cells; Right: Cell lysates from HEK293T cells transfected with RC204775 using transfection reagent MegaTran 2.0 (Cat# [TT210002]).



Coomassie blue staining of purified CLTRN protein (Cat# [TP304775]). The protein was produced from HEK293T cells transfected with CLTRN cDNA clone (Cat# RC204775) using MegaTran 2.0 (Cat# [TT210002]).