

## Product datasheet for **RC204773**

### **CDA08 (ITFG1) (NM\_030790) Human Tagged ORF Clone**

#### **Product data:**

Product Type:	Expression Plasmids
Product Name:	CDA08 (ITFG1) (NM_030790) Human Tagged ORF Clone
Tag:	Myc-DDK
Symbol:	ITFG1
Synonyms:	2310047C21Rik; CDA08; LNKN-1; TIP
Vector:	pCMV6-Entry (PS100001)
E. coli Selection:	Kanamycin (25 ug/mL)
Cell Selection:	Neomycin



[View online »](#)

**ORF Nucleotide Sequence:**

>RC204773 ORF sequence  
 Red=Cloning site Blue=ORF Green=Tags(s)

TTTTGTAATACGACTCACTATAGGGCGGCCGGGAATTCGTCGACTGGATCCGGTACCGAGGAGATCTGCC  
 GCC**CGCATCGCC**

ATGGCGGGCGGGCCGGCTCCCGAGCTCTGGGCCCTCTTCTCGCCGCTCCTCGCAGGGCTTGCACTAC  
 TGGGAGTCGGGCCGGTCCCAGCGCGGGCGCTGCACAACGTCACGGCCGAGCTCTTTGGGGCCGAGGCCTG  
 GGGCACCTTTCGGCTTTTCGGGGACCTCAACTCCGACAAGCAGACGGATCTCTTCGTGCTCGGGAAAGA  
 AATGACTTAATCGTCTTTTTGGCAGACCAGAATGCACCCTATTTAAACCCAAAGTAAAGGTATCTTTCA  
 AGAATCACAGTGCATTGATAACAAGTGTAGTCCCTGGGATTATGATGGAGATTCTCAAATGGATGTCTT  
 TCTGACATATCTCCAAAAATTATGCCAAGAGTGAATTAGGAGCTGTTATCTTCTGGGGACAAAATCAA  
 ACATTAGATCCTAACAAATAGACCATACTCAATAGGACTTTTCAAGATGAGCCACTAATTATGGATTTC  
 ATGGTGATCTAATTCCTGATATTTTGGTATCACAAATGAATCCAACCAGCCACAGATACTATTAGGAGG  
 GAATTTATCATGGCATCCAGCATTGACCACTACAAGTAAATGCGAATTCACATTCTCATGCATTTATT  
 GATCTGACTGAAGATTTTACAGCAGATTTATTCCTGACGACATTGAATGCCACCCTAGTACCTTCCAGT  
 TTGAAATATGGGAAAATTTGGATGGAACTTCTCTGTCAGTACTATATTGGAAAAACCTCAAATATGAT  
 GGTGGTTGGACAGTCAGCATTTCAGACTTTGATGGAGATGGACACATGGATCATTTACTGCCAGGCTGT  
 GAAGATAAAAAATTGCCAAAAGAGTACCATCTACTTAGTGAGATCTGGGATGAAGCAGTGGGTTCCAGTCC  
 TACAAGATTTTCAGCAATAAGGGCACACTCTGGGCTTTGTGCCATTTGTGGATGAACAGCAACCAACTGA  
 AATACCAATTCGAATACCTTCATATTGGAGACTACAATATGGATGGCTATCCAGACGCTCTGGTCATA  
 CTAAGAACACATCTGGAAGCAACCAGCAGGCCCTTTTACTGGAGAACGTCCTTGAATAATGCAAGCT  
 GTGAAGAGGGCGCTCGAATGTTTTAAAGTCTACTGGGAGCTGACAGACCTAAATCAAATTAAGGATGCCAT  
 GGTTGCCACCTTCTTTGACATTTACGAAGATGGAATCTTGACATTGTAGTGCTAAGTAAAGGATATACA  
 AAGAATGATTTTGCCATTCATACACTAAAAATAACTTTGAAGCAGATGCTTATTTTGTAAAGTTATTG  
 TTCTTAGTGGTCTGTGTTCTAATGACTGTCTCGTAAGATAACACCCTTTGGAGTGAATCAACCTGGACC  
 TTATATCATGTATACAACTGTAGATGCAATGGGTATCTGAAAAATGGATCAGCTGGCCAACTCAGCCAA  
 TCCGCACATTTAGCTCTCCAACCTACCATAACAACGTGCTTGGTTTGGTTCGGAGCGCAATTTTCTTGACC  
 ATCTCTACGTTGGTATTTCCCGTCCATCTGGAGAAAAATCTATACGAAAAAAGAGTGGACTGCAATCAT  
 TCCAAATCCCAGCTAATTGTCATTCCATACCCTACAATGTCCCTCGAAGTTGGAGTGCCAACTGTAT  
 CTTACACCAAGTAATATTGTTCTGCTTACTGCTATAGCTCTCATCGGTGTCTGTGTTTTATCTTGCA  
 TAATTGGCATTTTACATTGGCAGGAAAAGAAAGCAGATGATAGAGAAAAACGACAAGAAGCCACCAGGT  
 TCATTTTGATGCTATG

**ACGCGT**ACGCGGCCGCTCGAGCAGAAACTCATCTCAGAAGAGGATCTGGCAGCAAATGATATCCTGGATT  
 ACAAGGATGACGACGATAAGGTTTAA

**Protein Sequence:**

>RC204773 protein sequence  
 Red=Cloning site Green=Tags(s)

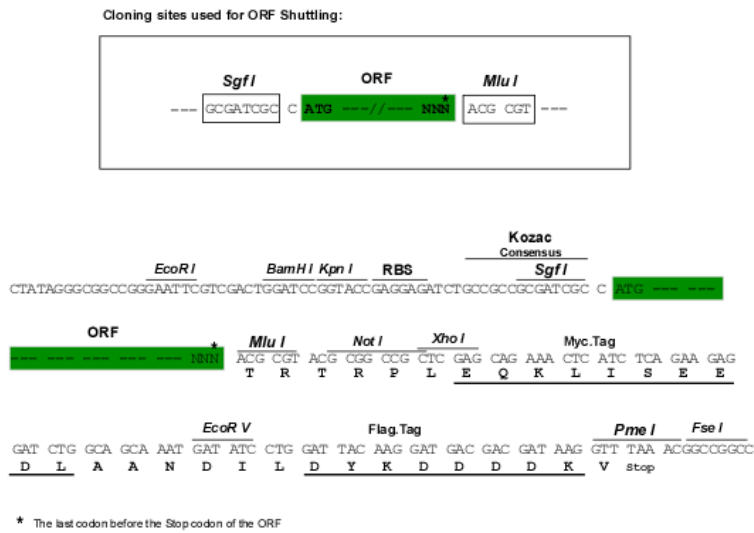
MAAAGRLPSSWALFSPLLAGLALLGVGPVPARALHNVTAELFGAEAWGTLAAFGLDLSNDKQTDLFLVLRER  
 NDLIVFLADQNAPYFKPKVKVSFKNHSALITSVVPDYGDSQMDVLLTYLPKNYAKSELGAVIFWQONQ  
 TLDPNMTILNRTFQDEPLIMDFNGDLIPDIFGITNESNQPQILLGGNLSWHPALTTTSMRIPHSHAFI  
 DLTEDFTADLFLTTLNATTSTFQFEIWNLDGNFSVSTILEKPNMMVVGQSAFADFDDGDHMDHLLPGC  
 EDKNCQKSTIYLVRSGMKQWVPLQDFSNGKTLWGFVFPVDEQQPTEIPIPI TLHIGDYNMDGYPDALVI  
 LKNTSGSNQQAFLLLENVPCNNASCEEARRMFKVYWELTDLNQIKDAMVATFFDIYEDGILDIVVLSKGYT  
 KNDFAIHTLKNFEADAYFVKVIVLSGLCSNDCPRKITPFVGNQPGPYIMYTTVDANGYLKNGSAGQLSQ  
 SAHLALQLPYNVGLGRSANFLDHLVYGI PRPSGEKSIRKQEWTAIIPNSQLIVIPYHNVPRSWSAKLY  
 LTPSNIVLLTAIALIGVCFILAIIGILHWQEKKADDREKRQEAHRHFHDAM

**TRTRP**LEQKLISEEDLAANDILDYKDDDDKV

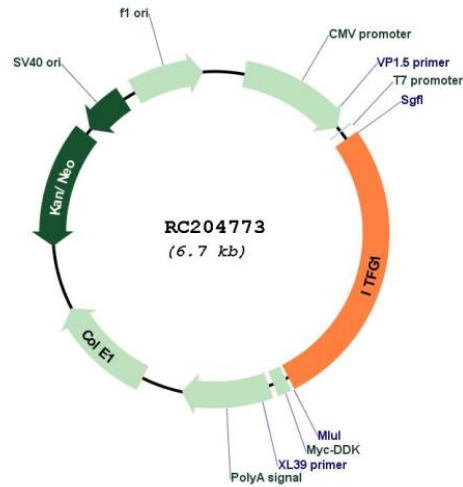
Chromatograms: [https://cdn.origene.com/chromatograms/mk6549\\_f02.zip](https://cdn.origene.com/chromatograms/mk6549_f02.zip)

Restriction Sites: SgfI-MluI

Cloning Scheme:



Plasmid Map:

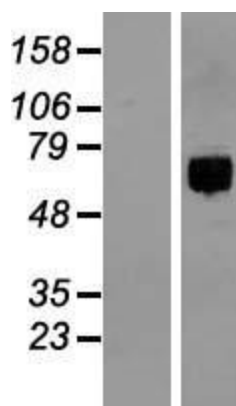


ACCN: NM\_030790

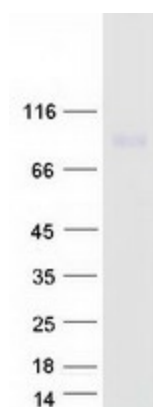
ORF Size: 1836 bp

<b>OTI Disclaimer:</b>	The molecular sequence of this clone aligns with the gene accession number as a point of reference only. However, individual transcript sequences of the same gene can differ through naturally occurring variations (e.g. polymorphisms), each with its own valid existence. This clone is substantially in agreement with the reference, but a complete review of all prevailing variants is recommended prior to use. <a href="#">More info</a>
<b>OTI Annotation:</b>	This clone was engineered to express the complete ORF with an expression tag. Expression varies depending on the nature of the gene.
<b>Components:</b>	The ORF clone is ion-exchange column purified and shipped in a 2D barcoded Matrix tube containing 10ug of transfection-ready, dried plasmid DNA (reconstitute with 100 ul of water).
<b>Reconstitution Method:</b>	<ol style="list-style-type: none"><li>1. Centrifuge at 5,000xg for 5min.</li><li>2. Carefully open the tube and add 100ul of sterile water to dissolve the DNA.</li><li>3. Close the tube and incubate for 10 minutes at room temperature.</li><li>4. Briefly vortex the tube and then do a quick spin (less than 5000xg) to concentrate the liquid at the bottom.</li><li>5. Store the suspended plasmid at -20°C. The DNA is stable for at least one year from date of shipping when stored at -20°C.</li></ol>
<b>RefSeq:</b>	<a href="#">NM_030790.5</a>
<b>RefSeq Size:</b>	2261 bp
<b>RefSeq ORF:</b>	1839 bp
<b>Locus ID:</b>	81533
<b>UniProt ID:</b>	<a href="#">Q8TB96</a>
<b>Cytogenetics:</b>	16q12.1
<b>Domains:</b>	FG-GAP
<b>Protein Families:</b>	Secreted Protein, Transmembrane
<b>MW:</b>	68.1 kDa
<b>Gene Summary:</b>	Modulator of T-cell function. Has a protective effect in graft versus host disease model (By similarity).[UniProtKB/Swiss-Prot Function]

## Product images:



Western blot validation of overexpression lysate (Cat# [LY410712]) using anti-DDK antibody (Cat# [TA50011-100]). Left: Cell lysates from untransfected HEK293T cells; Right: Cell lysates from HEK293T cells transfected with RC204773 using transfection reagent MegaTran 2.0 (Cat# [TT210002]).



Coomassie blue staining of purified ITFG1 protein (Cat# [TP304773]). The protein was produced from HEK293T cells transfected with ITFG1 cDNA clone (Cat# RC204773) using MegaTran 2.0 (Cat# [TT210002]).