

## Product datasheet for **RC204770L4V**

### TTC35 (EMC2) (NM\_014673) Human Tagged ORF Clone Lentiviral Particle

#### Product data:

Product Type:	Lentiviral Particles
Product Name:	TTC35 (EMC2) (NM_014673) Human Tagged ORF Clone Lentiviral Particle
Symbol:	TTC35
Synonyms:	KIAA0103; TTC35
Mammalian Cell Selection:	Puromycin
Vector:	pLenti-C-mGFP-P2A-Puro (PS100093)
Tag:	mGFP
ACCN:	NM_014673
ORF Size:	891 bp
ORF Nucleotide Sequence:	The ORF insert of this clone is exactly the same as(RC204770).
OTI Disclaimer:	The molecular sequence of this clone aligns with the gene accession number as a point of reference only. However, individual transcript sequences of the same gene can differ through naturally occurring variations (e.g. polymorphisms), each with its own valid existence. This clone is substantially in agreement with the reference, but a complete review of all prevailing variants is recommended prior to use. <a href="#">More info</a>
OTI Annotation:	This clone was engineered to express the complete ORF with an expression tag. Expression varies depending on the nature of the gene.
RefSeq:	<a href="#">NM_014673.2</a>
RefSeq Size:	1268 bp
RefSeq ORF:	894 bp
Locus ID:	9694
UniProt ID:	<a href="#">Q15006</a>
Cytogenetics:	8q23.1
Domains:	TPR
Protein Families:	Protease

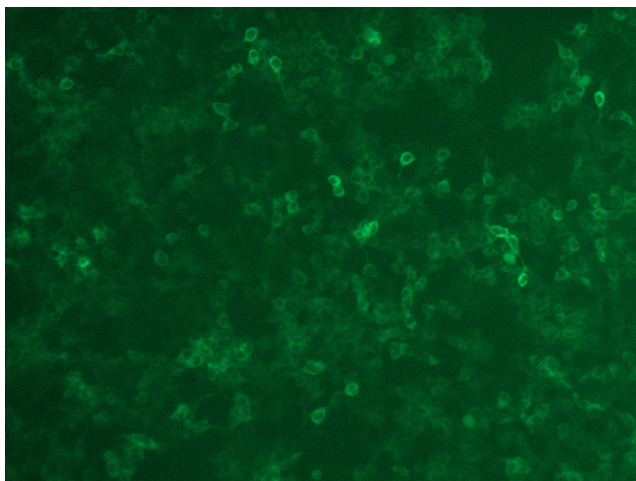


[View online »](#)

MW: 34.8 kDa

**Gene Summary:** Part of the endoplasmic reticulum membrane protein complex (EMC) that enables the energy-independent insertion into endoplasmic reticulum membranes of newly synthesized membrane proteins (PubMed:30415835, PubMed:29809151, PubMed:29242231, PubMed:32459176, PubMed:32439656). Preferentially accommodates proteins with transmembrane domains that are weakly hydrophobic or contain destabilizing features such as charged and aromatic residues (PubMed:30415835, PubMed:29809151, PubMed:29242231). Involved in the cotranslational insertion of multi-pass membrane proteins in which stop-transfer membrane-anchor sequences become ER membrane spanning helices (PubMed:30415835, PubMed:29809151). It is also required for the post-translational insertion of tail-anchored/TA proteins in endoplasmic reticulum membranes (PubMed:29809151, PubMed:29242231). By mediating the proper cotranslational insertion of N-terminal transmembrane domains in an N-exo topology, with translocated N-terminus in the lumen of the ER, controls the topology of multi-pass membrane proteins like the G protein-coupled receptors (PubMed:30415835). By regulating the insertion of various proteins in membranes, it is indirectly involved in many cellular processes (Probable). [UniProtKB/Swiss-Prot Function]

### Product images:



[RC204770L4] was used to prepare Lentiviral particles using [TR30037] packaging kit. HEK293T cells were transduced with RC204770L4V particle to overexpress human EMC2-mGFP fusion protein.