

## Product datasheet for RC204761

### MTERF2 (NM\_025198) Human Tagged ORF Clone

#### Product data:

Product Type:	Expression Plasmids
Product Name:	MTERF2 (NM_025198) Human Tagged ORF Clone
Tag:	Myc-DDK
Symbol:	MTERF2
Synonyms:	MTERFD3; mTERFL
Mammalian Cell Selection:	Neomycin
Vector:	pCMV6-Entry (PS100001)
E. coli Selection:	Kanamycin (25 ug/mL)
ORF Nucleotide Sequence:	>RC204761 ORF sequence Red=Cloning site Blue=ORF Green=Tags(s)

TTTTGTAATACGACTCACTATAGGGCGCCGGAATTCGTCGACTGGATCCGGTACCGAGGAGATCTGCC  
GCC**CGGATCGCC**

ATGTTGTGGAAGCTGCTGCTGAGATCCCAGTCTGCAGGCTGTGTTCTTTCAGAAAGATGCGATCACCTC  
CAAATACAGACCTTTCTTAGCATGCTTACCTATACAAGTATAAACAGTCGAGCAAAGAAAATACAAG  
AACAGTGGAAAAGCTCTATAAATGTTTCAGTTGACATTAGGAAAATTCGTAGATTAAGGATGGGACTT  
TTAGAGGATGAAACCTATGTTGAAGAAATGCGAATATTTACAAGAAGTGGTCCGATGAGACTGCTG  
TAGCCAGTATTTTGAACGCTGCCGGAAGCAATTGTCTGTAGTCCAACCGCTGTTAACACCCAGAGAAA  
ACTCTGGCAGTTGGTCTGCAAAAATGAGGAAGAGTTAATCAAGTTAATAGAGCAGTTCCAGAATCTTTC  
TTTACTATTAAGACCAAGAGAACCAGAAGCTGAATGTTCAAGTCTTTCAGAGTTGGGACTAAAAAATG  
TGGTCATTAGCAGACTTTTGACAGCTGCACCTAATGTTTTTCATAATCCTGTTGAGAAGAATAAGCAAAT  
GGTAAGAATTCTCCAAGAGAGTTATCTAGATGTAGGTGGCTCTGAGGCCAACATGAAAGTTTGGCTACTA  
AAATTGTTAAGCCAAAACCCATTTATTTGTTAAATCTCCACAGCTATAAAGGAAACACTAGAATTTCC  
TCCAGGAGCAAGGTTTACCAGCTTTGAAATCTCCAGCTTCTATCCAACTCAAAGGATTTCTTTTCA  
ACTTTGCCAAGAAGTATACAGAATAGTATTTCTTCTCTAAAAATGCTTTTAAATGCACAGATCATGAC  
CTGAAGCAATTAGTTTTGAAATGTCCTGCCCTTTATATTATTCTGTTCCAGTTTTAGAAGAGAGAATGC  
AAGGATTATTGAGAGAAGGAATTTCCATAGCTCAGATAAGAGAGACGCCAATGGTCTTGAATTAACACC  
ACAGATAGTACAGTACAGGATAAGGAACTGAATTCCTCAGGCTACAGAATAAAGGATGGACATCTAGCA  
AATCTAAATGGATCAAAAAAGAGTTTGAAGCTAATTTTGGCAAATTCAGGCCAAAAAAGTAAGGCCAT  
TATTTAACCTGTGGCACCATTAATGTTGAAGAA

**ACGCGT**ACGCGGCCGCTCGAGCAGAACTCATCTCAGAAGAGGATCTGGCAGCAAATGATATCCTGGATT  
ACAAGGATGACGACGATAAGGTTTAA



[View online >](#)

**Protein Sequence:** >RC204761 protein sequence  
Red=Cloning site Green=Tags(s)

MLWKLLLRSQSRLCSFRKMRSPPKYRPFACFTYTTDKQSSKENTRTVEKLYKCSVDIRKIRRLKGWVLEDETYVEEIANILQELGADETAVASILERCPEAIVCSPTAVNTQRKLWQLVCKNEEELIKLIEQFPESF FTIKDQENQKLNQFFQELGLKNVVISRLLTAAPNVFHNHPVEKNKQMVRIHQESYLDVGGSEANMKVWLL KLLSQNPFIILLNSPTAIKETLEFLQEQGFTSFEILQLLSKLKGFLFQLCPRSIQNSISFSKNAFKCTDHD LKQLVLKCPALLYYSVPVLEERMQGLLREGISIAQIRETPMVLELTPQIVQYRIRKLNSSGYRIKDGHLA NLNGSKKEFEANFGKIQAkkVRPLFNPVAPLNVEE

TRTRPLEQKLISEEDLAANDILDYKDDDDKV

**Chromatograms:** [https://cdn.origene.com/chromatograms/mk6426\\_c12.zip](https://cdn.origene.com/chromatograms/mk6426_c12.zip)

**Restriction Sites:** SgfI-MluI

**Cloning Scheme:**



\* The last codon before the Stop codon of the ORF

**ACCN:** NM\_025198

**ORF Size:** 1155 bp

**OTI Disclaimer:** The molecular sequence of this clone aligns with the gene accession number as a point of reference only. However, individual transcript sequences of the same gene can differ through naturally occurring variations (e.g. polymorphisms), each with its own valid existence. This clone is substantially in agreement with the reference, but a complete review of all prevailing variants is recommended prior to use. [More info](#)

**OTI Annotation:** This clone was engineered to express the complete ORF with an expression tag. Expression varies depending on the nature of the gene.

**Components:** The ORF clone is ion-exchange column purified and shipped in a 2D barcoded Matrix tube containing 10ug of transfection-ready, dried plasmid DNA (reconstitute with 100 ul of water).

**Reconstitution Method:**

1. Centrifuge at 5,000xg for 5min.
2. Carefully open the tube and add 100ul of sterile water to dissolve the DNA.
3. Close the tube and incubate for 10 minutes at room temperature.
4. Briefly vortex the tube and then do a quick spin (less than 5000xg) to concentrate the liquid at the bottom.
5. Store the suspended plasmid at -20°C. The DNA is stable for at least one year from date of shipping when stored at -20°C.

**RefSeq:** [NM\\_025198.4](#)

**RefSeq Size:** 1780 bp

**RefSeq ORF:** 1158 bp

**Locus ID:** 80298

**UniProt ID:** [Q49AM1](#)

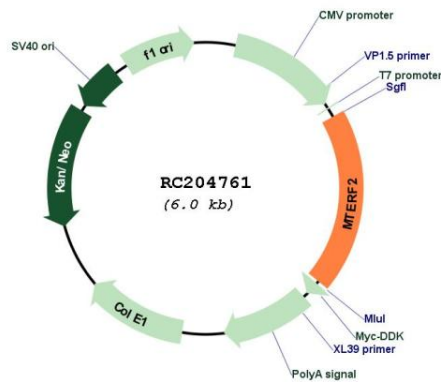
**Cytogenetics:** 12q23.3

**Domains:** Mterf

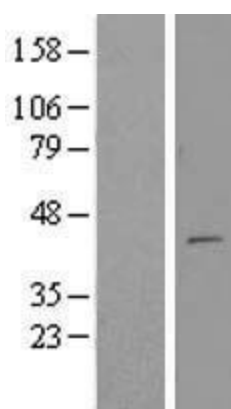
**MW:** 44.4 kDa

**Gene Summary:** Binds mitochondrial DNA and plays a role in the regulation of transcription of mitochondrial mRNA and rRNA species.[UniProtKB/Swiss-Prot Function]

**Product images:**



Circular map for RC204761



Western blot validation of overexpression lysate (Cat# [LY422353]) using anti-DDK antibody (Cat# [TA50011-100]). Left: Cell lysates from untransfected HEK293T cells; Right: Cell lysates from HEK293T cells transfected with [RC214531] using transfection reagent MegaTran 2.0 (Cat# [TT210002]).