

## Product datasheet for **RC204760**

### **SHKBP1 (NM\_138392) Human Tagged ORF Clone**

#### **Product data:**

Product Type:	Expression Plasmids
Product Name:	SHKBP1 (NM_138392) Human Tagged ORF Clone
Tag:	Myc-DDK
Symbol:	SHKBP1
Synonyms:	PP203; Sb1
Mammalian Cell Selection:	Neomycin
Vector:	pCMV6-Entry (PS100001)
E. coli Selection:	Kanamycin (25 ug/mL)



[View online »](#)

**ORF Nucleotide Sequence:**

>RC204760 ORF sequence  
 Red=Cloning site Blue=ORF Green=Tags(s)

TTTTGTAATACGACTCACTATAGGGCGGCCGGAATTCGTCGACTGGATCCGGTACCGAGGAGATCTGCC  
 GCC**GCGATCGCC**

ATGGCAGCAGCGGCTACTGCAGCCGAGGGGTCCCAGTCGGGGGCTCCCGGGGAAGTCATCCATCTGA  
 ATGTGGGAGGCAAGAGATTCAGTACCTCTCGCCAGACTCTCACCTGGATCCCAGACTCCTTCTTCCAG  
 TCTTCTGAGCGGACGCATCTCGACGCTGAAAGATGAGACCGGAGCAATCTTCATCGACAGGGACCTACA  
 GTCTTCGCCCCCATCCTCAACTTCTGCGCACAAAGAGTTGGATCCCAGGGGTGCCACGGTTCAGCC  
 TCCTCCATGAAGCCAGTTCTATGGGCTCACTCCTCTGGTTTCGTCGCTGCAGCTTCGAGAGGAGTTGGA  
 TCGATCTTCTGTGAAACGTCCTCTTCAATGGTTACCTGCCGCCACCAGTGTCCAGTGAAGCGGCGG  
 AACCGGCACAGCCTAGTGGGGCCTCAGCAGCTAGGAGGACGGCCAGCCCCTGCCGACGGAGCAACACGA  
 TGCCCCCAACCTTGGCAATGCAGGGCTGCTGGGCCGAATGCTGGATGAGAAAACCCCTCCCTCACCTC  
 AGGACAACCTGAGGAGCCGGGATGGTGCCTGGTGTGTGGACACCATAATTGGATCGCTGTGGCCTAT  
 ACCCAGTTTCTAGTCTGCTACAGGTTGAAGGAAGCCTCTGGCTGGCAGCTGGTGTTCAGCCCCCGCC  
 TGGACTGGCCATCGAACGACTGGCGCTCACAGCCGGGTGCATGGTGGGGCTTTGGGTGAACATGACAA  
 GATGGTGGCAGCAGCCACCGGCAGCGAGATCCTGCTATGGGCTCTGCAGGCGAAGGCGGTGGTCCGAG  
 ATAGGGGTCTTTCATCTGGGGTGCCTGTGGAGGCCTTGTCTTCGTCGGGAACAGCTCATTGCTACAA  
 GCCACACAGGGCGCATCGGGGTGTGGAATGCCGTACCAAGCACTGGCAGGTCCAGGAGTGCAGCCAT  
 CACCAGTTATGACGCGCAGGCTCCTTCTCCTCTGGGCTGCAACAACGGCTCCATTTACTACGTGGAT  
 GTGCAGAAGTTCCCTTTCGCATGAAAGACAACGACCTCCTTGTGACGAGCTCTATCGGGACCCAGCGG  
 AGGATGGGGTACCGCCCTCAGTGTCTACCTCACCCCAAGACCAGTGACAGTGGGAATGGATCGAGAT  
 CGCCTATGGCACCAAGCTCAGGGGGCGTGCGGGTACGTCGACGACCCGGAGACTGTGGGCTCGGGGCT  
 CAGCTCTTCCAGACCTTCACTGTGCACCCGAGCCCTGTCACCAAGATCATGCTGTGCGGAGAAGCACCTCA  
 TCTCAGTCTGTGCCGACAACAACACGTCGCGGACATGGTCTGTGACTCGTTCGCGGCATGATTTCCAC  
 CCAGCCCCGGTCCACCCCACTCGTTCCTTAAAGATCCTGGTCTGGAGTCGGCAGATGGGCATGGCGGC  
 TGCAGTGTGGCAATGACATTGGCCCTACGGTGCAGGGGACGACAGCTAGTGTTCATCCAGAAGGTGG  
 TGCCAGTGCCAGCCAGCTTTCGTCGCTCTCATCTACTGGCAGCGGGTGTGCTCCGTGCGCTCCGT  
 GGACGGCTCACCCAGCAGCCCTCACAGTGTGGAGTGCAGGGGCTCCCGCGGCTCGGCTCTCGGCC  
 CGGCGCTACCTGCTCACTGGCCAGGCCAACGGCAGCTTGCCATGTGGGACCTAACCCCGCATCTCCCTACC  
 GCCTCGGCCAGGCCCTGCAGGTGGCCTGACGGAGCAAGAGCTGATGGAACAGCTGGAACACTGTGAGCT  
 GGCCCCGCGGCTCCTTCACTCCCTCATGGGGTGTCTCCCCAGCCCTCACCCCGCATCTCCCTACC  
 AGCTCCACTCAGCTCCAGCAACACCTCCTTGTCTGGCCACCGTGGGAGCCCAAGCCCCCGCAGGCTG  
 AGGCCCGCGCGGTGGTGGGGCAGCTTTGTGGAACGCTGCCAGGAAGTGGTGGGAGTGGGCCAGACCT  
 CCGACGGCCACCCACACCCAGCCCCGTGGCCCTCCAGCGGTCTCGGCACTCCCTCACACCTCCAAGATG  
 AAGCTCAATGAACTTCCTT

**ACGCGT**ACGCGGCGGCTCGAGCAGAACTCATCTCAGAAGAGGATCTGGCAGCAAATGATATCCTGGATT  
 ACAAGGATGACGACGATAAGGTTTAA

Protein Sequence: >RC204760 protein sequence  
 Red=Cloning site Green=Tags(s)

```

MAAAATAAEGVPSRGGPPGEVIHLNVGGKRFSTSRQTLTWIPDSFFSLLSGRISTLKDGTGAIIFIDRDPT
VFAPILNFLRTKELDPRGVHGSSLLHEAQFYGLTPLVRRQLREELDRSSCGNVLFNGYLPVPVFKRR
NRHSLVGPPQLGGRPAPVRRSNTMPPNLGNAGLLGRMLDEKTPPSPSGQPEEPMVRLVCGHHNWIAYAY
TQFLVCYRLKEASGWQLVFSSPRLDWPIERLAL TARVHGGALGEHDKMVAATGSEILLWALQAEGGGSE
IGVFHLGVPVEALFFVGNQLIATSHTRIGVWNAVTKHWQVQEVQPIITSYDAAGSFLLGCNNGSIYYVD
VQKFLPRMKDNDLLVSELYRDPADGVTALSVYLTPKTSDSGNWIEIAYGTSSGGVRVIVQHPETVGS GP
QLFQFTTVHRSPVTKIMLSEKHLISVCADNNHVRTWSVTRFRGMI STQPGSTPLASFKILALESADGHGG
CSAGNDIGPYGERDDQLVFIQKVPSASQLFVRLSSTGQRVCSVRSVDGSPPTAF TVLECEGSRRLGSRP
RRYLLTGQANGSLAMWDLTTAMDGLGQAPAGGLTEQELMEQLEHCELAPPAPSAPSWGCLPSPSPRISLT
SLHSASSNTSLSGHRGSPSPQAEARRRGGGSFVERCQELVRS GPD LRRPPTPAPWPSSGLGTPLTPPKM
KLNETSF
  
```

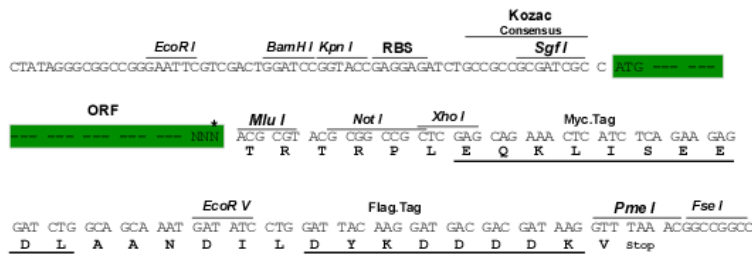
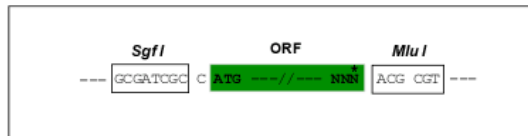
TRTRPLEQKLI SEEDLAANDILDYKDDDDKV

Chromatograms: [https://cdn.origene.com/chromatograms/mk6690\\_g08.zip](https://cdn.origene.com/chromatograms/mk6690_g08.zip)

Restriction Sites: Sgfl-MluI

Cloning Scheme:

Cloning sites used for ORF Shuttling:



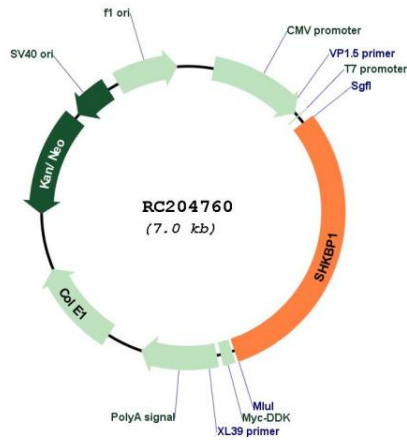
\* The last codon before the Stop codon of the ORF

ACCN: NM\_138392

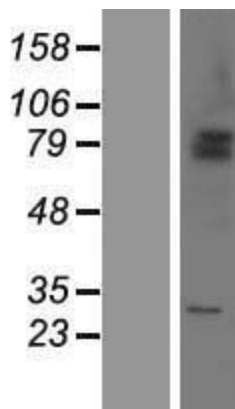
ORF Size: 2121 bp

<b>OTI Disclaimer:</b>	Due to the inherent nature of this plasmid, standard methods to replicate additional amounts of DNA in E. coli are highly likely to result in mutations and/or rearrangements. Therefore, OriGene does not guarantee the capability to replicate this plasmid DNA. Additional amounts of DNA can be purchased from OriGene with batch-specific, full-sequence verification at a reduced cost. Please contact our customer care team at <a href="mailto:custsupport@origene.com">custsupport@origene.com</a> or by calling 301.340.3188 option 3 for pricing and delivery.
	The molecular sequence of this clone aligns with the gene accession number as a point of reference only. However, individual transcript sequences of the same gene can differ through naturally occurring variations (e.g. polymorphisms), each with its own valid existence. This clone is substantially in agreement with the reference, but a complete review of all prevailing variants is recommended prior to use. <a href="#">More info</a>
<b>OTI Annotation:</b>	This clone was engineered to express the complete ORF with an expression tag. Expression varies depending on the nature of the gene.
<b>Components:</b>	The ORF clone is ion-exchange column purified and shipped in a 2D barcoded Matrix tube containing 10ug of transfection-ready, dried plasmid DNA (reconstitute with 100 ul of water).
<b>Reconstitution Method:</b>	<ol style="list-style-type: none"> <li>1. Centrifuge at 5,000xg for 5min.</li> <li>2. Carefully open the tube and add 100ul of sterile water to dissolve the DNA.</li> <li>3. Close the tube and incubate for 10 minutes at room temperature.</li> <li>4. Briefly vortex the tube and then do a quick spin (less than 5000xg) to concentrate the liquid at the bottom.</li> <li>5. Store the suspended plasmid at -20°C. The DNA is stable for at least one year from date of shipping when stored at -20°C.</li> </ol>
<b>Note:</b>	Plasmids are not sterile. For experiments where strict sterility is required, filtration with 0.22um filter is required.
<b>RefSeq:</b>	<a href="#">NM_138392.2</a>
<b>RefSeq Size:</b>	2379 bp
<b>RefSeq ORF:</b>	2124 bp
<b>Locus ID:</b>	92799
<b>UniProt ID:</b>	<a href="#">Q8TBC3</a>
<b>Cytogenetics:</b>	19q13.2
<b>Domains:</b>	BTB, WD40, K_tetra
<b>Protein Families:</b>	Ion Channels: Other
<b>MW:</b>	76.3 kDa
<b>Gene Summary:</b>	Inhibits CBL-SH3KBP1 complex mediated down-regulation of EGFR signaling by sequestration of SH3KBP1. Binds to SH3KBP1 and prevents its interaction with CBL and inhibits translocation of SH3KBP1 to EGFR containing vesicles upon EGF stimulation. [UniProtKB/Swiss-Prot Function]

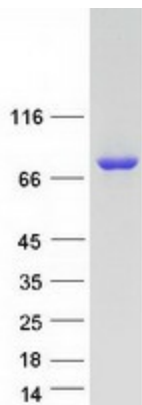
Product images:



Circular map for RC204760



Western blot validation of overexpression lysate (Cat# [LY408656]) using anti-DDK antibody (Cat# [TA50011-100]). Left: Cell lysates from untransfected HEK293T cells; Right: Cell lysates from HEK293T cells transfected with RC204760 using transfection reagent MegaTran 2.0 (Cat# [TT210002]).



Coomassie blue staining of purified SHKBP1 protein (Cat# [TP304760]). The protein was produced from HEK293T cells transfected with SHKBP1 cDNA clone (Cat# RC204760) using MegaTran 2.0 (Cat# [TT210002]).