

## Product datasheet for **RC204757**

### **MS4A6A (NM\_152852) Human Tagged ORF Clone**

#### Product data:

**Product Type:** Expression Plasmids  
**Product Name:** MS4A6A (NM\_152852) Human Tagged ORF Clone  
**Tag:** Myc-DDK  
**Symbol:** MS4A6A  
**Synonyms:** 4SPAN3; 4SPAN3.2; CD20L3; CDA01; MS4A6; MST090; MSTP090  
**Mammalian Cell Selection:** Neomycin  
**Vector:** pCMV6-Entry (PS100001)  
**E. coli Selection:** Kanamycin (25 ug/mL)  
**ORF Nucleotide Sequence:** >RC204757 ORF sequence  
**Red=Cloning site Blue=ORF Green=Tags(s)**

TTTTGTAATACGACTCACTATAGGGCGCCGGGAATTCGTCGACTGGATCCGGTACCGAGGAGATCTGCC  
GCC**CGATCGCC**

ATGACATCACAACTGTTCCCAATGAGACCATCATAGTGCTCCCATCAAATGTCATCAACTTCTCCCAAG  
CAGAGAAACCCGAACCCACCAACCAGGGGCAGGATAGCCTGAAGAAACATCTACACGCAGAAATCAAAGT  
TATTGGGACTATCCAGATCTTGTGTGGCATGATGGTATTGAGCTTGGGGATCATTTTGGCATCTGCTTCC  
TTCTCTCAAATTTTACCCAAGTACTTCTACACTGTTGAACTCTGCTTACCCATTCATAGGACCCTTTT  
TTTTTATCATCTCTGGCTCTCTATCAATCGCCACAGAGAAAAGGTTGACCAAGCTTTTGGTGCATAGCAG  
CCTGGTTGGAAGCATTCTGAGTGCTCTGTCTGCCCTGGTGGTTTTATTATCCTGTCTGTCAAACAGGCC  
ACCTTAAATCCTGCCTCACTGCAGTGTGAGTTGGACAAAATAATATACCAACAAGAAGTTATGTTTCTT  
ACTTTTATCATGATTCACCTTTATACCACGGACTGCTATACAGCCAAAGCCAGTCTGGCTGGATCCCTCTC  
TCTGATGCTGATTTGCACTCTGCTGGAATTCTGCCTAGCTGTGCTCACTGCTGTGCTGCGGTGGAACAG  
GCTTACTCTGACTTCCCTGGGAGTGTACTTTTCTGCCTCACAGTTACATTGGTAATTCTGGCATGTCTC  
CAAAAATGACTCATGACTGTGGATATGAAGAACTATTGACTTCT

**ACGCGT**ACGCGGCCGCTCGAGCAGAACTCATCTCAGAAGAGGATCTGGCAGCAAATGATATCCTGGATT  
ACAAGGATGACGACGATAAGGTTTAA



[View online »](#)

**Protein Sequence:** >RC204757 protein sequence  
 Red=Cloning site Green=Tags(s)

MTSQPVPNETIIVLPSNVINFSQAЕКPEPTNQGD<sup>+</sup>SLKKHLHAEIKVIGTIQILCGMMVLSLGIILASAS  
 FSPNFTQVTSTLLNSAYPFIGPFFFIISGSLSIATEKRLTKLLVHSSLVGSILSALSALVGFIIISVKQA  
 TLNPASLQCELDKNNIPTRSYVSYFYHDSLYTTDCYTAKASLAGLSLMLICTLLEFCLAVLTAVLRWKQ  
 AYSDFPGSVLFLPHSYIGNSGMSSKMT<sup>+</sup>HDCGYEELLTS

TRTRPLEQKLISEEDLAANDILDYKDDDDKV

**Chromatograms:** [https://cdn.origene.com/chromatograms/mk6067\\_c09.zip](https://cdn.origene.com/chromatograms/mk6067_c09.zip)

**Restriction Sites:** SgfI-MluI

**Cloning Scheme:**

Cloning sites used for ORF Shuttling:



\* The last codon before the Stop codon of the ORF

**ACCN:** NM\_152852

**ORF Size:** 744 bp

**OTI Disclaimer:** The molecular sequence of this clone aligns with the gene accession number as a point of reference only. However, individual transcript sequences of the same gene can differ through naturally occurring variations (e.g. polymorphisms), each with its own valid existence. This clone is substantially in agreement with the reference, but a complete review of all prevailing variants is recommended prior to use. [More info](#)

**OTI Annotation:** This clone was engineered to express the complete ORF with an expression tag. Expression varies depending on the nature of the gene.

**Components:** The ORF clone is ion-exchange column purified and shipped in a 2D barcoded Matrix tube containing 10ug of transfection-ready, dried plasmid DNA (reconstitute with 100 ul of water).

**Reconstitution Method:**

1. Centrifuge at 5,000xg for 5min.
2. Carefully open the tube and add 100ul of sterile water to dissolve the DNA.
3. Close the tube and incubate for 10 minutes at room temperature.
4. Briefly vortex the tube and then do a quick spin (less than 5000xg) to concentrate the liquid at the bottom.
5. Store the suspended plasmid at -20°C. The DNA is stable for at least one year from date of shipping when stored at -20°C.

**RefSeq Size:** 1819 bp

**RefSeq ORF:** 747 bp

**Locus ID:** 64231

**UniProt ID:** [Q9H2W1](#)

**Cytogenetics:** 11q12.2

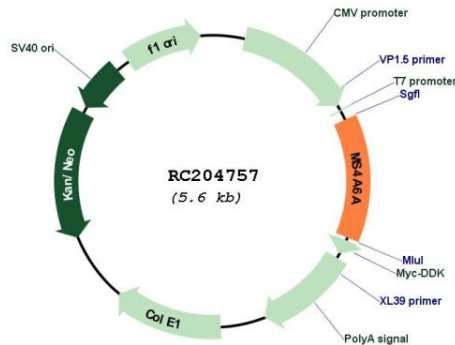
**Domains:** CD20

**Protein Families:** Druggable Genome, Transmembrane

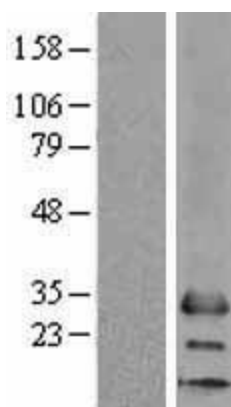
**MW:** 26.9 kDa

**Gene Summary:** This gene encodes a member of the membrane-spanning 4A gene family. Members of this nascent protein family are characterized by common structural features and similar intron/exon splice boundaries and display unique expression patterns among hematopoietic cells and nonlymphoid tissues. The gene encoding this protein is localized to 11q12.1, among a cluster of family members. Alternative splicing of this gene results in several transcript variants that encode different protein isoforms. [provided by RefSeq, Oct 2011]

### Product images:



Circular map for RC204757



Western blot validation of overexpression lysate (Cat# [LY403499]) using anti-DDK antibody (Cat# [TA50011-100]). Left: Cell lysates from untransfected HEK293T cells; Right: Cell lysates from HEK293T cells transfected with RC204757 using transfection reagent MegaTran 2.0 (Cat# [TT210002]).