

Product datasheet for **RC204756**

CEP20 (NM_144600) Human Tagged ORF Clone

Product data:

Product Type: Expression Plasmids
Product Name: CEP20 (NM_144600) Human Tagged ORF Clone
Tag: Myc-DDK
Symbol: CEP20
Synonyms: C16orf63; FOPNL; FOR20; PHSECRG2
Mammalian Cell Selection: Neomycin
Vector: pCMV6-Entry (PS100001)
E. coli Selection: Kanamycin (25 ug/mL)
ORF Nucleotide Sequence: >RC204756 ORF sequence
 Red=Cloning site Blue=ORF Green=Tags(s)

TTTTGTAATACGACTCACTATAGGGCGGCCGGAATTCGTCGACTGGATCCGGTACCGAGGAGATCTGCC
 GCC**CGATCGCC**

ATGGCGACTGTGGCAGAGTTGAAGGCTGTTTTAAAGGACACCTTGAAAAAAGGGGTATTAGGGCATT
 TAAAGCAAGGATCCGAGCTGAAGTTTTCAATGCCCTAGATGATGACCGTGAACCCCGACCATCATTGTC
 TCATGAAAACCTTCTAATTAATGAATTAATTCGAGAGTATTTAGAATTCAACAAATATAAGTATACAGCA
 TCTGTCCTCATAGCAGAATCTGGTCAACCTGTAGTTCCGTTGGACAGACAGTTTCTCATCCATGAACATA
 ATGCATTTGAAGAATCAAAGGATAATACAATACCTCTTTTATATGGGATTTTAGCCATTCTTGCCTGG
 AACTAAGGATGGCATCCAGAATGCATTTCTGAAAGGGCCTTCACTTCAGCCTTCAGACCCAAGTCTTGGC
 AGACAACCTAGTAGAAGAAAGCCAATGGATGACCACCTAAGAAAGGAGGAACAGAAAAGTACTAACATTG
 AAGATCTTCATGTTTCTCAGGCAGTCAACAGA

ACGCGTACGCGGCCGCTCGAGCAGAACTCATCTCAGAAGAGGATCTGGCAGCAAATGATATCCTGGATT
 ACAAGGATGACGACGATAAGGTTTAA

Protein Sequence: >RC204756 protein sequence
 Red=Cloning site Green=Tags(s)

MATVAELKAVLKDTLEKKGVLGHLKARIRAEVFNALDDDREPRPSLSHENLLINELIREYLEFNKYKYTA
 SVLIAESGQPVVPLDRQFLIHENAFEEESKDNTIPLLYGILAHFLRGTKDGIQNAFLKGPSLQSPDPSLG
 RQPSRRKPMDDHLRKEEQKSTNIEDLHVSQAVNR

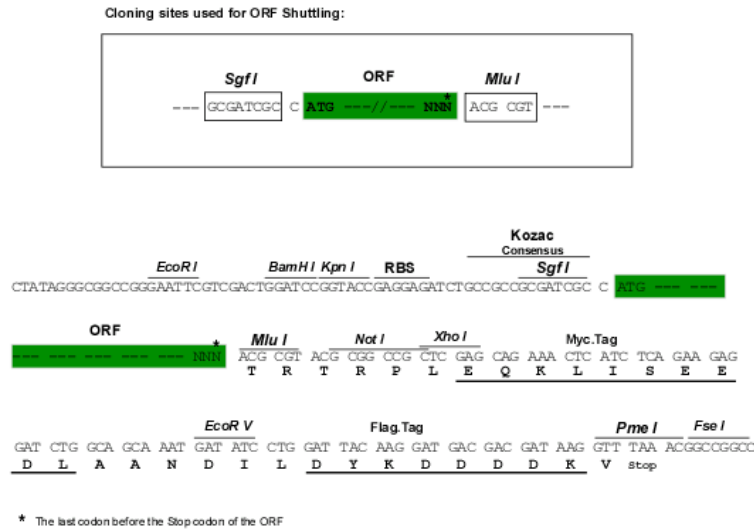
TRTRPLEQKLISEEDLAANDILDYKDDDDKV

Chromatograms: https://cdn.origene.com/chromatograms/mk6438_b12.zip


[View online »](#)

Restriction Sites: SgfI-MluI

Cloning Scheme:



ACCN: NM_144600

ORF Size: 522 bp

OTI Disclaimer: The molecular sequence of this clone aligns with the gene accession number as a point of reference only. However, individual transcript sequences of the same gene can differ through naturally occurring variations (e.g. polymorphisms), each with its own valid existence. This clone is substantially in agreement with the reference, but a complete review of all prevailing variants is recommended prior to use. [More info](#)

OTI Annotation: This clone was engineered to express the complete ORF with an expression tag. Expression varies depending on the nature of the gene.

Components: The ORF clone is ion-exchange column purified and shipped in a 2D barcoded Matrix tube containing 10ug of transfection-ready, dried plasmid DNA (reconstitute with 100 ul of water).

Reconstitution Method:

1. Centrifuge at 5,000xg for 5min.
2. Carefully open the tube and add 100ul of sterile water to dissolve the DNA.
3. Close the tube and incubate for 10 minutes at room temperature.
4. Briefly vortex the tube and then do a quick spin (less than 5000xg) to concentrate the liquid at the bottom.
5. Store the suspended plasmid at -20°C. The DNA is stable for at least one year from date of shipping when stored at -20°C.

Note: Plasmids are not sterile. For experiments where strict sterility is required, filtration with 0.22um filter is required.

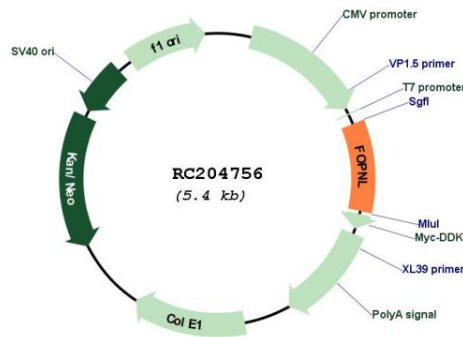
RefSeq: [NM_144600.4](#)

RefSeq Size: 2250 bp

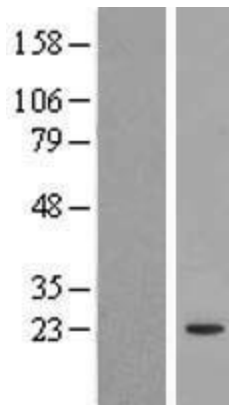
RefSeq ORF: 525 bp

Locus ID:	123811
UniProt ID:	Q96NB1
Cytogenetics:	16p13.11
Domains:	LisH
MW:	19.8 kDa
Gene Summary:	Involved in the biogenesis of cilia (PubMed:20551181). Required for the recruitment of PLK1 to centrosomes and S phase progression (PubMed:24018379).[UniProtKB/Swiss-Prot Function]

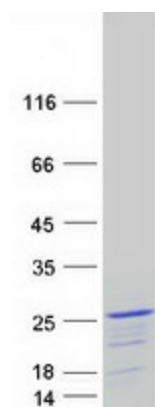
Product images:



Circular map for RC204756



Western blot validation of overexpression lysate (Cat# [LY408241]) using anti-DDK antibody (Cat# [TA50011-100]). Left: Cell lysates from untransfected HEK293T cells; Right: Cell lysates from HEK293T cells transfected with RC204756 using transfection reagent MegaTran 2.0 (Cat# [TT210002]).



Coomassie blue staining of purified FOPNL protein (Cat# [TP304756]). The protein was produced from HEK293T cells transfected with FOPNL cDNA clone (Cat# RC204756) using MegaTran 2.0 (Cat# [TT210002]).