

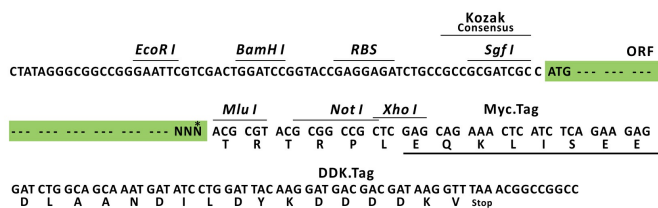
Product datasheet for RC204754L1

S100Z (NM_130772) Human Tagged Lenti ORF Clone

Product data:

Product Type:	Expression Plasmids
Product Name:	S100Z (NM_130772) Human Tagged Lenti ORF Clone
Tag:	Myc-DDK
Symbol:	S100Z
Synonyms:	Gm625; S100-zeta
Mammalian Cell Selection:	None
Vector:	pLenti-C-Myc-DDK (PS100064)
E. coli Selection:	Chloramphenicol (34 ug/mL)
ORF Nucleotide Sequence:	The ORF insert of this clone is exactly the same as(RC204754).
Restriction Sites:	SgfI-MluI
Cloning Scheme:	

Cloning sites used for ORF Shuttling:



* The last codon before the Stop codon of the ORF.

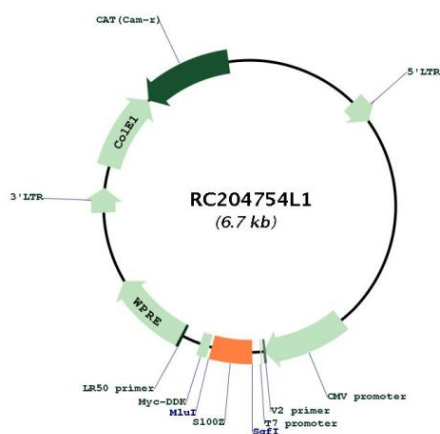
ACCN:	NM_130772
ORF Size:	297 bp



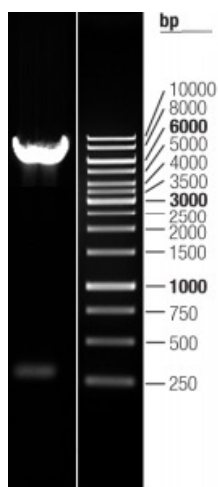
[View online »](#)

OTI Disclaimer:	The molecular sequence of this clone aligns with the gene accession number as a point of reference only. However, individual transcript sequences of the same gene can differ through naturally occurring variations (e.g. polymorphisms), each with its own valid existence. This clone is substantially in agreement with the reference, but a complete review of all prevailing variants is recommended prior to use. More info
OTI Annotation:	This clone was engineered to express the complete ORF with an expression tag. Expression varies depending on the nature of the gene.
Components:	The ORF clone is ion-exchange column purified and shipped in a 2D barcoded Matrix tube containing 10ug of transfection-ready, dried plasmid DNA (reconstitute with 100 ul of water).
Reconstitution Method:	<ol style="list-style-type: none"> 1. Centrifuge at 5,000xg for 5min. 2. Carefully open the tube and add 100ul of sterile water to dissolve the DNA. 3. Close the tube and incubate for 10 minutes at room temperature. 4. Briefly vortex the tube and then do a quick spin (less than 5000xg) to concentrate the liquid at the bottom. 5. Store the suspended plasmid at -20°C. The DNA is stable for at least one year from date of shipping when stored at -20°C.
RefSeq:	NM_130772.1
RefSeq Size:	1164 bp
RefSeq ORF:	300 bp
Locus ID:	170591
UniProt ID:	Q8WYG8
Cytogenetics:	5q13.3
MW:	11.6 kDa
Gene Summary:	Members of the S100 protein family contain 2 calcium-binding EF-hands and exhibit cell-type specific expression patterns. For additional background information on S100 proteins, see MIM 114085.[supplied by OMIM, Mar 2008]

Product images:



Circular map for RC204754L1



Double digestion of RC204754L1 using SgfI and MluI