

Product datasheet for **RC204748**

GYPE (NM_198682) Human Tagged ORF Clone

Product data:

Product Type: Expression Plasmids
Product Name: GYPE (NM_198682) Human Tagged ORF Clone
Tag: Myc-DDK
Symbol: GYPE
Synonyms: GPE; GYPA; MiIX; MNS
Mammalian Cell Selection: Neomycin
Vector: pCMV6-Entry (PS100001)
E. coli Selection: Kanamycin (25 ug/mL)
ORF Nucleotide Sequence: >RC204748 ORF sequence
Red=Cloning site Blue=ORF Green=Tags(s)

TTTTGTAATACGACTCACTATAGGGCGGCCGGAATTCGTCGACTGGATCCGGTACCGAGGAGATCTGCC
GCC**CGATCGCC**

ATGTATGGAAAAAATAATCTTTGTATTACTATTGTCAGGAATTGTGAGCATATCAGCATCAAGTACCACTG
GTGTGGCAATGCACACTTCAACCTCTTCTTCAGTCACAAAGAGTTACATCTCATCACAGACAAATGGGAT
AACACTCATTAAATGGTGGCGGATGGCTCGTGTTATTTTTGAGGTGATGCTTGTTGTTGTTGGAATGATC
ATCTTAATTTCTTACTGTATTCTGA

ACGCGTACGCGGCCGCTCGAGCAGAAACTCATCTCAGAAGAGGATCTGGCAGCAAATGATATCCTGGATT
ACAAGGATGACGACGATAAGGTTTAA

Protein Sequence: >RC204748 protein sequence
Red=Cloning site Green=Tags(s)
MYGKIIFVLLLSGIVSISASSTTGVMHTSTSSSVTKSYISSQTNGITLINWWMARVIFEVMLVVVGMII
LISYICIR

TRTRPLEQKLISEEDLAANDILDYKDDDDKV

Chromatograms: https://cdn.origene.com/chromatograms/mk6439_a11.zip

Restriction Sites: Sgfl-MluI



[View online »](#)

Cloning Scheme:



ACCN: NM_198682

ORF Size: 234 bp

OTI Disclaimer: The molecular sequence of this clone aligns with the gene accession number as a point of reference only. However, individual transcript sequences of the same gene can differ through naturally occurring variations (e.g. polymorphisms), each with its own valid existence. This clone is substantially in agreement with the reference, but a complete review of all prevailing variants is recommended prior to use. [More info](#)

OTI Annotation: This clone was engineered to express the complete ORF with an expression tag. Expression varies depending on the nature of the gene.

Components: The ORF clone is ion-exchange column purified and shipped in a 2D barcoded Matrix tube containing 10ug of transfection-ready, dried plasmid DNA (reconstitute with 100 ul of water).

- Reconstitution Method:**
1. Centrifuge at 5,000xg for 5min.
 2. Carefully open the tube and add 100ul of sterile water to dissolve the DNA.
 3. Close the tube and incubate for 10 minutes at room temperature.
 4. Briefly vortex the tube and then do a quick spin (less than 5000xg) to concentrate the liquid at the bottom.
 5. Store the suspended plasmid at -20°C. The DNA is stable for at least one year from date of shipping when stored at -20°C.

RefSeq: [NM_198682.3](#)

RefSeq Size: 1783 bp

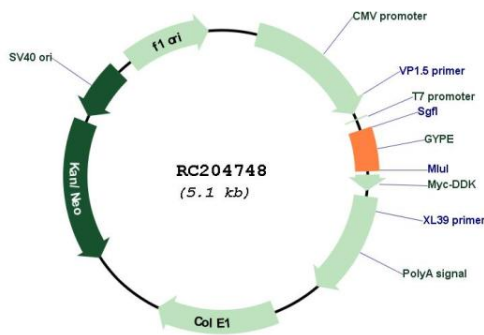
RefSeq ORF: 237 bp

Locus ID: 2996

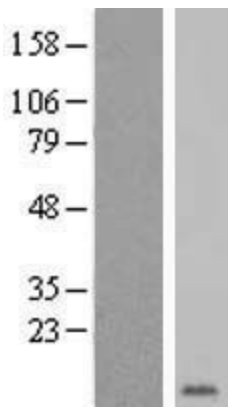
UniProt ID: [P15421](#)
 Cytogenetics: 4q31.21
 MW: 8.5 kDa

Gene Summary: The protein encoded by this gene is a sialoglycoprotein and a type I membrane protein. It is a member of a gene family with GPA and GPB genes. This encoded protein might carry the M blood group antigen. GYPA, GYPB, and GYPE are organized in tandem on chromosome 4. This gene might have derived from an ancestral gene common to the GPB gene by gene duplication. Two alternatively spliced transcript variants encoding the same protein have been described for this gene. [provided by RefSeq, Jul 2008]

Product images:



Circular map for RC204748



Western blot validation of overexpression lysate (Cat# [LY419538]) using anti-DDK antibody (Cat# [TA50011-100]). Left: Cell lysates from untransfected HEK293T cells; Right: Cell lysates from HEK293T cells transfected with [RC221758] using transfection reagent MegaTran 2.0 (Cat# [TT210002]).