

## Product datasheet for RC204746

### Surfactant protein D (SFTPD) (NM\_003019) Human Tagged ORF Clone

#### Product data:

Product Type:	Expression Plasmids
Product Name:	Surfactant protein D (SFTPD) (NM_003019) Human Tagged ORF Clone
Tag:	Myc-DDK
Symbol:	Surfactant protein D
Synonyms:	COLEC7; PSP-D; SFTP4; SP-D
Mammalian Cell Selection:	Neomycin
Vector:	pCMV6-Entry (PS100001)
E. coli Selection:	Kanamycin (25 ug/mL)
ORF Nucleotide Sequence:	>RC204746 ORF sequence Red=Cloning site Blue=ORF Green=Tags(s)

TTTTGTAATACGACTCACTATAGGGCGGCCGGAATTCGTCGACTGGATCCGGTACCGAGGAGATCTGCC  
GCC**CGATCGCC**

ATGCTGCTCTTCTCTCTCTGCACTGGTCTGCTCACACAGCCCTGGGCTACCTGGAAGCAGGAATGA  
AGACCTACTCCCACAGAACAATGCCAGTGCTGCACCCTGGTCATGTGTAGCTCAGTGGAGAGTGGCCT  
GCCTGGTCGCGATGGACGGGATGGGAGAGAGGGCCCTCGGGGCGAGAAGGGGACCCAGGTTTGCCAGGA  
GCTGCAGGGCAAGCAGGGATGCCTGGACAAGCTGGCCAGTTGGCCCAAAGGGACAATGGCTCTGTTG  
GAGAACCTGGACCAAGGGAGACTGGGCCAAGTGGACCTCCAGGACCTCCCGGTGTGCCTGGTCCAGC  
TGGAAGAGAAGTCCCCTGGGGAAGCAGGGGAACATAGGACCTCAGGGCAAGCCAGGCCAAAAGGAGAA  
GCTGGGCCCAAAGGAGAAGTAGGTGCCCCAGGCATGCAGGGCTCGGCAGGGGCAAGAGGCCCTCGCAGGCC  
CTAAGGGAGAGCGAGGTGTCCCTGGTGAGCGTGGAGTCCCTGGAACACAGGGGCAGCAGGGTCTGCTGG  
AGCCATGGGTCCCAGGGAAGTCCAGGTGCCAGGGGACCCCGGGATTGAAGGGGACAAAGGCATTCT  
GGAGACAAAGGAGCAAAGGGAGAAAGTGGGCTTCCAGATGTTGCTTCTCTGAGGCAGCAGGTTGAGGCT  
TACAGGGACAAGTACAGCACCTCCAGGCTGCTTCTCTCAGTATAAGAAAGTTGAGCTCTCCCAAATGG  
CCAAAGTGTGGGAGAGAAGATTTTCAAGACAGCAGGCTTTGTAAGAACATTTACGGAGGCACAGCTGCTG  
TGCACACAGGCTGGTGGACAGTTGGCCTCTCCAGCTGCGCCGTGAGAATGCCGCTTGCACAGCTGG  
TCGTAGCTAAGAACGAGGCTGCTTCTGAGCATGACTGATTCCAAGACAGAGGGCAAGTTCACCTACCC  
CACAGGAGAGTCCCTGGTCTATTCCAAGTGGGCCCCAGGGAAGCCCAACGATGATGGCGGTGAGAGGAC  
TGTGTGGAGATCTTACCAATGGCAAGTGAATGACAGGGCTTGTGGAGAAAAGCGTCTTGTGGTCTGCG  
AGTTC

**ACGCGT**ACGCGGCCGCTCGAGCAGAACTCATCTCAGAAGAGGATCTGGCAGCAAATGATATCCTGGATT  
ACAAGGATGACGACGATAAGGTTTAA



[View online >](#)

**Protein Sequence:** >RC204746 protein sequence  
 Red=Cloning site Green=Tags(s)

MLLFLLSALVLLTQPLGYLEAGMKTYSHRTMPSACTLVMCSSVESGLPGRDGRDGREGPRGEKGDPLPG  
 AAGQAGMPGQAGPVGPKGDNGSVGEPGPKGDTGPSGPPGPPGVPAGREGPLGKQGNIGPQKPGPKGE  
 AGPKGEVAGPMQGSAGARGLAGPKGERGVPERGVPGNTGAAGSAGAMGPQSGARGPPGLKGDKGIP  
 GDKGAKGESGLPDVASLRQQVEALQGQVQHLQAAFQYKVELFPNGQSVGEKIFKTAGFVKPFTEAQLL  
 CTQAGGQLASPRSAANAALQQLVYAKNEAFLSMTDSKTEGKFTYPTGESLVYSNWAPGKPNDDGGSED  
 CVEIFTNGKWNDRACGEKRLVVECF

TRTRPLEQKLISEEDLAANDILDYKDDDDKV

**Chromatograms:** [https://cdn.origene.com/chromatograms/mk6068\\_d10.zip](https://cdn.origene.com/chromatograms/mk6068_d10.zip)

**Restriction Sites:** SgfI-MluI

**Cloning Scheme:**



\* The last codon before the Stop codon of the ORF

**ACCN:** NM\_003019

**ORF Size:** 1125 bp

**OTI Disclaimer:** The molecular sequence of this clone aligns with the gene accession number as a point of reference only. However, individual transcript sequences of the same gene can differ through naturally occurring variations (e.g. polymorphisms), each with its own valid existence. This clone is substantially in agreement with the reference, but a complete review of all prevailing variants is recommended prior to use. [More info](#)

**OTI Annotation:** This clone was engineered to express the complete ORF with an expression tag. Expression varies depending on the nature of the gene.

**Components:** The ORF clone is ion-exchange column purified and shipped in a 2D barcoded Matrix tube containing 10ug of transfection-ready, dried plasmid DNA (reconstitute with 100 ul of water).

**Reconstitution Method:**

1. Centrifuge at 5,000xg for 5min.
2. Carefully open the tube and add 100ul of sterile water to dissolve the DNA.
3. Close the tube and incubate for 10 minutes at room temperature.
4. Briefly vortex the tube and then do a quick spin (less than 5000xg) to concentrate the liquid at the bottom.
5. Store the suspended plasmid at -20°C. The DNA is stable for at least one year from date of shipping when stored at -20°C.

**RefSeq:** [NM\\_003019.2](#)

**RefSeq Size:** 1299 bp

**RefSeq ORF:** 1128 bp

**Locus ID:** 6441

**UniProt ID:** [P35247](#)

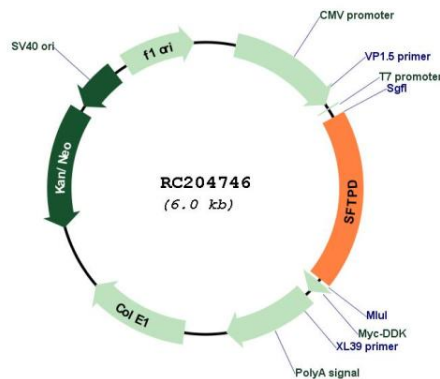
**Cytogenetics:** 10q22.3

**Protein Families:** Druggable Genome, Secreted Protein

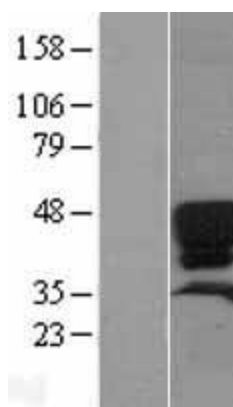
**MW:** 37.7 kDa

**Gene Summary:** The protein encoded by this gene is part of the innate immune response, protecting the lungs against inhaled microorganisms and chemicals. The encoded protein may also be involved in surfactant metabolism. [provided by RefSeq, Jul 2015]

### Product images:



Circular map for RC204746



Western blot validation of overexpression lysate (Cat# [LY401056]) using anti-DDK antibody (Cat# [TA50011-100]). Left: Cell lysates from untransfected HEK293T cells; Right: Cell lysates from HEK293T cells transfected with RC204746 using transfection reagent MegaTran 2.0 (Cat# [TT210002]).