

Product datasheet for **RC204738**

C4BPA (NM_000715) Human Tagged ORF Clone

Product data:

Product Type:	Expression Plasmids
Product Name:	C4BPA (NM_000715) Human Tagged ORF Clone
Tag:	Myc-DDK
Symbol:	C4BPA
Synonyms:	C4BP; PRP
Mammalian Cell Selection:	Neomycin
Vector:	pCMV6-Entry (PS100001)
E. coli Selection:	Kanamycin (25 ug/mL)



[View online »](#)

ORF Nucleotide Sequence:

>RC204738 ORF sequence
 Red=Cloning site Blue=ORF Green=Tags(s)

TTTTGTAATACGACTCACTATAGGGCGGCCGGGAATTCGTCGACTGGATCCGGTACCGAGGAGATCTGCC
 GCCGCGATCGCC

ATGCACCCCCAAAACTCCATCTGGGCTCTTCATAGAAAAAGAAAATGGCAGCTGGCCCTTCTCCA
 GGCTGTGGAAAGTCTCTGATCCAATTCTCTCCAATGACCTTGATCGCTGCTCTGTTGCCTGCTGTCT
 TGGCAATTGTGGTCTCCACCCACTTTATCATTGCTGCCCGATGGATATTACGTTGACTGAGACACGC
 TTCAAAGTGAAGTACTCTGAAATACACCTGCCTCCCTGGTACGTGAGATCCCATTCAACTCAGACGC
 TTACCTGTAATTCTGATGGCAATGGGTGTATAACACCTTCTGTATCTACAAACGATGCAGACACCCAGG
 AGAGTTACGTAATGGGCAAGTAGAGATTAAGACAGATTTATCTTTGGATCACAATAGAATTCAGCTGT
 TCAGAAGGATTTTCTTAATTGGCTCAACCACTAGTCGTTGTGAAGTCCAAGATAGAGGAGTTGGCTGGA
 GTCATCCTCTCCACAATGTGAAATTGTCAAGTGAAGCCTCCTCCAGACATCAGGAATGGAAGGCACAG
 CGGTGAAGAAAATTTCTACGCATACGGCTTTTCTGTACCTACAGCTGTGACCCCGCTTCTCACTTTG
 GGCCATGCCTCCATTTCTTGCACTGTGGAGAATGAAACAATAGGTGTTTGAGACCAAGCCCTCCTACCT
 GTGAAAAAATCACCTGTGCAAGCCAGATGTTTACATGGGGAATGGTCTCTGGATTTGGACCCATCTA
 TAATTACAAAGACACTATTGTGTTAAGTGCCAAAAAGGTTTTGTTCTCAGAGGCAGCAGTGAATTCAT
 TGTGATGCTGATAGCAATGGAATCCTTCTCCTCTGCTGTGAGCCCAATAGTTGTATTAATTTACCAG
 ACATTCACATGCTTCTGGGAAACATATCCTAGGCCGACAAAAGAGGATGTGTATGTTGTTGGGACTGT
 GTTAAGGTACCGTGTCTCCTGGCTACAAACCACTACAGATGAGCCTACGACTGTGATTTGTGAGAAA
 AATTTGAGATGGACCCCATACCAAGGATGTGAGGCGTTATGTTGCCCTGAACCAAGCTAAATAATGGTG
 AAATCACTCAACACAGGAAAAGTCTGCAATCACTGTGTTTATTTCTATGGAGATGAGATTTCAAT
 TTCATGTCATGAGACCAGTAGGTTTTTCACTATATGCCAAGGAGATGGCAGTGGAGTCCCGAACACCA
 TCATGTGGAGACATTTGCAATTTTCTCCTAAAATTGCCCATGGGCATTATAAACAACTAGTTCATACA
 GCTTTTTCAAAGAAGAGATTATATATGAATGTGATAAAGGCTACATTCTGGTCGGACAGGCGAAACTCTC
 CTGCAGTTATTCACACTGGTCTCAGCTCCAGCCCTCAATGTAAAGCTCTGTGTCGGAACAGAAATAGTG
 AATGGAAGGTTGTCTGTGGATAAGGATCAGTATGTTGAGCCTGAAAATGTCACCATCCAATGTGATTCTG
 GCTATGGTGTGGTGGTCCCAAAGTATCACTTGCTCTGGGAACAGAACCTGGTACCCAGAGGTGCCCAA
 GTGTGAGTGGGAGACCCCGAAGGCTGTGAACAAGTGTACAGGCAAAAGACTCATGCAGTGTCTCCCA
 AACCCAGAGGATGTGAAATGGCCCTGGAGGTATAAAGCTGTCTGGAATTTGAACAAGTGAAGTAC
 AGAGAGACAGCGCAAGACAATCCACTTTGGATAAAGAATA

ACGCGTACGCGGCCGCTCGAGCAGAAACTCATCTCAGAAGAGGATCTGGCAGCAAATGATATCCTGGATT
 ACAAGGATGACGACGATAAGGTTTAA

Protein Sequence:

>RC204738 protein sequence
 Red=Cloning site Green=Tags(s)

MHPPKTPSGALHRKRKMAAWPFSRLWKVSDPILFQMTLIAALLPAVLGNCGPPPTLSFAAPMDITLTETR
 FKTGTTLYKTYCLPGYVRSHTQTLTNCSDGEWVYNTFCIYKRCRHPGELRNGQVEIKTDL SFGSQIEFSC
 SEGFFLIGSTTSRCEVQDRGVGWSHPLPQCEIVKCKPPDIRNGRHSGEENFYAYGFSVTYSCDPRFSL
 GHASISCTVENETIGVWRPSPPTCEKITCRKPDVSHGEMVSGFGPIYNYKDTIVFKCQKGFVLRGSSV
 CDADSKWNPSPPACEPNSCINLPDIPHASWETYPRTKEDVYVVGTVLRYRCHPGYKPTTDEPTTICQK
 NLRWTPYQGEALCCPEPKLNNGEITQHRKSRPANHCVFYFGDEISFSCHETSRSFSAICQDGTWSPRTP
 SCGDICNFPKIAHGHIYKQSSSYFFKEEIIYECDKGYILVQAKLSCSYSHWSAPAPQCKALCRKPELV
 NGRLSVDKQYVEPENVTIQCDSDGYGVVGPQSITCSGNRTWYPEVPKCEWETPEGCEQVLTKRMLMQCLP
 NPEDVKMALEVYKLSLEIEQLELQRDSARQSTLDKEL

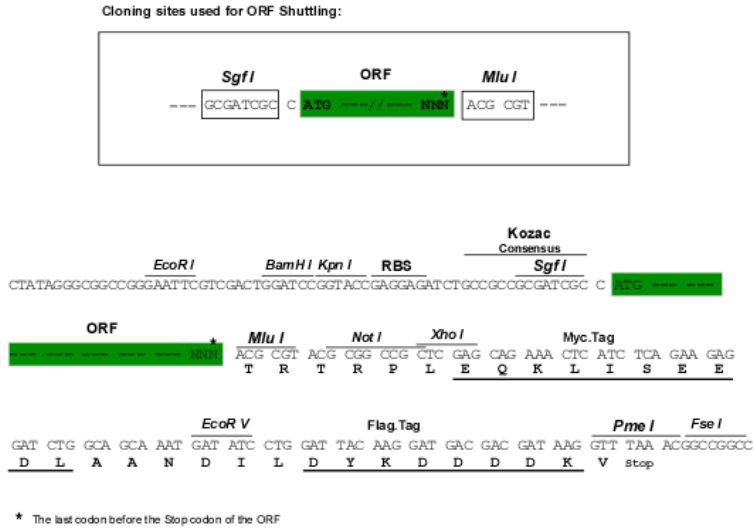
TRTRPLEQKLI SEEDLAANDILDYKDDDDKV

Chromatograms:

https://cdn.origene.com/chromatograms/mk6238_g01.zip

Restriction Sites: SgfI-MluI

Cloning Scheme:



ACCN: NM_000715

ORF Size: 1791 bp

OTI Disclaimer: The molecular sequence of this clone aligns with the gene accession number as a point of reference only. However, individual transcript sequences of the same gene can differ through naturally occurring variations (e.g. polymorphisms), each with its own valid existence. This clone is substantially in agreement with the reference, but a complete review of all prevailing variants is recommended prior to use. [More info](#)

OTI Annotation: This clone was engineered to express the complete ORF with an expression tag. Expression varies depending on the nature of the gene.

Components: The ORF clone is ion-exchange column purified and shipped in a 2D barcoded Matrix tube containing 10ug of transfection-ready, dried plasmid DNA (reconstitute with 100 ul of water).

Reconstitution Method:

1. Centrifuge at 5,000xg for 5min.
2. Carefully open the tube and add 100ul of sterile water to dissolve the DNA.
3. Close the tube and incubate for 10 minutes at room temperature.
4. Briefly vortex the tube and then do a quick spin (less than 5000xg) to concentrate the liquid at the bottom.
5. Store the suspended plasmid at -20°C. The DNA is stable for at least one year from date of shipping when stored at -20°C.

RefSeq: [NM_000715.4](#)

RefSeq Size: 2256 bp

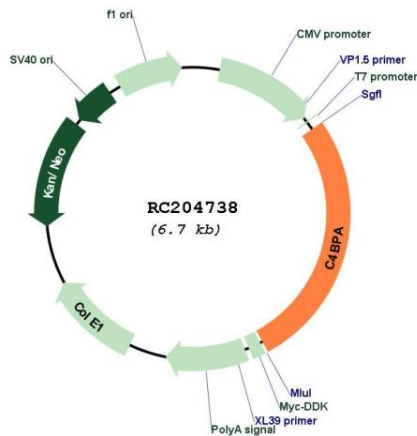
RefSeq ORF: 1794 bp

Locus ID: 722

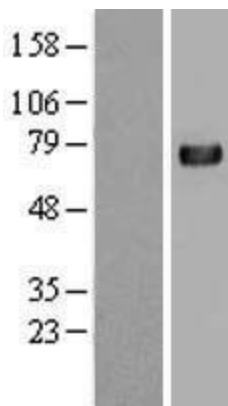
UniProt ID: [P04003](#)
Cytogenetics: 1q32.2
Domains: CCP
Protein Pathways: Complement and coagulation cascades
MW: 67 kDa

Gene Summary: This gene encodes a member of a superfamily of proteins composed predominantly of tandemly arrayed short consensus repeats of approximately 60 amino acids. Along with a single, unique beta-chain, seven identical alpha-chains encoded by this gene assemble into the predominant isoform of C4b-binding protein, a multimeric protein that controls activation of the complement cascade through the classical pathway. The genes encoding both alpha and beta chains are located adjacent to each other on human chromosome 1 in the regulator of complement activation gene cluster. Two pseudogenes of this gene are also found in the cluster. [provided by RefSeq, Jul 2008]

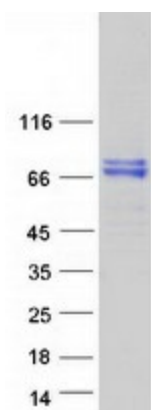
Product images:



Circular map for RC204738



Western blot validation of overexpression lysate (Cat# [LY424544]) using anti-DDK antibody (Cat# [TA50011-100]). Left: Cell lysates from untransfected HEK293T cells; Right: Cell lysates from HEK293T cells transfected with RC204738 using transfection reagent MegaTran 2.0 (Cat# [TT210002]).



Coomassie blue staining of purified C4BPA protein (Cat# [TP304738]). The protein was produced from HEK293T cells transfected with C4BPA cDNA clone (Cat# RC204738) using MegaTran 2.0 (Cat# [TT210002]).