

## Product datasheet for **RC204737**

### **SULT2A1 (NM\_003167) Human Tagged ORF Clone**

#### Product data:

Product Type:	Expression Plasmids
Product Name:	SULT2A1 (NM_003167) Human Tagged ORF Clone
Tag:	Myc-DDK
Symbol:	SULT2A1
Synonyms:	DHEA-ST; DHEA-ST8; DHEAS; HST; hSTa; ST2; ST2A1; ST2A3; STD; SULT2A3
Mammalian Cell Selection:	Neomycin
Vector:	pCMV6-Entry (PS100001)
E. coli Selection:	Kanamycin (25 ug/mL)
ORF Nucleotide Sequence:	>RC204737 ORF sequence Red=Cloning site Blue=ORF Green=Tags(s)

TTTTGTAATACGACTCACTATAGGGCGCCGGGAATTCGTCGACTGGATCCGGTACCGAGGAGATCTGCC  
GCC**CGGATCGCC**

ATGTCGGACGATTTCTTATGGTTTGAAGGCATAGCTTCCCTACTATGGGTTTCAGATCCGAAACCTTAA  
GAAAAGTACGTGATGAGTTCGTGATAAGGGATGAAGATGTAATAATTTGACTTACCCCAATCAGGAAC  
AACTGGTTGGCTGAGATTCTCGCTGATGCACTCAAGGGGGATGCCAAGTGGATCCAATCTGTGCC  
ATCTGGGAGCGATCACCTGGGTAGAGAGTGAGATTGGGTATACAGCACTCAGTAAACGGAGAGTCCAC  
GTTTATTCTCCTCCACCTCCCATCCAGTTATCCCAAGTCTTCTTCAGTTCCAAGCCAAGGTGAT  
TTATCTCATGAGAAATCCAGAGATGTTTTGGTGTCTGGTTATTTTTCTGGAAAAACATGAAGTTTATT  
AAGAAACCAAAGTCATGGGAAGAATATTTGAATGGTTTTGTCAAGGAACTGTGCTATATGGGTCATGGT  
TTGACCACATTCATGGCTGGATGCCATGAGAGAGGAGAAAACTTCTGTTACTGAGTTATGAGGAGCT  
GAAACAGGACACAGGAAGAACCATAGAGAAGATCTGTCAATTCCTGGAAAGACGTTAGAACCCGAAGAA  
CTGAACCTAATCTCAAGAACAGCTCCTTTCAGAGCATGAAAGAAAAACAAGATGTCCAATTATCCCTCC  
TGAGTGTGATTATGTAGTGGACAAAGCACAACCTCTGAGAAAAGGTGTATCTGGGGACTGGAAAAATCA  
CTTCACAGTGGCCCAAGCTGAAGACTTTGATAAATTGTTCCAAGAGAAGATGGCAGATCTTCTCGAGAG  
CTGTTCCCATGGGAA

**ACGCGT**ACGCGGGCCGCTCGAGCAGAAACTCATCTCAGAAGAGGATCTGGCAGCAAATGATATCCTGGATT  
ACAAGGATGACGACGATAAGGTTTAA



[View online »](#)

**Protein Sequence:** >RC204737 protein sequence  
 Red=Cloning site Green=Tags(s)

MSDDFLWFEGIAFPTMGFRSETLRKVRDEFVIRDEDVILTYPKSGTNWLAEILCLMHSKGDAKWIQSVPIWERSPWVESEIGYTALSETESPRLFSSHLPIQLFPKSFSSKAKVIYLMRNPRDLVSGYFFWKNMKFKKPKSWEEYFEWFCQGTVLYGSWFDHIHGWMMPMREEKNFLLLSEELKQDTGRTIEKICQFLGKTLPEELNLILKNSSFQSMKENKMSNYSLLSVDYVVDKAQLLRKGVSGDWKNHFTVAQAEDFDKLFQEKMADLPRELFPWE

TRTRPLEQKLISEEDLAANDILDYKDDDDKV

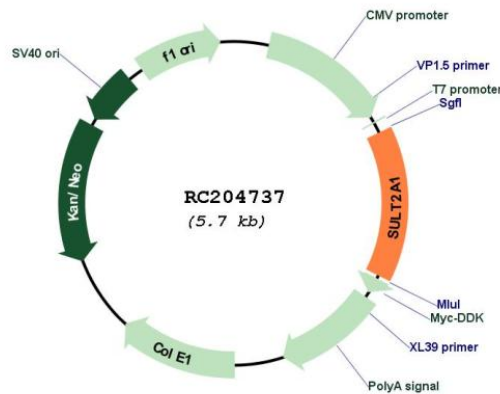
**Chromatograms:** [https://cdn.origene.com/chromatograms/mk6438\\_g12.zip](https://cdn.origene.com/chromatograms/mk6438_g12.zip)

**Restriction Sites:** SgfI-MluI

**Cloning Scheme:**

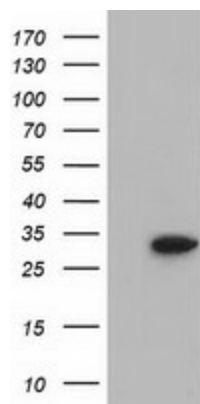


**Plasmid Map:**

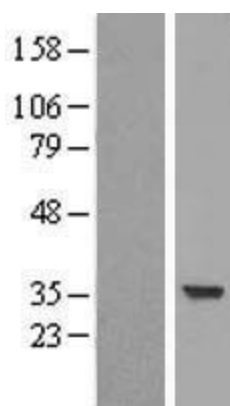


**ACCN:** NM\_003167

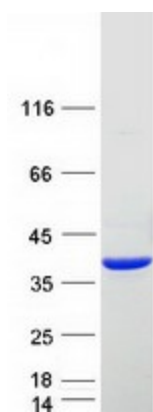
<b>ORF Size:</b>	855 bp
<b>OTI Disclaimer:</b>	The molecular sequence of this clone aligns with the gene accession number as a point of reference only. However, individual transcript sequences of the same gene can differ through naturally occurring variations (e.g. polymorphisms), each with its own valid existence. This clone is substantially in agreement with the reference, but a complete review of all prevailing variants is recommended prior to use. <a href="#">More info</a>
<b>OTI Annotation:</b>	This clone was engineered to express the complete ORF with an expression tag. Expression varies depending on the nature of the gene.
<b>Components:</b>	The ORF clone is ion-exchange column purified and shipped in a 2D barcoded Matrix tube containing 10ug of transfection-ready, dried plasmid DNA (reconstitute with 100 ul of water).
<b>Reconstitution Method:</b>	<ol style="list-style-type: none"><li>1. Centrifuge at 5,000xg for 5min.</li><li>2. Carefully open the tube and add 100ul of sterile water to dissolve the DNA.</li><li>3. Close the tube and incubate for 10 minutes at room temperature.</li><li>4. Briefly vortex the tube and then do a quick spin (less than 5000xg) to concentrate the liquid at the bottom.</li><li>5. Store the suspended plasmid at -20°C. The DNA is stable for at least one year from date of shipping when stored at -20°C.</li></ol>
<b>RefSeq:</b>	<a href="#">NM_003167.4</a>
<b>RefSeq Size:</b>	1987 bp
<b>RefSeq ORF:</b>	858 bp
<b>Locus ID:</b>	6822
<b>UniProt ID:</b>	<a href="#">Q06520</a>
<b>Cytogenetics:</b>	19q13.33
<b>MW:</b>	33.8 kDa
<b>Gene Summary:</b>	This gene encodes a member of the sulfotransferase family. Sulfotransferases aid in the metabolism of drugs and endogenous compounds by converting these substances into more hydrophilic water-soluble sulfate conjugates that can be easily excreted. This protein catalyzes the sulfation of steroids and bile acids in the liver and adrenal glands, and may have a role in the inherited adrenal androgen excess in women with polycystic ovary syndrome. [provided by RefSeq, Mar 2010]

**Product images:**

HEK293T cells were transfected with the pCMV6-ENTRY control (Cat# [PS100001], Left lane) or pCMV6-ENTRY SULT2A1 (Cat# RC204737, Right lane) cDNA for 48 hrs and lysed. Equivalent amounts of cell lysates (5 ug per lane) were separated by SDS-PAGE and immunoblotted with anti-SULT2A1 (Cat# [TA501694]). Positive lysates [LY418856] (100ug) and [LC418856] (20ug) can be purchased separately from OriGene.



Western blot validation of overexpression lysate (Cat# [LY418856]) using anti-DDK antibody (Cat# [TA50011-100]). Left: Cell lysates from untransfected HEK293T cells; Right: Cell lysates from HEK293T cells transfected with RC204737 using transfection reagent MegaTran 2.0 (Cat# [TT210002]).



Coomassie blue staining of purified SULT2A1 protein (Cat# [TP304737]). The protein was produced from HEK293T cells transfected with SULT2A1 cDNA clone (Cat# RC204737) using MegaTran 2.0 (Cat# [TT210002]).