

Product datasheet for **RC204734**

LTBR (NM_002342) Human Tagged ORF Clone

Product data:

Product Type:	Expression Plasmids
Product Name:	LTBR (NM_002342) Human Tagged ORF Clone
Tag:	Myc-DDK
Symbol:	LTBR
Synonyms:	D12S370; LT-BETA-R; TNF-R-III; TNFCR; TNFR-RP; TNFR2-RP; TNFR3; TNFRSF3
Mammalian Cell Selection:	Neomycin
Vector:	pCMV6-Entry (PS100001)
E. coli Selection:	Kanamycin (25 ug/mL)



[View online »](#)

ORF Nucleotide
Sequence:

>RC204734 ORF sequence
Red=Cloning site Blue=ORF Green=Tags(s)

TTTTGTAATACGACTCACTATAGGGCGGCCGGGAATTCGTCGACTGGATCCGGTACCGAGGAGATCTGCC
GCCGCGATCGCC

ATGCTCCTGCCTTGGGCCACCTCTGCCCCGGCCTGGCCTGGGGCCTCTGGTGTCTGGCCCTCTTCGGGC
TCCTGGCAGCATCGCAGCCCCAGGCGGTGCTCCATATGCGTCGAGAACCAGACCTGCAGGACCAGGA
AAAGGAATACTATGAGCCCCAGCACCGCATCTGCTGCTCCCGCTGCCCGCCAGGCACCTATGTCTCAGT
AAATGTAGCCGCATCCGGGACACAGTTTGTGCCACATGTGCCGAGAATTCCTACAACGAGCACTGGAAC
ACCTGACCATCTGCCAGCTGTGCCGCCCTGTGACCCAGTGATGGCCTCGAGGAGATTGCCCCCTGCAC
AAGCAAACGGAAGACCCAGTGCCGCTGCCAGCCGGGAATGTTCTGTGCTGCTGGGCCCTCGAGTGTACA
CACTGCGAGCTACTTTCTGACTGCCCGCTGGCACTGAAGCCGAGCTCAAAGATGAAGTTGGAAGGGTA
ACAACCACTGCGTCCCCGCAAGGCCGGGCACTCCAGAATACCTCTCCCCAGCGCCCGCTGCCAGCC
CCACACCAAGTGTGAGAACCAAGTCTGGTGGAGGCAGTCCAGGCACTGCCAGTCCGACACAACCTGC
AAAAATCCATTAGAGCCACTGCCCCAGAGATGTCAAGAACCATGCTGATGCTGGCCGTTCTGCTGCCAC
TGGCCTTCTTTCTGCTCCTTGCCACCGTCTTCTCTGATCTGGAAGAGCCACCTTCTCTCTGCAGGAA
ACTGGGATCGCTGCTCAAGAGGCGTCCGACGGGAGAGGGACCAATCCTGTAGCTGGAAGCTGGGAGCCT
CCGAAGGCCCATCCATACTTCCCTGACTTGGTACAGCCACTGCTACCCATTTCTGGAGATGTTTTCCCCAG
TATCCACTGGGCTCCCCGAGCCCCAGTTTTGGAGGCAGGGGTGCCGCAACAGCAGAGTCTCTGGACCT
GACCAGGGAGCCGAGTTGGAACCCGGGAGCAGAGCCAGGTGGCCACGGTACCAATGGCATTATGTC
ACCGGCGGGTCTATGACTATCACTGGCAACATCTACATCTACAATGGACCAGTACTGGGGGACCACCGG
GTCCTGGAGACCTCCAGCTACCCCGAACCTCCATAACCCATTCCCGAAGAGGGGACCCTGGCCCTCC
CGGGCTCTACACCCACCAGGAAGATGGCAAGGCTTGGCACCTAGCGGAGACAGAGCACTGTGGTGCC
ACACCCTAACAGGGGCCCAAGGAACCAATTTATCACCCATGAC

ACGCGTACGCGGCCGCTCGAGCAGAACTCATCTCAGAAGAGGATCTGGCAGCAATGATATCCTGGATT
ACAAGGATGACGACGATAAGGTTTAA

Protein Sequence:

>RC204734 protein sequence
Red=Cloning site Green=Tags(s)

MLLPWATSAPGLAWGPLVLGLFGLLAASQPQAVPPYASENQTCRDQEKEYEYEPQHRICCSRCPPGTYSVA
KCSRIRDVTCATCAENSYNEHWNLTICQLCRPCDPVMGLEEIPCTSKRKTQCRCQPGMFCAAWALECT
HCELLSDCPPGTEAELKDEVGKGNHCVCKAGHFQNTSSPSARCQPHTRCENQGLVEAAPGTAQSDTTC
KNPLEPLPPEMSGTMLMLAVLLPLAFFLLLATVFSKIWKSHPSLCKRKLGSLLKRRPQEGEPNPVAGSWEP
PKAHPYFPDLVQPLLPISGDVSPVSTGLPAAPVLEAGVPQQSPLDLTREPQLEPGEQSQVAHGTINGIHV
TGGSMITGNIYIYNGPVLGGPPGPDLPATPEPPYIPEEGDPGPPGLSTPHQEDGKAWHLAETEHCGA
TPSNRGP RNQFITHD

TRTRPLEQKLISEEDLAANDILDYKDDDDKV

Chromatograms:

https://cdn.origene.com/chromatograms/mk6178_d06.zip

Restriction Sites:

SgfI-MluI

Cloning Scheme:

Cloning sites used for ORF Shutting:



* The last codon before the Stop codon of the ORF

ACCN: NM_002342

ORF Size: 1305 bp

OTI Disclaimer: The molecular sequence of this clone aligns with the gene accession number as a point of reference only. However, individual transcript sequences of the same gene can differ through naturally occurring variations (e.g. polymorphisms), each with its own valid existence. This clone is substantially in agreement with the reference, but a complete review of all prevailing variants is recommended prior to use. [More info](#)

OTI Annotation: This clone was engineered to express the complete ORF with an expression tag. Expression varies depending on the nature of the gene.

Components: The ORF clone is ion-exchange column purified and shipped in a 2D barcoded Matrix tube containing 10ug of transfection-ready, dried plasmid DNA (reconstitute with 100 ul of water).

Reconstitution Method:

1. Centrifuge at 5,000xg for 5min.
2. Carefully open the tube and add 100ul of sterile water to dissolve the DNA.
3. Close the tube and incubate for 10 minutes at room temperature.
4. Briefly vortex the tube and then do a quick spin (less than 5000xg) to concentrate the liquid at the bottom.
5. Store the suspended plasmid at -20°C. The DNA is stable for at least one year from date of shipping when stored at -20°C.

Note: Plasmids are not sterile. For experiments where strict sterility is required, filtration with 0.22um filter is required.

RefSeq: [NM_002342.3](#)
RefSeq Size: 2283 bp

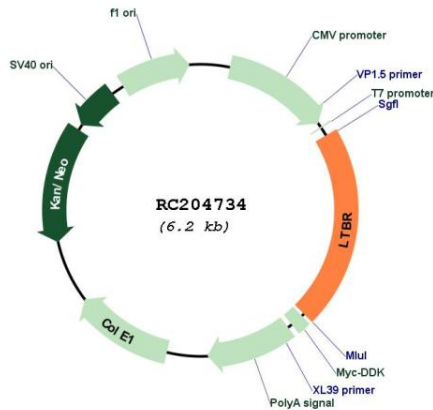
RefSeq ORF: 1308 bp

Locus ID: 4055

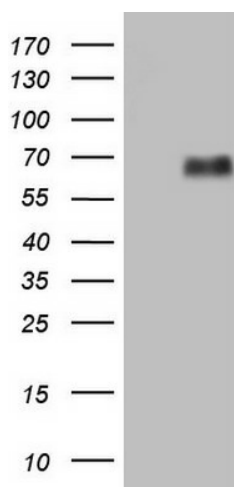
UniProt ID: [P36941](#)
Cytogenetics: 12p13.31
Domains: TNFR
Protein Families: Druggable Genome, Transmembrane
Protein Pathways: Cytokine-cytokine receptor interaction
MW: 46.7 kDa

Gene Summary: This gene encodes a member of the tumor necrosis factor receptor superfamily. The major ligands of this receptor include lymphotoxin alpha/beta and tumor necrosis factor ligand superfamily member 14. The encoded protein plays a role in signalling during the development of lymphoid and other organs, lipid metabolism, immune response, and programmed cell death. Activity of this receptor has also been linked to carcinogenesis. Alternatively spliced transcript variants encoding multiple isoforms have been observed. [provided by RefSeq, Aug 2012]

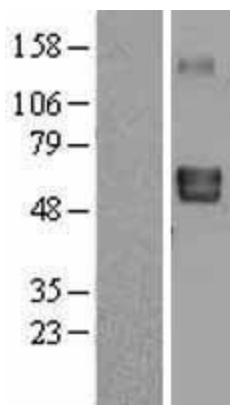
Product images:



Circular map for RC204734



HEK293T cells were transfected with the pCMV6-ENTRY control (Cat# [PS100001], Left lane) or pCMV6-ENTRY LTBR (Cat# RC204734, Right lane) cDNA for 48 hrs and lysed. Equivalent amounts of cell lysates (5 ug per lane) were separated by SDS-PAGE and immunoblotted with anti-LTBR antibody (Cat# [TA805712]). Positive lysates [LY400841] (100ug) and [LC400841] (20ug) can be purchased separately from OriGene.



Western blot validation of overexpression lysate (Cat# [LY400841]) using anti-DDK antibody (Cat# [TA50011-100]). Left: Cell lysates from untransfected HEK293T cells; Right: Cell lysates from HEK293T cells transfected with RC204734 using transfection reagent MegaTran 2.0 (Cat# [TT210002]).