

Product datasheet for **RC204729**

delta Sarcoglycan (SGCD) (NM_000337) Human Tagged ORF Clone

Product data:

Product Type:	Expression Plasmids
Product Name:	delta Sarcoglycan (SGCD) (NM_000337) Human Tagged ORF Clone
Tag:	Myc-DDK
Symbol:	delta Sarcoglycan
Synonyms:	35DAG; CMD1L; DAGD; LGMDR6; SG-delta; SGCDP; SGD
Mammalian Cell Selection:	Neomycin
Vector:	pCMV6-Entry (PS100001)
E. coli Selection:	Kanamycin (25 ug/mL)
ORF Nucleotide Sequence:	>RC204729 ORF sequence Red=Cloning site Blue=ORF Green=Tags(s)

TTTTGTAATACGACTCACTATAGGGCGCCGGGAATTCGTCGACTGGATCCGGTACCGAGGAGATCTGCC
GCC**CGATCGCC**

ATGATGCCTCAGGAGCAGTACACTCACCACCGGAGCACCATGCCTGGCTCTGTGGGGCCACAGGTATACA
AGGTGGGGATTTACGGCTGGCGGAAACGATGCCTGTATTTCTTTGTCTGCTCCTCATGATTTTAACT
GGTGAACCTGGCCATGACCATCTGGATTCTCAAAGTCATGAACCTCACAATTGATGGAATGGGAAACCTG
AGGATCACAGAAAAGGTCTAAAGCTAGAAGGAGACTCTGAATCTTACAACCTCTACGCCAAAGAAA
TCCAGTCCCGACCAGGTAATGCCCTGTACTTCAAGTCTGCCAGAAATGTTACAGTGAACATTCTCAATGA
CCAGACTAAAGTGCTAATCAGCTTATAACAGGTCCAAAAGCCGTAGAAGCTTATGGTAAAAATTTGAG
GTAAAACTGTTTCTGGAAAATTGCTCTTCTCTGACAGACAATAATGAAGTGGTAGTAGGAGCTGAAAGAT
TACGAGTTTTAGGAGCGGAGGGCACAGTGTCCCTAAATCTATAGAAACACCTAATGTCAGGGCAGACCC
CTTCAAAGAACTAAGGTTGGAGTCCCCAACCCGGTCTCTAGTGATGGAGGCCCAAAAGGAGTGGAAATC
AATGCAGAAGCTGGCAATATGGAAGCCACCTGCAGGACAGAGCTGAGACTGGAATCCAAAGATGGAGAGA
TTAAGTTAGATGCTGCGAAAATCAGGCTACCTAGACTGCCTCATGGATCTACACGCCTACAGGAACGAG
GCAGAAGGTCTTCGAGATCTGCGTCTGCGCCAATGGGAGATTATTCCTGTCTCAGGCAGGAGCTGGGTCC
ACTTGTACAGATAAACACAAGTGTCTGCCTC

ACGCGTACGCGGGCCGCTCGAGCAGAAACTCATCTCAGAAGAGGATCTGGCAGCAAATGATATCCTGGATT
ACAAGGATGACGACGATAAGGTTTAA



[View online »](#)

Protein Sequence: >RC204729 protein sequence
 Red=Cloning site Green=Tags(s)

MMPQEYTHHRSTMPGSVGPQVYKVGIVGWRKRCLYFFVLLLMILILVNLAMTIWILKVMNFTIDGMGNL
 RITEKGLKLEGDSEFLQPLYAKEIQSRPGNALYFKSARNVTVNILNDQTKVLTQLITGPKAVEAYGKKFE
 VKTVSGKLLFSADNNEVVGAERLRLVGAEGTVFPKSIETPNVRADPFKELRLESPTRSLVMEAPKGVET
 NAEAGNMEATCRTELRLLESKDGEIKLDAAKIRLPRLPHGSYTPGTTRQKVFEICVCANGRLFLSQAGAGS
 TCQINTSVCL

TRTRPLEQKLISEEDLAANDILDYKDDDDKV

Chromatograms: https://cdn.origene.com/chromatograms/mk6068_b07.zip

Restriction Sites: SgfI-MluI

Cloning Scheme:



ACCN: NM_000337

ORF Size: 870 bp

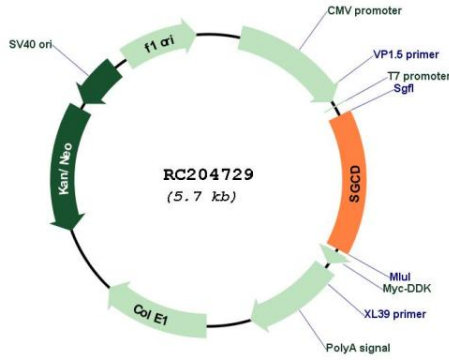
OTI Disclaimer: The molecular sequence of this clone aligns with the gene accession number as a point of reference only. However, individual transcript sequences of the same gene can differ through naturally occurring variations (e.g. polymorphisms), each with its own valid existence. This clone is substantially in agreement with the reference, but a complete review of all prevailing variants is recommended prior to use. [More info](#)

OTI Annotation: This clone was engineered to express the complete ORF with an expression tag. Expression varies depending on the nature of the gene.

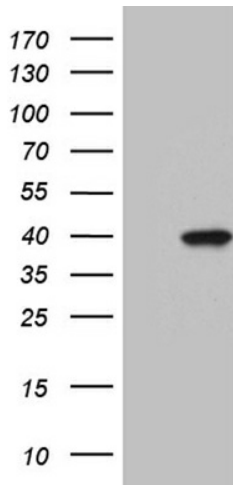
Components: The ORF clone is ion-exchange column purified and shipped in a 2D barcoded Matrix tube containing 10ug of transfection-ready, dried plasmid DNA (reconstitute with 100 ul of water).

Reconstitution Method:	<ol style="list-style-type: none">1. Centrifuge at 5,000xg for 5min.2. Carefully open the tube and add 100ul of sterile water to dissolve the DNA.3. Close the tube and incubate for 10 minutes at room temperature.4. Briefly vortex the tube and then do a quick spin (less than 5000xg) to concentrate the liquid at the bottom.5. Store the suspended plasmid at -20°C. The DNA is stable for at least one year from date of shipping when stored at -20°C.
RefSeq:	NM_000337.2
RefSeq Size:	9805 bp
RefSeq ORF:	873 bp
Locus ID:	6444
UniProt ID:	Q92629
Cytogenetics:	5q33.2-q33.3
Domains:	sarcoglycan
Protein Families:	Transmembrane
Protein Pathways:	Arrhythmogenic right ventricular cardiomyopathy (ARVC), Dilated cardiomyopathy, Hypertrophic cardiomyopathy (HCM), Viral myocarditis
MW:	32.2 kDa
Gene Summary:	<p>The protein encoded by this gene is one of the four known components of the sarcoglycan complex, which is a subcomplex of the dystrophin-glycoprotein complex (DGC). DGC forms a link between the F-actin cytoskeleton and the extracellular matrix. This protein is expressed most abundantly in skeletal and cardiac muscle. Mutations in this gene have been associated with autosomal recessive limb-girdle muscular dystrophy and dilated cardiomyopathy. Alternatively spliced transcript variants encoding distinct isoforms have been observed for this gene. [provided by RefSeq, Jul 2008]</p>

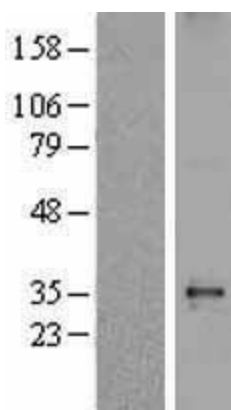
Product images:



Circular map for RC204729



HEK293T cells were transfected with the pCMV6-ENTRY control (Cat# [PS100001], Left lane) or pCMV6-ENTRY SGCD (Cat# RC204729, Right lane) cDNA for 48 hrs and lysed. Equivalent amounts of cell lysates (5 ug per lane) were separated by SDS-PAGE and immunoblotted with anti-SGCD (Cat# [TA809652]). Positive lysates [LY400125] (100ug) and [LC400125] (20ug) can be purchased separately from OriGene.



Western blot validation of overexpression lysate (Cat# [LY400125]) using anti-DDK antibody (Cat# [TA50011-100]). Left: Cell lysates from untransfected HEK293T cells; Right: Cell lysates from HEK293T cells transfected with RC204729 using transfection reagent MegaTran 2.0 (Cat# [TT210002]).