

## Product datasheet for **RC204728**

### PIGK (NM\_005482) Human Tagged ORF Clone

#### Product data:

Product Type:	Expression Plasmids
Product Name:	PIGK (NM_005482) Human Tagged ORF Clone
Tag:	Myc-DDK
Symbol:	PIGK
Synonyms:	GPI8; NEDHCAS
Mammalian Cell Selection:	Neomycin
Vector:	pCMV6-Entry (PS100001)
E. coli Selection:	Kanamycin (25 ug/mL)
ORF Nucleotide Sequence:	>RC204728 ORF sequence Red=Cloning site Blue=ORF Green=Tags(s)

TTTTGTAATACGACTCACTATAGGGCGCCGGGAATTCGTCGACTGGATCCGGTACCGAGGAGATCTGCC  
GCC**CGCATCGCC**

ATGGCCGTACCCGACAGCCTCAGCCGGGCTGCGACTGTCTTGCCAACGTGTTGCTCTTGTCTTCGGCA  
GCGTGGCCGCTAGTCATATCGAGGATCAAGCAGAACAATCTTTAGAAGTGGCCATACAAACAACATGGGC  
TGTTCTGGTGTGTACATCCCGATTCTGGTTTAATTATCGACATGTTGCAAATACCCTTTCTGTTTATAGA  
AGTGTCAAGAGGCTAGGTATTCCTGACAGTCACATTGCCTAATGCTTGCAGATGATATGGCCTGTAATC  
CTAGAAATCCCAAACCAGCTACAGTGTTTAGTCACAAGAATATGGAACAAATGTGTATGGAGATGATGT  
GGAAGTGGATTATAGAAGTTATGAGGTAACGTGGAGAATTTTTACGGGTATTAACGGGAGGATCCCA  
CCTAGTACTCCTCGGTCAAAACGTCTTCTTTCTGATGACAGAAGCAATATTCTAATTTATATGACAGGGC  
ATGGTGGAAATGGTTTCTTAAATTTCAAGATTCTGAAGAAATTACCAACATAGAAGTCCGGGATGCTTT  
TGAACAAATGTGGCAGAAAAGACGCTACAATGAGCTACTGTTTATTATTGATACTTGCCAAGGAGCATCC  
ATGTATGAACGATTTTATTCTCCTAACATAATGGCTCTAGCTAGTAGTCAAGTGGGAGAAGATCACTCT  
CGCATCAACCTGATCCTGCAATTGGAGTCCATCTTATGGATAGATACACATTTTATGTCTTGGAAATTTT  
GGAAGAAATTAACCCAGCTAGCCAAACTAATATGAATGACCTTTTTCAGGTATGTCCAAAAGTCTGTGT  
GTGTCTACTCCTGGACATCGCACTGATCTTTTTCAGAGGGATCCTAAAAATGACTGATAACTGATTCT  
TTGGAAGTGTACGAAAAGTGGAAATTACAACAGAGACTATTAATTTGCAACAGGATTCAGAAATCATGGA  
AAGCAGCTATAAGGAAGACCAGATGGATGAGAACTAATGGAACCTCTGAAATATGCTGAACAACTTCTC  
GTAGCTCAGATAATACCCAGAAACCGAAGCTGAAAGACTGGCATCCTCCTGGGGCTTTATTCTGGGAT  
TATGGGCATTATTATCATGGTTTTCTTCAAACCTTATGGAATTAAGCATATGAAGTTTCATTTTT

**ACGCGT**ACGCGGCCGCTCGAGCAGAAACTCATCTCAGAAGAGGATCTGGCAGCAATGATATCCTGGATT  
ACAAGGATGACGACGATAAGGTTTAA





**Reconstitution Method:**

1. Centrifuge at 5,000xg for 5min.
2. Carefully open the tube and add 100ul of sterile water to dissolve the DNA.
3. Close the tube and incubate for 10 minutes at room temperature.
4. Briefly vortex the tube and then do a quick spin (less than 5000xg) to concentrate the liquid at the bottom.
5. Store the suspended plasmid at -20°C. The DNA is stable for at least one year from date of shipping when stored at -20°C.

**RefSeq:** [NM\\_005482.2](#), [NP\\_005473.1](#)

**RefSeq Size:** 4626 bp

**RefSeq ORF:** 1188 bp

**Locus ID:** 10026

**UniProt ID:** [Q92643](#)

**Cytogenetics:** 1p31.1

**Domains:** Peptidase\_C13

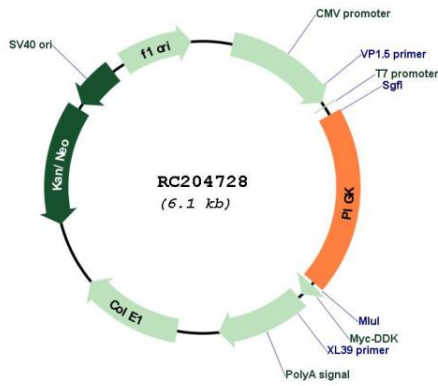
**Protein Families:** Druggable Genome, Protease, Transmembrane

**Protein Pathways:** Glycosylphosphatidylinositol(GPI)-anchor biosynthesis, Metabolic pathways

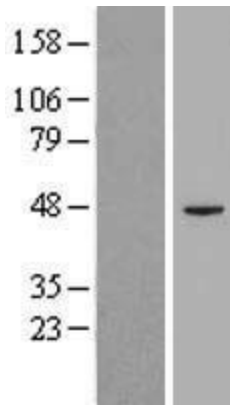
**MW:** 45.3 kDa

**Gene Summary:** This gene encodes a member of the cysteine protease family C13 that is involved in glycosylphosphatidylinositol (GPI)-anchor biosynthesis. The GPI-anchor is a glycolipid found on many blood cells and serves to anchor proteins to the cell surface. This protein is a member of the multisubunit enzyme, GPI transamidase and is thought to be its enzymatic component. GPI transamidase mediates GPI anchoring in the endoplasmic reticulum, by catalyzing the transfer of fully assembled GPI units to proteins. [provided by RefSeq, Jul 2008]

Product images:



Circular map for RC204728



Western blot validation of overexpression lysate (Cat# [LY417269]) using anti-DDK antibody (Cat# [TA50011-100]). Left: Cell lysates from untransfected HEK293T cells; Right: Cell lysates from HEK293T cells transfected with RC204728 using transfection reagent MegaTran 2.0 (Cat# [TT210002]).