

Product datasheet for **RC204727**

CLIC2 (NM_001289) Human Tagged ORF Clone

Product data:

Product Type:	Expression Plasmids
Product Name:	CLIC2 (NM_001289) Human Tagged ORF Clone
Tag:	Myc-DDK
Symbol:	CLIC2
Synonyms:	CLCNL2; CLIC2b; MRXS32; XAP121
Vector:	pCMV6-Entry (PS100001)
E. coli Selection:	Kanamycin (25 ug/mL)
Cell Selection:	Neomycin
ORF Nucleotide Sequence:	>RC204727 ORF sequence Red=Cloning site Blue=ORF Green=Tags(s)

TTTTGTAATACGACTCACTATAGGGCGCCGGAATTCGTCGACTGGATCCGGTACCGAGGAGATCTGCC
GCC**CGATCGCC**

ATGTCAGGCCTGCGGCCCGCACTCAAGTGGACCCTGAGATTGAGCTTTTGTAAAGGCTGGAAGTGATG
GAGAGAGTATTGAAACTGTCCCTTTTGCCAACGCCTTTTCATGATCCTCTGGCTTAAAGGAGTTAAATT
TAATGTGACAACGTGTGACATGACCAGAAAGCCTGAAGAATAAAGGACTTAGCCCCAGGTACCAATCCT
CGTTCCCTGGTGTATAACAAGGAGTTGAAAACAGACTTCATTAATAATGAGGAGTTTTAGAACAAACCC
TGCTCCCTCCAAGGTACCTCACCTGAGTCCCAAGTACAAGGAGTCTTTGATGTGGGCTGTAACCTCTT
TGCCAAGTTTTCTGCATACATTAAGAATACACAAAAGGAGGCAAATAAGAATTTGAAAAATCTCTGCTC
AAAGAATCAAGCGTCTGGATGACTACTTAAACACCCACTTCTGGATGAAATTGATCCAGACAGTGCTG
AGGAACCCCAAGTTTCCAGAAGACTATTCTTGGATGGGGACCAGCTAACACTGGCTGATTGTAGCTTGT
ACCCAAGCTGAACATTATTAAGTTGCTGCCAAGAAATATCGTGACTTTGACATTCCAGCAGAATTCTCA
GGAGCTGGCGTTATCTCCACAATGCCTATGCCCGTGAAGAATTTACCCACACGTGCTCTGAAGACAAAG
AAATTGAAAATACTTACGCAAATGTGGCTAAACAGAAGAGT

ACGCGTACGCGGCCGCTCGAGCAGAAACTCATCTCAGAAGAGGATCTGGCAGCAAATGATATCCTGGATT
ACAAGGATGACGACGATAAGGTTTAA



[View online »](#)

Protein Sequence: >RC204727 protein sequence
 Red=Cloning site Green=Tags(s)

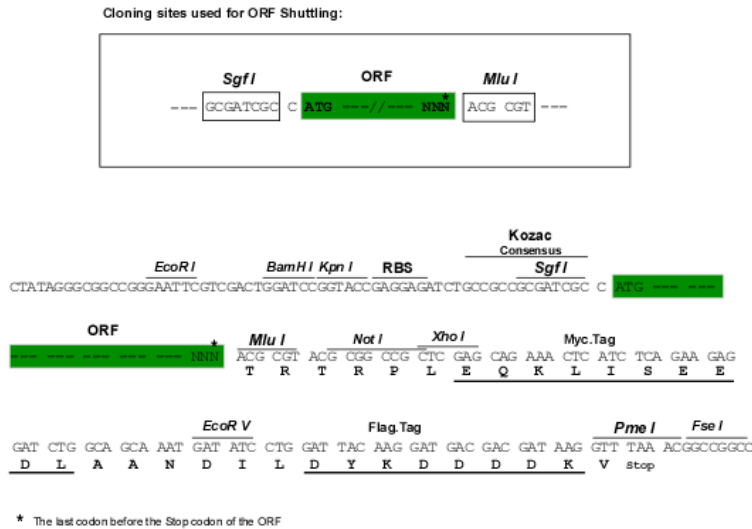
MSGLRPGTQVDPEIELFVKAGSDGESIGNCPFCQRLFMILWLKGVKFNVTVDMTRKPEELKDLAPGTPN
 PFLVYNKELKTDFFIKIEEFLEQTLAPPRYPHLSPKYKESFDVGCNLFKAFK SAYIKNTQKEANKNFEKSL
 KEFKRLDDYLNTPLLDEIDPDSAEPPVSRRLFLDGDQLTLADCSLLPKLNIKVAKKYRDFDIPA EFS
 GVWRYLHNAYAREEFTHTCPEDKEIENTYANVAKQKS

TRTRPLEQKLISEEDLAANDILDYKDDDDKV

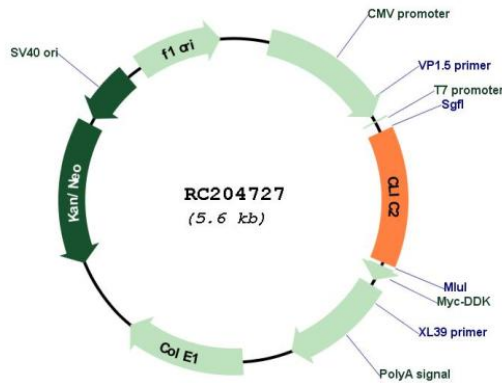
Chromatograms: https://cdn.origene.com/chromatograms/mk6439_g04.zip

Restriction Sites: SgfI-MluI

Cloning Scheme:



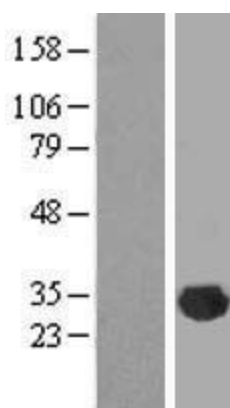
Plasmid Map:



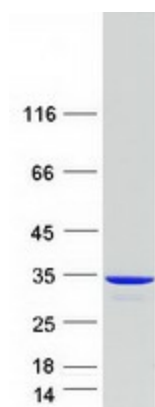
ACCN: NM_001289

ORF Size:	741 bp
OTI Disclaimer:	The molecular sequence of this clone aligns with the gene accession number as a point of reference only. However, individual transcript sequences of the same gene can differ through naturally occurring variations (e.g. polymorphisms), each with its own valid existence. This clone is substantially in agreement with the reference, but a complete review of all prevailing variants is recommended prior to use. More info
OTI Annotation:	This clone was engineered to express the complete ORF with an expression tag. Expression varies depending on the nature of the gene.
RefSeq:	NM_001289.6
RefSeq Size:	2694 bp
RefSeq ORF:	744 bp
Locus ID:	1193
UniProt ID:	Q15247
Protein Families:	Druggable Genome, Ion Channels: Other
MW:	28.4 kDa
Gene Summary:	This gene encodes a chloride intracellular channel protein. Chloride channels are a diverse group of proteins that regulate fundamental cellular processes including stabilization of cell membrane potential, transepithelial transport, maintenance of intracellular pH, and regulation of cell volume. This protein plays a role in inhibiting the function of ryanodine receptor 2. A mutation in this gene is the cause of an X-linked form of cognitive disability. [provided by RefSeq, Jul 2017]

Product images:



Western blot validation of overexpression lysate (Cat# [LY420025]) using anti-DDK antibody (Cat# [TA50011-100]). Left: Cell lysates from untransfected HEK293T cells; Right: Cell lysates from HEK293T cells transfected with RC204727 using transfection reagent MegaTran 2.0 (Cat# [TT210002]).



Coomassie blue staining of purified CLIC2 protein (Cat# [TP304727]). The protein was produced from HEK293T cells transfected with CLIC2 cDNA clone (Cat# RC204727) using MegaTran 2.0 (Cat# [TT210002]).