

Product datasheet for RC204725

HPGDS (NM_014485) Human Tagged ORF Clone

Product data:

Product Type: Expression Plasmids
Product Name: HPGDS (NM_014485) Human Tagged ORF Clone
Tag: Myc-DDK
Symbol: HPGDS
Synonyms: GSTS; GSTS1; GSTS1-1; PGD2; PGDS
Mammalian Cell Selection: Neomycin
Vector: pCMV6-Entry (PS100001)
E. coli Selection: Kanamycin (25 ug/mL)
ORF Nucleotide Sequence: >RC204725 ORF sequence
 Red=Cloning site Blue=ORF Green=Tags(s)

TTTTGTAATACGACTCACTATAGGGCGCCGGGAATTCGTCGACTGGATCCGGTACCGAGGAGATCTGCC
 GCC**CGATCGCC**

ATGCCAACTACAACTCACTTATTTTAAATAGAGGGGAGAGCAGAAATTATTCGTTACATATTTGCTT
 ATTTGGACATACAGTATGAAGACCACAGAATAGAACAAGCTGACTGGCCTGAAATCAAATCAACTCTCCC
 ATTTGGAAAAATCCCATTTTGAAGTTGATGGACTTACTCTTACCAGAGCCTAGCAATAGCAAGATAT
 TTGACCAAAAACACAGATTTGGCTGAAACACAGAAATGGAACAATGTCATGTTGATGCTATTGTGGACA
 CTCTGGATGATTCATGTCATGTTTTCTTGGGCAGAGAAAAGCAAGATGTGAAAGAGCAGATGTTCAA
 TGAGCTGCTCACGTATAATGCGCCTCATCTTATGCAAGACTTGGACACATATTTAGGGGGGAGAGAATGG
 CTATTGGTAACTCTGTAACCTGGGCAGACTTCTACTGGGAGATTTGCAGTACCACACTTTTGGTCTTTA
 AGCCTGACCTGTTAGACAACCATCCAAGGCTGGTACTTTACGGAAGAAAGTCCAAGCCATTCTGCCGT
 CGCTAACTGGATAAAAACGAAGGCCCCAAACCAAACCTC

ACGCGTACGCGGCCGCTCGAGCAGAACTCATCTCAGAAGAGGATCTGGCAGCAAATGATATCCTGGATT
 ACAAGGATGACGACGATAAGGTTTAA

Protein Sequence: >RC204725 protein sequence
 Red=Cloning site Green=Tags(s)

MPNYKLYFNMRGRAEIIIRYIFAYLDIQYEDHRIEQADWPEIKSTLPGKIPILEVDGLTLHQSLAIARY
 LTKNTDLAGNTEMEQCHVDAIVDTLDDFMSCFPWAEKKQDVKEQMFNELLTYNAPHLMQDLDTYLGREW
 LIGNSVTWADFYWEICSTLLVFKPDLNHPRLVTLRKKVQAIPAVANWIKRRPQTKL

TRTRPLEQKLISEEDLAANDILDYKDDDDKV



[View online »](#)

Chromatograms: https://cdn.origene.com/chromatograms/mk6069_a04.zip

Restriction Sites: SgfI-MluI

Cloning Scheme:



ACCN: NM_014485

ORF Size: 597 bp

OTI Disclaimer: The molecular sequence of this clone aligns with the gene accession number as a point of reference only. However, individual transcript sequences of the same gene can differ through naturally occurring variations (e.g. polymorphisms), each with its own valid existence. This clone is substantially in agreement with the reference, but a complete review of all prevailing variants is recommended prior to use. [More info](#)

OTI Annotation: This clone was engineered to express the complete ORF with an expression tag. Expression varies depending on the nature of the gene.

Components: The ORF clone is ion-exchange column purified and shipped in a 2D barcoded Matrix tube containing 10ug of transfection-ready, dried plasmid DNA (reconstitute with 100 ul of water).

Reconstitution Method:

1. Centrifuge at 5,000xg for 5min.
2. Carefully open the tube and add 100ul of sterile water to dissolve the DNA.
3. Close the tube and incubate for 10 minutes at room temperature.
4. Briefly vortex the tube and then do a quick spin (less than 5000xg) to concentrate the liquid at the bottom.
5. Store the suspended plasmid at -20°C. The DNA is stable for at least one year from date of shipping when stored at -20°C.

RefSeq: [NM_014485.3](#)

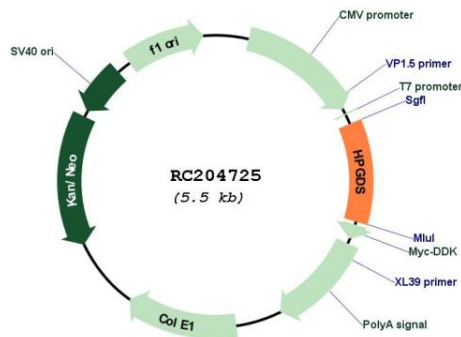
RefSeq Size: 1615 bp

RefSeq ORF: 600 bp

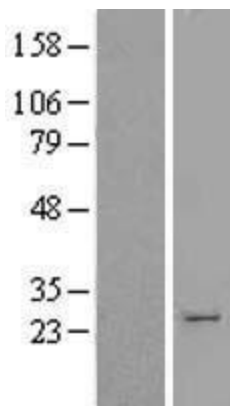
Locus ID: 27306

UniProt ID: [O60760](#)
Cytogenetics: 4q22.3
Domains: GST_N, GST_C
Protein Pathways: Arachidonic acid metabolism, Metabolic pathways
MW: 23.3 kDa
Gene Summary: Prostaglandin-D synthase is a sigma class glutathione-S-transferase family member. The enzyme catalyzes the conversion of PGH2 to PGD2 and plays a role in the production of prostanoids in the immune system and mast cells. The presence of this enzyme can be used to identify the differentiation stage of human megakaryocytes. [provided by RefSeq, Jul 2008]

Product images:



Circular map for RC204725



Western blot validation of overexpression lysate (Cat# [LY415244]) using anti-DDK antibody (Cat# [TA50011-100]). Left: Cell lysates from untransfected HEK293T cells; Right: Cell lysates from HEK293T cells transfected with RC204725 using transfection reagent MegaTran 2.0 (Cat# [TT210002]).