

Product datasheet for **RC204724**

SRPX2 (NM_014467) Human Tagged ORF Clone

Product data:

Product Type:	Expression Plasmids
Product Name:	SRPX2 (NM_014467) Human Tagged ORF Clone
Tag:	Myc-DDK
Symbol:	SRPX2
Synonyms:	BPP; CBPS; PMGX; RESDX; SRPUL
Mammalian Cell Selection:	Neomycin
Vector:	pCMV6-Entry (PS100001)
E. coli Selection:	Kanamycin (25 ug/mL)



[View online »](#)

ORF Nucleotide Sequence:

>RC204724 ORF sequence
 Red=Cloning site Blue=ORF Green=Tags(s)

TTTTGTAATACGACTCACTATAGGGCGGCCGGAATTCGTCGACTGGATCCGGTACCGAGGAGATCTGCC
 GCC**CGATCGCC**

ATGGCCAGTCAGCTAACTCAAAGAGGAGCTCTCTTTCTGCTGTTCTTCTAACTCCGGCAGTGACACCAA
 CATGGTATGCAGTTCTGGCTACTATCCGGATGAAAGCTACAATGAAGTATATGCAGAGGAGTCCACACA
 GGCTCCTGCCCTGGACTACCGAGTCCCCGATGGTGTATACATTAATATCCAGGATGGAGAAGCCACA
 TGCTACTACCGAAGGGAGGAAATTATCACAGCAGCCTGGGCACGCGTTGTGAGCTCTCCTGTGACCGGG
 GCTTTTCGATTGATTGGAAGGAGGTGGTGAATGCCTGCCAAGCCGTCGTTGGTCTGGAAGTGCCTACTG
 CAGGCAGATGAGATGCCACGCACTACCATTCACTAGTGGCACTTACACCTGCACAAATGGAGTGCTT
 CTTGACTCTCGCTGTGACTACAGCTGTTCCAGTGGCTACCACCTGGAAGGTGATCGCAGCCGAATCTGCA
 TGAAGATGGGAGATGGAGTGGAGGCGAGCCTGTATGTGTAGACATAGATCCCCCAAGATCCGCTGTCC
 CCACTCACGTGAGAAGATGGCAGAGCCAGAGAAATGACTGCTCGAGTATACTGGGACCCACCGTTGGTG
 AAAGATTCGCTGATGGTACCATACCAGGGTGCACTTCGGGGCCCTGAGCCTGGCTCTCACTTTCCCG
 AAGGAGAGCATGTGATTGTTACTGCTATGACCGAGCCTACAACCGGCCAGCTGCAAGTTCATTGT
 GAAAGTACAAGTGAAGCCTGCCAACTCTGAAACCTCCGAGCAGCGGTACCTCACCTGCACCTCAGCG
 GGGGACAACTATGGTGCCTCCTGTGAATACCACTGTGATGGCGGTTATGATCGCCAGGGGACACCCTCCC
 GGGTCTGTGAGTCCAGCCGCCAGTGGTCAAGTTCACCAATCTGTGCTCCTATGAAGATTAACGTCAA
 CGTCAACTCAGCTGCTGGTCTCTGGATCAATTCTATGAGAAACAGCGACTCCTCATCATCTCAGCTCCT
 GATCCTTCAACCGATATTATAAAATGCAGATCTCTATGCTACAGCAATCCACCTGTGGACTGGATTGCG
 GGCATGTGACCATCATTGAACTGGTGGGACAGCCACCTCAGGAGGTGGGGCGCATCCGGAGCAACAGAT
 GTCAGCCAACATCATCGAGGAGCTCAGGCAATTCAGCGCCTCACTCGCTCCTACTTCAACATGGTGTG
 ATTGACAAGCAGGATTTGACCGAGACCCTACATGGAACCTGTACCCCGAGGAAATCTTCAATTCA
 TTGATGACTACCTACTGAGCAATCAGGAGTTGACCCAGCGTCGGGAGCAAAGGGACATATGCGAG

AG**CGGACCG**ACGCGTACGCGGCCGCTCGAGCAGAACTCATCTCAGAAGAGGATCTGGCAGCAAATGATATCC
 TGGATTACAAGGATGACGACGATAAGGTTAA

Protein Sequence:

>RC204724 protein sequence
 Red=Cloning site Green=Tags(s)

MASQLTQRGALFLLFLLTPAVTPTWYAGSGYYPDESNEYEAEEVPQAPALDYRVPWRCYTLNIQDGEAT
 CYSKGGNYHSSLGTRCELSCDRGFRLIGRRSVQCLPSRRWSGTAYCRQMRCHALPFITSGTYTCTNGVL
 LDSRCDYSCSSGYHLEGDRSRICMEDGRWSGGEPVCVDIDPPKIRCPHSREKMAEPEKLTARVYWDPLV
 KDSADGTITRVTLRGPEPGSHFPEGEHVIRYAYDRAYNRASCKFIVKVQVRRCPCLKPPQHGYLTCTSA
 GDNYGASCEYHCDGGYDRQGTSPRVCQSSRQWSGSPPICAPMKINNVNSAAGLLDQFYEKQRLLIISAP
 DPSNRYKMQISMLQQSTCGLDLRHVTIIEELVGQPPQEVGRIREQQLSANIEELRQFQRLTRSYFNMVL
 IDKQIDRDYMEPVTPEEIFTFIDDYLLSNQELTQRREQRDICE

SGPTRTRPLEQKLI SEEDLAANDILDYKDDDDKV

Chromatograms:

https://cdn.origene.com/chromatograms/mk6190_e06.zip

Restriction Sites:

Sgfl-RsrII

Cloning Scheme:


ACCN: NM_014467

ORF Size: 1395 bp

OTI Disclaimer: The molecular sequence of this clone aligns with the gene accession number as a point of reference only. However, individual transcript sequences of the same gene can differ through naturally occurring variations (e.g. polymorphisms), each with its own valid existence. This clone is substantially in agreement with the reference, but a complete review of all prevailing variants is recommended prior to use. [More info](#)

OTI Annotation: This clone was engineered to express the complete ORF with an expression tag. Expression varies depending on the nature of the gene.

Components: The ORF clone is ion-exchange column purified and shipped in a 2D barcoded Matrix tube containing 10ug of transfection-ready, dried plasmid DNA (reconstitute with 100 ul of water).

Reconstitution Method:

1. Centrifuge at 5,000xg for 5min.
2. Carefully open the tube and add 100ul of sterile water to dissolve the DNA.
3. Close the tube and incubate for 10 minutes at room temperature.
4. Briefly vortex the tube and then do a quick spin (less than 5000xg) to concentrate the liquid at the bottom.
5. Store the suspended plasmid at -20°C. The DNA is stable for at least one year from date of shipping when stored at -20°C.

RefSeq: [NM_014467.3](#)

RefSeq Size: 2206 bp

RefSeq ORF: 1398 bp

Locus ID: 27286

UniProt ID: [O60687](#)

Cytogenetics: Xq22.1

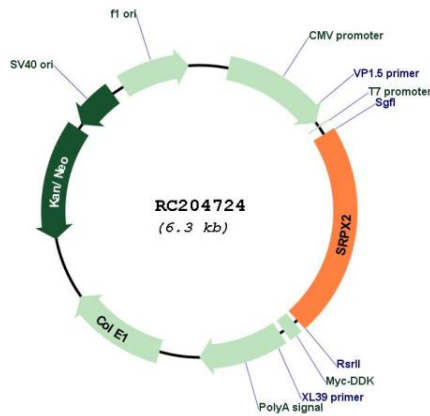
Domains: CCP, HYR

Protein Families: Druggable Genome, Secreted Protein

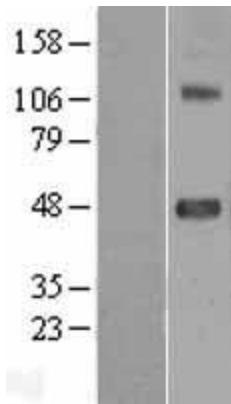
MW: 53 kDa

Gene Summary: This gene encodes a secreted protein that contains three sushi repeat motifs. The encoded protein may play a role in the development of speech and language centers in the brain. This protein may also be involved in angiogenesis. Mutations in this gene are the cause of bilateral perisylvian polymicrogyria, rolandic epilepsy, speech dyspraxia and cognitive disability. [provided by RefSeq, May 2010]

Product images:



Circular map for RC204724



Western blot validation of overexpression lysate (Cat# [LY402337]) using anti-DDK antibody (Cat# [TA50011-100]). Left: Cell lysates from untransfected HEK293T cells; Right: Cell lysates from HEK293T cells transfected with RC204724 using transfection reagent MegaTran 2.0 (Cat# [TT210002]).