

## Product datasheet for RC204722

### LDB2 (NM\_001290) Human Tagged ORF Clone

#### Product data:

Product Type:	Expression Plasmids
Product Name:	LDB2 (NM_001290) Human Tagged ORF Clone
Tag:	Myc-DDK
Symbol:	LDB2
Synonyms:	CLIM1; LDB-2; LDB1
Mammalian Cell Selection:	Neomycin
Vector:	pCMV6-Entry (PS100001)
E. coli Selection:	Kanamycin (25 ug/mL)
ORF Nucleotide Sequence:	>RC204722 ORF sequence Red=Cloning site Blue=ORF Green=Tags(s)

TTTTGTAATACGACTCACTATAGGGCGCCGGGAATTCGTCGACTGGATCCGGTACCGAGGAGATCTGCC  
GCC**CGATCGCC**

ATGTCCAGCACACCACATGACCCCTTCTATTCTTCTCCTTTTCGGCCATTTTATAGGAGGCATACACCAT  
ACATGGTACAGCCAGAGTACCGAATCTATGAGATGAACAAGAGACTGCAGTCTCGCACAGAGGATAGTGA  
CAACCTCTGGTGGGACGCCTTTGCCACTGAATTTTTGAAGATGACGCCACATTAACCCCTTCATTTTGT  
TTGGAAGATGGACAAAGCGATACACTATCGGCAGGACCCTCATCCCCGTTACTTTAGCACTGTGTTT  
AAGGAGGGGTGACCGACCTGTATTACATTCTCAAACACTCGAAAGAGTCATACCACAACATCCATCAC  
GGTGGACTGCGACCAGTGTACCATGGTCAACCAGCACGGGAAGCCATGTTTACCAAGGTATGTACAGAA  
GGCAGACTGATCTTGGAGTTCACCTTGTATGATCTCATGAGAATCAAACATGGCACTTTACCATTAGAC  
AATACCGAGAGTTAGTCCCGAGAAGCATCCTAGCCATGCATGCACAAGATCCTCAGGTCCTGGATCAGCT  
GTCCAAAAACATCACCAGGATGGGGCTAACAACTTCACCCTCAACTACCTCAGGTTGTGTGAATATTG  
GAGCCAATGCAGGAAGTATGTCGAGACATAAACTTACAACCTCAGTCCCCGAGACTGCCTGAAGACCT  
GCTTGTTCAGAAGTGGCAGAGGATGGTGGCTCCGCCAGCAGAACCACAAGGCAACCAACCAACAAACG  
GAGAAAAAGAAAAATTCACCAGCAGCACTTCCAACAGCAGCGCTGGGAACAATGCAACAGCACTGGC  
AGCAAGAAGAAGACCACAGCTGCAAACCTGAGTCTGCCAGTACCTGATGTGATGGTGGTAGGAG  
AGCCAACCTCTGATGGGAGGTGAGTTTGGGGACGAGGACGAAAGGCTAATCACTAGATTAGAAAACAGCA  
ATATGATGCGGCCAACGGCATGGACGACGAGGAGGACTTCAACAATTCACCCGCGCTGGGGAACAACAGC  
CCGTGGAACAGTAAACCTCCCGCACTCAAGAGACCAAATCAGAAAACCCCCACCCAGGCTTCCCAA

**ACGCGT**ACGCGGCCGCTCGAGCAGAACTCATCTCAGAAGAGGATCTGGCAGCAAATGATATCCTGGATT  
ACAAGGATGACGACGATAAGGTTAA



[View online »](#)

**Protein Sequence:** >RC204722 protein sequence  
Red=Cloning site Green=Tags(s)

MSSTPHDPFYSSPFGPFYRRHTPYMVQPEYRIYEMNKRLQSRTESDNLWDAFATEFFEDDATLTL SFC  
 LEDGPKRYTIGRTLIPRYFSTVFEGGVDLYYILKHSKESYHNSSITVDCDQCTMVTQH GKPMFTKVCTE  
 GRLILEFTFDDL MRIKTWHFTIRQYREL VPR SILAMHAQDPQVLDQLSKNITRMGLTNFTLNYLR LRCVIL  
 EPMQELMSRHKTYNLSPRDCLKLFLQKWQRMVAPPAEPT RQPTTKRRKRKNSTSSSTSNS SAGNNANSTG  
 SKKKTAAANLSLSSQVPDVMVVGEPTLMGGEFGDEDERLITRLENTQYDAANGMDDEEDFNNSPALGNNS  
 PWNSKPPATQETKSENPPPPQASQ

TRTRPLEQKLISEEDLAANDILDYKDDDDKV

**Chromatograms:** [https://cdn.origene.com/chromatograms/mk6178\\_h02.zip](https://cdn.origene.com/chromatograms/mk6178_h02.zip)

**Restriction Sites:** SgfI-MluI

**Cloning Scheme:**



**ACCN:** NM\_001290

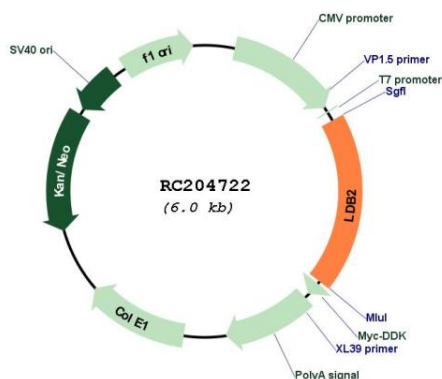
**ORF Size:** 1119 bp

**OTI Disclaimer:** Due to the inherent nature of this plasmid, standard methods to replicate additional amounts of DNA in E. coli are highly likely to result in mutations and/or rearrangements. Therefore, OriGene does not guarantee the capability to replicate this plasmid DNA. Additional amounts of DNA can be purchased from OriGene with batch-specific, full-sequence verification at a reduced cost. Please contact our customer care team at [custsupport@origene.com](mailto:custsupport@origene.com) or by calling 301.340.3188 option 3 for pricing and delivery.

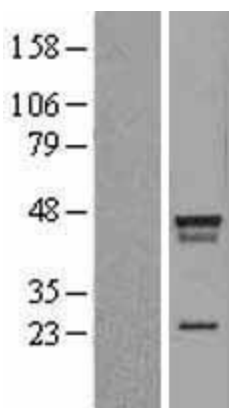
The molecular sequence of this clone aligns with the gene accession number as a point of reference only. However, individual transcript sequences of the same gene can differ through naturally occurring variations (e.g. polymorphisms), each with its own valid existence. This clone is substantially in agreement with the reference, but a complete review of all prevailing variants is recommended prior to use. [More info](#)

<b>OTI Annotation:</b>	This clone was engineered to express the complete ORF with an expression tag. Expression varies depending on the nature of the gene.
<b>Components:</b>	The ORF clone is ion-exchange column purified and shipped in a 2D barcoded Matrix tube containing 10ug of transfection-ready, dried plasmid DNA (reconstitute with 100 ul of water).
<b>Reconstitution Method:</b>	<ol style="list-style-type: none"><li>1. Centrifuge at 5,000xg for 5min.</li><li>2. Carefully open the tube and add 100ul of sterile water to dissolve the DNA.</li><li>3. Close the tube and incubate for 10 minutes at room temperature.</li><li>4. Briefly vortex the tube and then do a quick spin (less than 5000xg) to concentrate the liquid at the bottom.</li><li>5. Store the suspended plasmid at -20°C. The DNA is stable for at least one year from date of shipping when stored at -20°C.</li></ol>
<b>RefSeq:</b>	<a href="#">NM_001290.5</a>
<b>RefSeq Size:</b>	2560 bp
<b>RefSeq ORF:</b>	1122 bp
<b>Locus ID:</b>	9079
<b>UniProt ID:</b>	<a href="#">O43679</a>
<b>Cytogenetics:</b>	4p15.32
<b>Domains:</b>	LIM_bind
<b>MW:</b>	42.8 kDa
<b>Gene Summary:</b>	The protein encoded by this gene belongs to the LIM-domain binding family. Members of this family are characterized by a conserved nuclear localization sequence, an amino-terminal homodimerization domain and a carboxy-terminal LIM interaction domain. These proteins function as adapter molecules to allow assembly of transcriptional regulatory complexes. Genetic association studies suggest functions for this gene in rhegmatogenous retinal detachment and coronary artery disease. Alternative splicing results in multiple transcript variants. [provided by RefSeq, Jan 2015]

Product images:



Circular map for RC204722



Western blot validation of overexpression lysate (Cat# [LY400529]) using anti-DDK antibody (Cat# [TA50011-100]). Left: Cell lysates from untransfected HEK293T cells; Right: Cell lysates from HEK293T cells transfected with RC204722 using transfection reagent MegaTran 2.0 (Cat# [TT210002]).