

Product datasheet for **RC204717**

IGSF6 (NM_005849) Human Tagged ORF Clone

Product data:

Product Type:	Expression Plasmids
Product Name:	IGSF6 (NM_005849) Human Tagged ORF Clone
Tag:	Myc-DDK
Symbol:	IGSF6
Synonyms:	DORA
Mammalian Cell Selection:	Neomycin
Vector:	pCMV6-Entry (PS100001)
E. coli Selection:	Kanamycin (25 ug/mL)
ORF Nucleotide Sequence:	>RC204717 ORF sequence Red=Cloning site Blue=ORF Green=Tags(s)

TTTTGTAATACGACTCACTATAGGGCGGCCGGAATTCGTCGACTGGATCCGGTACCGAGGAGATCTGCC
GCC**CGATCGCC**

ATGGGGACTGCGAGCAGAAGCAACATCGCTCGCCATCTGCAAACCAATCTCATTCTATTTTGTGTCGGTG
CTGTGGGCGCCTGTACTCTCTGTGCACACAACCGTGGTACCTAGAAGTGGACTACACTCATGAGGCCGT
CACCATAAAGTGTACCTTCTCCGCAACCGGATGCCCTTCTGAGCAACCAACATGCCTGTGGTTTCGCTAC
GGTGCTCACCGGCCTGAGAACCCTGTGCTTGGACGGGTGCAAAAGTGAGGCAGACAAGTTCACAGTGAGGG
AGGCCCTCAAAGAAAACCAAGTTCCCTCACTGTAACAGAGTGACTTCAAATGACAGTGAATTTACAT
CTGTGGAATAGCATTCCCAAGTGTGCCGAAGCGAGAGCTAAACAGACAGGAGGAGGACCACACTGGTG
GTAAGAGAAATTAAGCTGCTCAGCAAGGAAGTGGGAGCTTCTGACAGCTCTTGTATCACTGCTCTCTG
TCTATGTGACCGGTGTGTGCGTGGCCTTCACTCCTCTCCAAATCAAAATCCAACCTCTAAGAAACAA
AAAAATAAAGAAGACTCACAAAAGAAGAAGAGTGCTCGGCGTATTTTTCAGGAAATTGCTCAAGAACTA
TACCATAAGAGACATGTGGAAACAAATCAGCAATCTGAGAAAGATAACAACACTTATGAAAAAGAGAG
TACTTTCCAACATGAAAGGCCA

ACGCGTACGCGGCCGCTCGAGCAGAAACTCATCTCAGAAGAGGATCTGGCAGCAAATGATATCCTGGATT
ACAAGGATGACGACGATAAGGTTTAA



[View online »](#)

- Reconstitution Method:**
1. Centrifuge at 5,000xg for 5min.
 2. Carefully open the tube and add 100ul of sterile water to dissolve the DNA.
 3. Close the tube and incubate for 10 minutes at room temperature.
 4. Briefly vortex the tube and then do a quick spin (less than 5000xg) to concentrate the liquid at the bottom.
 5. Store the suspended plasmid at -20°C. The DNA is stable for at least one year from date of shipping when stored at -20°C.

RefSeq: [NM_005849.4](#)

RefSeq Size: 1062 bp

RefSeq ORF: 726 bp

Locus ID: 10261

UniProt ID: [O95976](#)

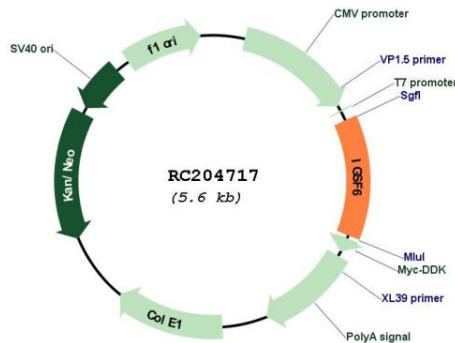
Cytogenetics: 16p12.2

Domains: IGv

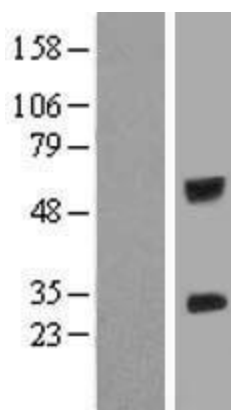
Protein Families: Transmembrane

MW: 27 kDa

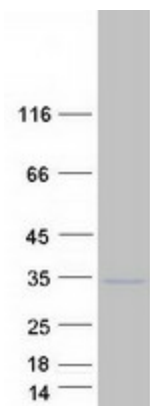
Product images:



Circular map for RC204717



Western blot validation of overexpression lysate (Cat# [LY417037]) using anti-DDK antibody (Cat# [TA50011-100]). Left: Cell lysates from untransfected HEK293T cells; Right: Cell lysates from HEK293T cells transfected with RC204717 using transfection reagent MegaTran 2.0 (Cat# [TT210002]).



Coomassie blue staining of purified IGSF6 protein (Cat# [TP304717]). The protein was produced from HEK293T cells transfected with IGSF6 cDNA clone (Cat# RC204717) using MegaTran 2.0 (Cat# [TT210002]).