

Product datasheet for **RC204713**

Apolipoprotein F (APOF) (NM_001638) Human Tagged ORF Clone

Product data:

Product Type:	Expression Plasmids
Product Name:	Apolipoprotein F (APOF) (NM_001638) Human Tagged ORF Clone
Tag:	Myc-DDK
Symbol:	Apolipoprotein F
Synonyms:	Apo-F; LTIP
Mammalian Cell Selection:	Neomycin
Vector:	pCMV6-Entry (PS100001)
E. coli Selection:	Kanamycin (25 ug/mL)
ORF Nucleotide Sequence:	>RC204713 ORF sequence Red=Cloning site Blue=ORF Green=Tags(s)

TTTTGTAATACGACTCACTATAGGGCGGCCGGAATTCGTCGACTGGATCCGGTACCGAGGAGATCTGCC
GCC**CGATCGCC**

ATGACTGGACTGTGTGGTACTCTGCTCCAGACATGCGTGGCCTCAGACTCATCATGATACCAGTTGAGC
TGCTACTTTGCTACCTCCTGCTGCACCCCTGTGGATGCCACTTCATATGGAAAGCAGACAAATGTCTTGAT
GCACTTCCCTTGTCTTGAATCCCAGACACCCTCCTCAGACCCTTGTCTGCCAATTTCTGCACCCA
AAGTCACTGCCTGGTTTCAGCCACATGGCCCTCTACCCAAGTTCTTGGTAAGCCTGGCTCTAAGGAATG
CCCTGGAGGAAGCTGGTTGTCAGGCTGATGTTTGGGCTCTACAGCTACAGCTCTACCGCCAGGGTGGTGT
GAATGCTACACAGGTCTCATCCAGCATCTCGAGGGCTCCAGAAAGGCAGAAGCACAGAGAGGAACGTG
TCAGTGAAGCCCTGGCCTCTGCTCTGCAGCTGTTAGCCAGGGAGCAGCAAAGCACAGGAAGGGTCGGGC
GCTCCCTCCCAGAGGACTGTGAGAATGAGAAGGAGCAAGCTGTGCACAATGTAGTCCAGCTGTGCTCC
AGGAGTGGGAACCTTCTACAACCTGGGCACAGCTTTGTATTATGCTACTCAAACCTGCCTGGGCAAGGCC
AGGGAACGAGGCCGAGATGGGGCCATAGATCTGGGATATGACCTTCTGATGACCATGGCTGGGATGTCAG
GGGGCCATGGGTCTAGCGATCAGTGTGCACCTAAACCTGCATTAAGGTCTGGGGTTCAGCAGTTGAT
CCAGTATTACCAAGATCAGAAAGACGCAAACATCTCTCAGCCGGAGACCACCAAGGAGGGTTTGAGGGCC
ATCTCAGATGTGAGTGACTTGGAAAGAACTACTCTGGCTTCTTTTCATATCAGAAGTAGTAAGTTTCAG
CTCCCTACTGGGGTGGCCATAATCAAGAGCTATGACTTAGATCTGGGGCTGGGAGTCTTGAGATA

ACGCGTACGCGGCCGCTCGAGCAGAAACTCATCTCAGAAGAGGATCTGGCAGCAAATGATATCCTGGATT
ACAAGGATGACGACGATAAGGTTTAA



[View online »](#)

Protein Sequence: >RC204713 protein sequence
Red=Cloning site Green=Tags(s)

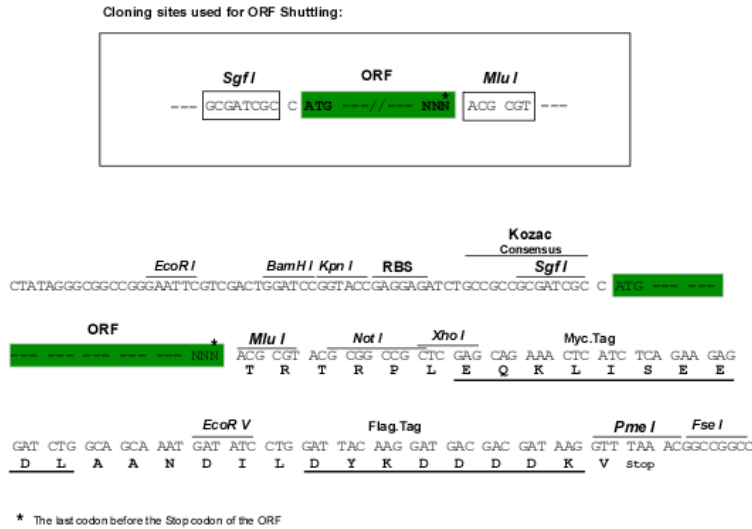
MTGLCGYSAPDMRGLRLIMIPVELLLCYLLHPVDATSYGKQTNVLMHFPLSLESQTPSSDPLSCQFLHP
 KSLPGFSHMAPLPKFLVSLALRNAL EEAGCQADVWALQLQLYRQGGVNATQVLIQHRLGLQKGRSTERNV
 SVEALASALQLLAREQQSTGRVGRSLPTEDCENEKEQAVHNVVQLLPGVGTFYNLGTALYYATQNCLGKA
 RERGRDGAIDLGYDLLMTMAGMSGGPMGLAISAAKPALRSGVQQLIQYYQDQKDANISQPETTKEGLRA
 ISDVSDLEETTTLASFISEVVSSAPYWGWAIIKSYDLDPGAGSLEI

TRTRPLEQKLISEEDLAANDILDYKDDDDKV

Chromatograms: https://cdn.origene.com/chromatograms/mk6171_e10.zip

Restriction Sites: SgfI-MluI

Cloning Scheme:



ACCN: NM_001638

ORF Size: 978 bp

OTI Disclaimer: The molecular sequence of this clone aligns with the gene accession number as a point of reference only. However, individual transcript sequences of the same gene can differ through naturally occurring variations (e.g. polymorphisms), each with its own valid existence. This clone is substantially in agreement with the reference, but a complete review of all prevailing variants is recommended prior to use. [More info](#)

OTI Annotation: This clone was engineered to express the complete ORF with an expression tag. Expression varies depending on the nature of the gene.

Components: The ORF clone is ion-exchange column purified and shipped in a 2D barcoded Matrix tube containing 10ug of transfection-ready, dried plasmid DNA (reconstitute with 100 ul of water).

Reconstitution Method:

1. Centrifuge at 5,000xg for 5min.
2. Carefully open the tube and add 100ul of sterile water to dissolve the DNA.
3. Close the tube and incubate for 10 minutes at room temperature.
4. Briefly vortex the tube and then do a quick spin (less than 5000xg) to concentrate the liquid at the bottom.
5. Store the suspended plasmid at -20°C. The DNA is stable for at least one year from date of shipping when stored at -20°C.

RefSeq: [NM_001638.4](#)

RefSeq Size: 1720 bp

RefSeq ORF: 981 bp

Locus ID: 319

UniProt ID: [Q13790](#)

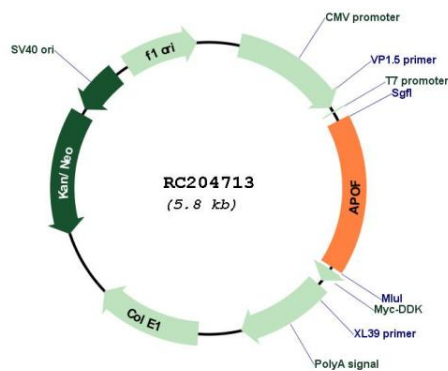
Cytogenetics: 12q13.3

Protein Families: Druggable Genome, Secreted Protein

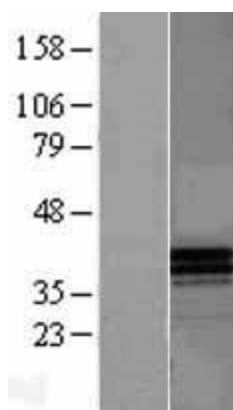
MW: 35.4 kDa

Gene Summary: The product of this gene is one of the minor apolipoproteins found in plasma. This protein forms complexes with lipoproteins and may be involved in transport and/or esterification of cholesterol. [provided by RefSeq, Jul 2008]

Product images:



Circular map for RC204713



Western blot validation of overexpression lysate (Cat# [LY400616]) using anti-DDK antibody (Cat# [TA50011-100]). Left: Cell lysates from untransfected HEK293T cells; Right: Cell lysates from HEK293T cells transfected with RC204713 using transfection reagent MegaTran 2.0 (Cat# [TT210002]).