

Product datasheet for **RC204710**

GRO gamma (CXCL3) (NM_002090) Human Tagged ORF Clone

Product data:

Product Type: Expression Plasmids
Product Name: GRO gamma (CXCL3) (NM_002090) Human Tagged ORF Clone
Tag: Myc-DDK
Symbol: GRO gamma
Synonyms: CINC-2b; GRO3; GROg; MIP-2b; MIP2B; SCYB3
Mammalian Cell Selection: Neomycin
Vector: pCMV6-Entry (PS100001)
E. coli Selection: Kanamycin (25 ug/mL)
ORF Nucleotide Sequence: >RC204710 representing NM_002090
Red=Cloning site Blue=ORF Green=Tags(s)

TTTTGTAATACGACTCACTATAGGGCGGCCGGAATTCGTCGACTGGATCCGGTACCGAGGAGATCTGCC
GCC**CGGATCGCC**

ATGGCCACGCCACGCTCTCCGCCGCCCCAGCAATCCCCGGCTCCTGCGGGTGGCGCTGCTGCTCCTGC
TCCTGGTGGCCGACCCGGCGCGCAGCAGGAGCGTCCGTGGTCACTGAACTGCGCTGCCAGTGCTTGA
GACTGCAGGGAATCACCTCAAGAACATCAAAGTGTGAATGTAAGGTCCCCGGACCCACTGCGCC
CAAACCGAAGTCATAGCCACACTCAAGAATGGGAAGAAAGCTTGTCTCAACCCGCATCCCCATGGTTC
AGAAAATCATCGAAAAGATACTGAACAAGGGGAGCACCAAC

AG**CGGACCG**ACGCGTACGCGGCCGCTCGAGCAGAACTCATCTCAGAAGAGGATCTGGCAGCAAATGATATCC
TGGATTACAAGGATGACGACGATAAGGTTAA

Protein Sequence: >RC204710 representing NM_002090
Red=Cloning site Green=Tags(s)

MAHATLSAAPSNPRLRLVALLLLLLVAASRRRAAGASVVTELRCQCLQTLQGIHLKNIQSVNVRSPGPHCA
QTEVIATLKNKKAACLNPAAPMVKIIEKILNKGSTN

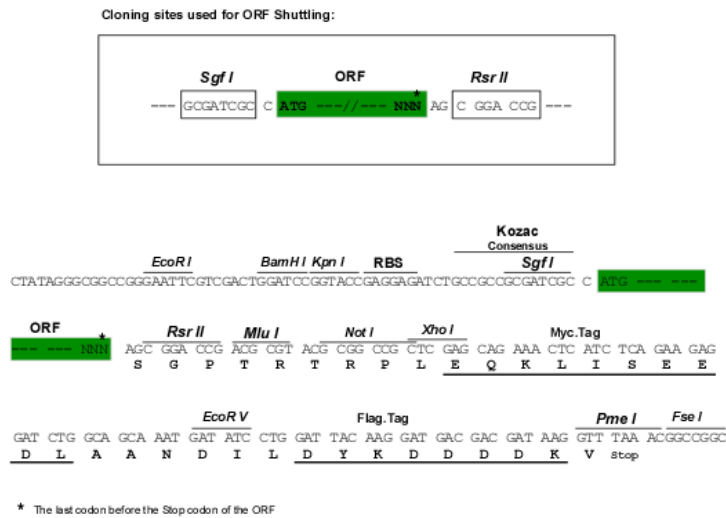
SGPTRTRRLE**QKL**ISEEDLAANDILDYKDDDDKV

Chromatograms: https://cdn.origene.com/chromatograms/mk8112_h02.zip

Restriction Sites: Sgfl-RsrII



[View online »](#)

Cloning Scheme:


ACCN: NM_002090

ORF Size: 321 bp

OTI Disclaimer: The molecular sequence of this clone aligns with the gene accession number as a point of reference only. However, individual transcript sequences of the same gene can differ through naturally occurring variations (e.g. polymorphisms), each with its own valid existence. This clone is substantially in agreement with the reference, but a complete review of all prevailing variants is recommended prior to use. [More info](#)

OTI Annotation: This clone was engineered to express the complete ORF with an expression tag. Expression varies depending on the nature of the gene.

Components: The ORF clone is ion-exchange column purified and shipped in a 2D barcoded Matrix tube containing 10ug of transfection-ready, dried plasmid DNA (reconstitute with 100 ul of water).

Reconstitution Method:

1. Centrifuge at 5,000xg for 5min.
2. Carefully open the tube and add 100ul of sterile water to dissolve the DNA.
3. Close the tube and incubate for 10 minutes at room temperature.
4. Briefly vortex the tube and then do a quick spin (less than 5000xg) to concentrate the liquid at the bottom.
5. Store the suspended plasmid at -20°C. The DNA is stable for at least one year from date of shipping when stored at -20°C.

RefSeq: [NM_002090.3](#)

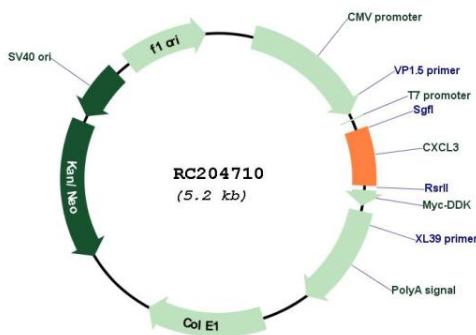
RefSeq Size: 1166 bp

RefSeq ORF: 324 bp

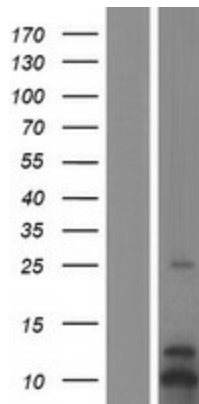
Locus ID: 2921

UniProt ID: [P19876](#)
Cytogenetics: 4q13.3
Protein Families: Druggable Genome, Secreted Protein
Protein Pathways: Chemokine signaling pathway, Cytokine-cytokine receptor interaction
MW: 11.2 kDa
Gene Summary: This antimicrobial gene encodes a member of the CXC subfamily of chemokines. The encoded protein is a secreted growth factor that signals through the G-protein coupled receptor, CXC receptor 2. This protein plays a role in inflammation and as a chemoattractant for neutrophils. [provided by RefSeq, Sep 2014]

Product images:



Circular map for RC204710



Western blot validation of overexpression lysate (Cat# [LY419539]) using anti-DDK antibody (Cat# [TA50011-100]). Left: Cell lysates from untransfected HEK293T cells; Right: Cell lysates from HEK293T cells transfected with RC204710 using transfection reagent MegaTran 2.0 (Cat# [TT210002]).