

## Product datasheet for RC204706

### BLZF1 (NM\_003666) Human Tagged ORF Clone

#### Product data:

Product Type:	Expression Plasmids
Product Name:	BLZF1 (NM_003666) Human Tagged ORF Clone
Tag:	Myc-DDK
Symbol:	BLZF1
Synonyms:	GOLGIN-45; JEM-1; JEM-1s; JEM1
Mammalian Cell Selection:	Neomycin
Vector:	pCMV6-Entry (PS100001)
E. coli Selection:	Kanamycin (25 ug/mL)
ORF Nucleotide Sequence:	>RC204706 ORF sequence Red=Cloning site Blue=ORF Green=Tags(s)

TTTTGTAATACGACTCACTATAGGGCGCCGGAATTCGTCGACTGGATCCGGTACCGAGGAGATCTGCC  
GCC**CGATCGCC**

ATGACTACTAAAAATTTAGAAACCAAAGTCACCGTTACTTCATCCCCAATCCGAGGAGCAGGAGATGGAA  
TGGAAACTGAGGAACCACTAAATCTGTTGAAGTTACCTCCGAGTCCAATCTAGAAAGCATCATAGTCT  
TCAGAGTCCATGGAAGAAAGCAGTTCATCAGAGAGCCAGGAGTTCTTCAGCTAGGGAAAATGCTCACT  
GAAAAAGCAATGGAAGTTAAAGCTGTAAGAATATTAGTCCCAAAGCTGTATAACTCATGATATCCCCA  
ACAAAAATACAAAGGTTAAGTCTCTGGGACATCATAAAGGAGAATTCCTTGGTCAGTCAGAGGGAGTTAT  
AGAACCTAATAAGGAACCTCAGAGGTAAGAATGTATTGGAAAAGCTCAAGAATTCGAAAGAAGTTA  
CTACAGGACAAAGAAGGTCTTTCAAACAGCTCCGTGTACAGACAGAGGTAATCGTGAGTTAAAAAAGT  
TACTGGTGGCTTCTGTTGGGGATGATCTTCAGTATCACTTTGAACGTCTAGCCCGTGAGAAAAATCAGCT  
TATTTTAGAAAAATGAAGCCCTAGGTCGAAACACAGCTCAGCTTTCTGAACAGTTAGAAGTATGTCAATA  
CAGTGTGATGATGGCGAAGTAAATTCCTTGCAAGCAGGGTAATGGCAGATGAGTTAACCAACTCAAGAG  
CAGCTTTACAGCGTCAAACCGTGATGCACACGGGGCTATACAAGATCTCCTAAGTGAACGGGAACAGTT  
TCGTCAAGAAATGATAGCTACCCAGAAATATTGGAGGAGCTCTAGTTTCCTTGAATGGGGAAGAGAG  
CAAACCTTACTCCCCTAGTGTACAACCCACAGCAGCAGAGCTAGCATTAAACAAATCACAAAGTTGGCAA  
AAGCAGTAAATTCATCTTCTGGGAAATGTTGGCATTAAACAATCAAAAAAAGATTCCATCAACAGTTGA  
ATTCTGCAGCACCCAGCTGAGAAAAATGGCTGAAACGGTTCTAAGAATTTTAGATCCAGTTACCTGCAAA  
GAGAGTTCACCTGATAATCCATTTTTGAGTCTTCACCAACCACCTTACTTGCTACAAAGAAAAATATTG  
GACGATTCATCCCTATACTAGATATGAAAATATAACTTTCAATTGCTGCAATCACTGCCGGGAGAACT  
GATTGCCCTT

**ACGCGT**ACGCGGCCGCTCGAGCAGAAACTCATCTCAGAAGAGGATCTGGCAGCAATGATATCCTGGATT  
ACAAGGATGACGACGATAAGGTTTAA



**Protein Sequence:** >RC204706 protein sequence  
Red=Cloning site Green=Tags(s)

MTTKNLETKVTVTSSPIRGAGDGMETEEPPKSVEVTSGVQSRKHSLQSPWKAVPSESPGVLQLGKMLT  
 EKAMEVKAVRILVPKAAITHDIPNKNTKVKSLGHHKGEFLGQSEGVIEPNKELSEVKNVLEKLKNSERRL  
 LQDKEGLSNQLRVQTEVNRELKLLVASVGDDLQYHFERLAREKNQLILENEALGRNTAQLSEQLERMSI  
 QCDVWRSKFLASRVMADEL TNSRAALQRQNRDAHGAIQDLLSEREQFRQEMIAIQKLEELLVSLQWGRE  
 QTYSPSVQPHSTAEALALTNHKLAKAVNSHLLGNVGINNQKKIPSTVEFCSTPAEKMAETVLRILDPTCK  
 ESSPDNPFESSPTLLLATKKNIGRFHPYTRYENITFNCCNHCRCGELIAL

TRTRPLEQKLISEEDLAANDILDYKDDDDKV

**Chromatograms:** [https://cdn.origene.com/chromatograms/mk6248\\_a10.zip](https://cdn.origene.com/chromatograms/mk6248_a10.zip)

**Restriction Sites:** SgfI-MluI

**Cloning Scheme:**



**ACCN:** NM\_003666

**ORF Size:** 1200 bp

**OTI Disclaimer:** The molecular sequence of this clone aligns with the gene accession number as a point of reference only. However, individual transcript sequences of the same gene can differ through naturally occurring variations (e.g. polymorphisms), each with its own valid existence. This clone is substantially in agreement with the reference, but a complete review of all prevailing variants is recommended prior to use. [More info](#)

**OTI Annotation:** This clone was engineered to express the complete ORF with an expression tag. Expression varies depending on the nature of the gene.

**Components:** The ORF clone is ion-exchange column purified and shipped in a 2D barcoded Matrix tube containing 10ug of transfection-ready, dried plasmid DNA (reconstitute with 100 ul of water).

**Reconstitution Method:**

1. Centrifuge at 5,000xg for 5min.
2. Carefully open the tube and add 100ul of sterile water to dissolve the DNA.
3. Close the tube and incubate for 10 minutes at room temperature.
4. Briefly vortex the tube and then do a quick spin (less than 5000xg) to concentrate the liquid at the bottom.
5. Store the suspended plasmid at -20°C. The DNA is stable for at least one year from date of shipping when stored at -20°C.

**RefSeq:** [NM\\_003666.3](#)

**RefSeq Size:** 2344 bp

**RefSeq ORF:** 1203 bp

**Locus ID:** 8548

**UniProt ID:** [Q9H2G9](#)

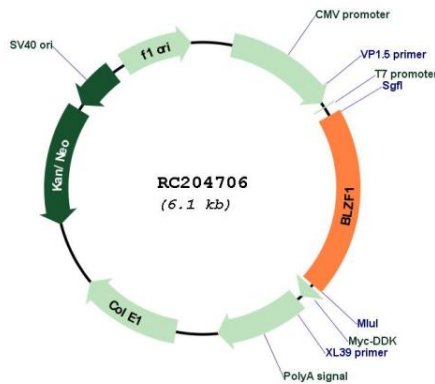
**Cytogenetics:** 1q24.2

**Protein Families:** Transcription Factors

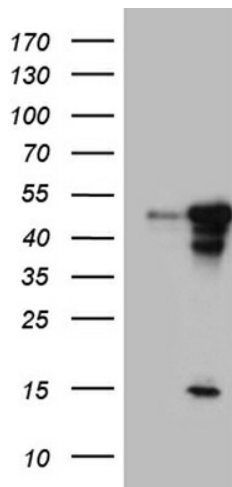
**MW:** 44.9 kDa

**Gene Summary:** Required for normal Golgi structure and for protein transport from the endoplasmic reticulum (ER) through the Golgi apparatus to the cell surface.[UniProtKB/Swiss-Prot Function]

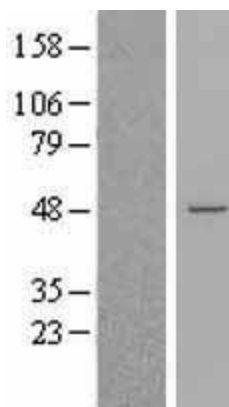
**Product images:**



Circular map for RC204706



HEK293T cells were transfected with the pCMV6-ENTRY control (Cat# [PS100001], Left lane) or pCMV6-ENTRY BLZF1 (Cat# RC204706, Right lane) cDNA for 48 hrs and lysed. Equivalent amounts of cell lysates (5 ug per lane) were separated by SDS-PAGE and immunoblotted with anti-BLZF1 (Cat# [TA809322])(1:2000). Positive lysates [LY418515] (100ug) and [LC418515] (20ug) can be purchased separately from OriGene.



Western blot validation of overexpression lysate (Cat# [LY418515]) using anti-DDK antibody (Cat# [TA50011-100]). Left: Cell lysates from untransfected HEK293T cells; Right: Cell lysates from HEK293T cells transfected with RC204706 using transfection reagent MegaTran 2.0 (Cat# [TT210002]).