

Product datasheet for **RC204705**

MYF6 (NM_002469) Human Tagged ORF Clone

Product data:

Product Type:	Expression Plasmids
Product Name:	MYF6 (NM_002469) Human Tagged ORF Clone
Tag:	Myc-DDK
Symbol:	MYF6
Synonyms:	bHLHc4; CNM3; MRF4; myf-6
Mammalian Cell Selection:	Neomycin
Vector:	pCMV6-Entry (PS100001)
E. coli Selection:	Kanamycin (25 ug/mL)
ORF Nucleotide Sequence:	>RC204705 ORF sequence Red=Cloning site Blue=ORF Green=Tags(s)

TTTTGTAATACGACTCACTATAGGGCGGCCGGAATTCGTCGACTGGATCCGGTACCGAGGAGATCTGCC
GCC**CGATCGCC**

ATGATGATGGACCTTTTTGAACTGGCTCCTATTTCTTCTACTTGGATGGGGAAAATGTTACTCTGCAGC
CATTAGAAGTGGCAGAAGGCTCTCCTTTGTATCCAGGGAGTGATGGTACCTTGCCCCCTGCCAGGACCA
AATGCCCCGGAAGCGGGGAGCGACAGCAGCGGAGAGGAACATGTCTGGCGCCCCGGGCTGCAGCCT
CCACACTGCCCGCCAGTGTCTGATCTGGCTTGCAAGACCTGCAAGAGAAAATCTGCCCCACTGACC
GGCGAAAAGCCGCCACCCTGCGCGAAAGGAGGAGCTAAAGAAAATCAACGAGGCCTTCGAGGCACTGAA
GCGGCGAACTGTGGCCAACCCCAACCAGAGGCTGCCAAGGTGGAGATTCTGCGGAGCGCCATCAGCTAT
ATTGAGCGGCTGCAGGACCTGCTGCACCGCTGGATCAGCAGGAGAAGATGCAGGAGCTGGGGTGGACC
CCTTCAGCTACAGACCCAAACAAGAAAATCTTGAGGGTGGGATTTCTGCGCACCTGCAGCTCCCAGTG
GCCAAGTGTTCGATCATTCCAGGGGCTCGTGATAACGGCTAAGGAAGGAGGACCAAGTATTGATTTCG
TCAGCCTCGAGTAGCCTTCGATGCCTTTCTCCATCGTGGACAGTATTTCTCGGAGAACGCCAACTCC
CTGCGTGGAGGAAGTGGTGGAGAAG

ACGCGTACGCGGCCGCTCGAGCAGAACTCATCTCAGAAGAGGATCTGGCAGCAAATGATATCCTGGATT
ACAAGGATGACGACGATAAGGTTTAA



[View online »](#)

Protein Sequence: >RC204705 protein sequence
Red=Cloning site Green=Tags(s)

MMMDLFETGSYFFYLDGENVTLQPLEVAEGSPLYPGSDGTLSPCQDQMPPEAGSDSSGEEHVLAPPGLQP
 PHCPGQCLIWACKTCKRKSAPTDRRKAATLRERRRLKLINEAFEALKRRTVANPNQRLPKVEILRSAISY
 IERLQDLLHRLDQEQMQLGVDPFSYRPKQENLEGADFLRTCSSQWPSVSDHSRGLVITAKEGGASIDS
 SASSSLRCLSSIVDSISSEERKLPVVEEVEK

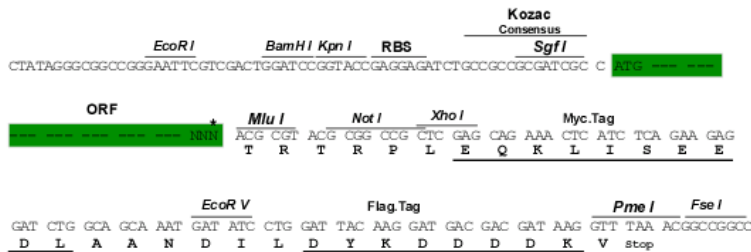
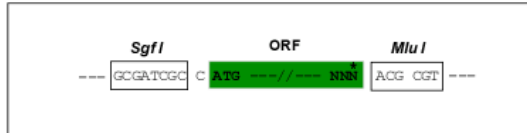
TRTRPLEQKLISEEDLAANDILDYKDDDDKV

Chromatograms: https://cdn.origene.com/chromatograms/mk6171_b11.zip

Restriction Sites: SgfI-MluI

Cloning Scheme:

Cloning sites used for ORF Shuttling:



* The last codon before the Stop codon of the ORF

ACCN: NM_002469

ORF Size: 726 bp

OTI Disclaimer: The molecular sequence of this clone aligns with the gene accession number as a point of reference only. However, individual transcript sequences of the same gene can differ through naturally occurring variations (e.g. polymorphisms), each with its own valid existence. This clone is substantially in agreement with the reference, but a complete review of all prevailing variants is recommended prior to use. [More info](#)

OTI Annotation: This clone was engineered to express the complete ORF with an expression tag. Expression varies depending on the nature of the gene.

Components: The ORF clone is ion-exchange column purified and shipped in a 2D barcoded Matrix tube containing 10ug of transfection-ready, dried plasmid DNA (reconstitute with 100 ul of water).

Reconstitution Method:

1. Centrifuge at 5,000xg for 5min.
2. Carefully open the tube and add 100ul of sterile water to dissolve the DNA.
3. Close the tube and incubate for 10 minutes at room temperature.
4. Briefly vortex the tube and then do a quick spin (less than 5000xg) to concentrate the liquid at the bottom.
5. Store the suspended plasmid at -20°C. The DNA is stable for at least one year from date of shipping when stored at -20°C.

Note: Plasmids are not sterile. For experiments where strict sterility is required, filtration with 0.22um filter is required.

RefSeq: [NM_002469.3](#)

RefSeq Size: 1342 bp

RefSeq ORF: 729 bp

Locus ID: 4618

UniProt ID: [P23409](#)

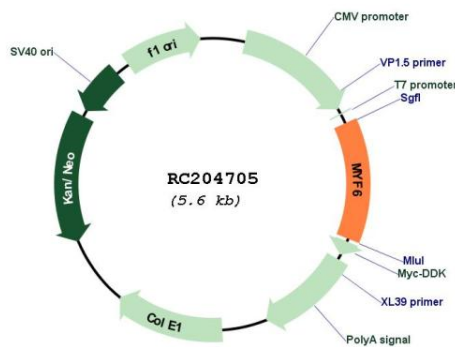
Cytogenetics: 12q21.31

Protein Families: Druggable Genome, Transcription Factors

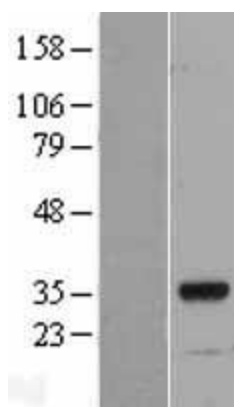
MW: 27 kDa

Gene Summary: The protein encoded by this gene is a probable basic helix-loop-helix (bHLH) DNA binding protein involved in muscle differentiation. The encoded protein likely acts as a heterodimer with another bHLH protein. Defects in this gene are a cause of autosomal dominant centronuclear myopathy (ADCNM). [provided by RefSeq, May 2010]

Product images:



Circular map for RC204705



Western blot validation of overexpression lysate (Cat# [LY400878]) using anti-DDK antibody (Cat# [TA50011-100]). Left: Cell lysates from untransfected HEK293T cells; Right: Cell lysates from HEK293T cells transfected with RC204705 using transfection reagent MegaTran 2.0 (Cat# [TT210002]).