

Product datasheet for **RC204704**

LOX 1 (OLR1) (NM_002543) Human Tagged ORF Clone

Product data:

Product Type: Expression Plasmids
Product Name: LOX 1 (OLR1) (NM_002543) Human Tagged ORF Clone
Tag: Myc-DDK
Symbol: LOX 1
Synonyms: CLEC8A; LOX1; LOXIN; SCARE1; SLOX1
Mammalian Cell Selection: Neomycin
Vector: pCMV6-Entry (PS100001)
E. coli Selection: Kanamycin (25 ug/mL)
ORF Nucleotide Sequence: >RC204704 ORF sequence
Red=Cloning site Blue=ORF Green=Tags(s)

TTTTGTAATACGACTCACTATAGGGCGGCCGGAATTCGTCGACTGGATCCGGTACCGAGGAGATCTGCC
GCC**CGGATCGCC**

ATGACTTTTGATGACCTAAAGATCCAGACTGTGAAGGACCAGCCTGATGAGAAGTCAAATGGAAAAAAG
CTAAAGGTCTTCAGTTCTTTACTCTCCATGGTGGTGCCTGGCTGCTGCGACTCTAGGGTCCTTTGCCT
GGGATTAGTAGTGACCATTATGGTGCTGGGCATGCAATTATCCCAGGTGTCTGACCTCTAACACAAGAG
CAAGCAAACCTAACTACCAGAAAAAGAACTGGAGGGACAGATCTCAGCCCGGCAACAAGCAGAAGAAG
CTTCACAGGAGTCAGAAAACGAACCTCAAGGAAATGATAGAAACCTTGCTCGGAAGCTGAATGAGAAATC
CAAAGAGCAAATGGAACCTCACCACCAGAATCTGAATCTCCAAGAAACACTGAAGAGAGTAGCAAATGT
TCAGCTCCTTGTCGCAAGACTGGATCTGGCATGGAGAAAACCTGTACCTATTTTCTCGGGCTCATTTA
ACTGGGAAAAGAGCCAAGAGAAGTGCTTGTCTTTGGATGCCAAGTTGCTGAAAATTAATAGCACAGCTGA
TCTGGACTTCAATCCAGCAAGCAATTTCTATTCCAGTTTTCCATTCTGGATGGGGCTGTCTCGGAGGAAC
CCCAGCTACCCATGGCTCTGGGAGGACGGTTCTCTTTGATGCCCACTTATTTAGAGTCCGAGGCGCTG
TCTCCAGACATACCCTTCAGGTACCTGTGCATATATAACAACGAGGAGCTGTTTATGCGGAAAACCTGCAT
TTAGCTGCCTTCAGTATATGTCAGAAGAAGGCAAACCTAAGAGCACAG

ACGCGTACGCGGCCGCTCGAGCAGAAACTCATCTCAGAAGAGGATCTGGCAGCAAATGATATCCTGGATT
ACAAGGATGACGACGATAAGGTTTAA



[View online »](#)

Protein Sequence: >RC204704 protein sequence
 Red=Cloning site Green=Tags(s)

MTFDDLKIQTVKDQPDEKSNKKAKGLQFLYSPWWCLAAATLGVLCGLVVTIMVLGMQLSQVSDLLTQE
 QANLTHQKKKLEGGISARQAAEEASQSENELKEMIETLARKLNEKSKEQMEHHQNLNLQETLKRIVANC
 SAPCPQDWIWHGENCYLFSGGSFNWEKSQEKCLSLDAKLLKINSTADLDFIQQAISYSSFPFWMGLSRRN
 PSYPWLWEDGSPMLPHLFRVRGAVSQTYPSTGTCAYIQRGAVYAENCILAAFSICQKKANLRAQ

TRTRPLEQKLISEEDLAANDILDYKDDDDKV

Chromatograms: https://cdn.origene.com/chromatograms/mk6172_g12.zip

Restriction Sites: SgfI-MluI

Cloning Scheme:

Cloning sites used for ORF Shuttling:



* The last codon before the Stop codon of the ORF

ACCN: NM_002543

ORF Size: 819 bp

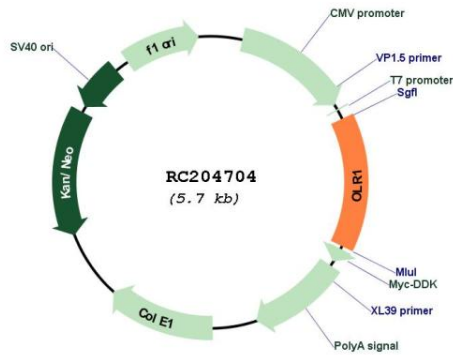
OTI Disclaimer: The molecular sequence of this clone aligns with the gene accession number as a point of reference only. However, individual transcript sequences of the same gene can differ through naturally occurring variations (e.g. polymorphisms), each with its own valid existence. This clone is substantially in agreement with the reference, but a complete review of all prevailing variants is recommended prior to use. [More info](#)

OTI Annotation: This clone was engineered to express the complete ORF with an expression tag. Expression varies depending on the nature of the gene.

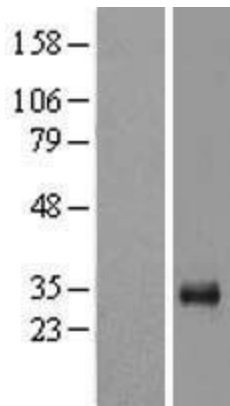
Components: The ORF clone is ion-exchange column purified and shipped in a 2D barcoded Matrix tube containing 10ug of transfection-ready, dried plasmid DNA (reconstitute with 100 ul of water).

| | |
|-------------------------------|---|
| Reconstitution Method: | <ol style="list-style-type: none">1. Centrifuge at 5,000xg for 5min.2. Carefully open the tube and add 100ul of sterile water to dissolve the DNA.3. Close the tube and incubate for 10 minutes at room temperature.4. Briefly vortex the tube and then do a quick spin (less than 5000xg) to concentrate the liquid at the bottom.5. Store the suspended plasmid at -20°C. The DNA is stable for at least one year from date of shipping when stored at -20°C. |
| Note: | Plasmids are not sterile. For experiments where strict sterility is required, filtration with 0.22um filter is required. |
| RefSeq: | NM_002543.4 |
| RefSeq Size: | 2533 bp |
| RefSeq ORF: | 822 bp |
| Locus ID: | 4973 |
| UniProt ID: | P78380 |
| Cytogenetics: | 12p13.2 |
| Domains: | CLECT |
| Protein Families: | Druggable Genome, Secreted Protein, Transmembrane |
| Protein Pathways: | PPAR signaling pathway |
| MW: | 31 kDa |
| Gene Summary: | This gene encodes a low density lipoprotein receptor that belongs to the C-type lectin superfamily. This gene is regulated through the cyclic AMP signaling pathway. The encoded protein binds, internalizes and degrades oxidized low-density lipoprotein. This protein may be involved in the regulation of Fas-induced apoptosis. This protein may play a role as a scavenger receptor. Mutations of this gene have been associated with atherosclerosis, risk of myocardial infarction, and may modify the risk of Alzheimer's disease. Alternate splicing results in multiple transcript variants.[provided by RefSeq, Feb 2010] |

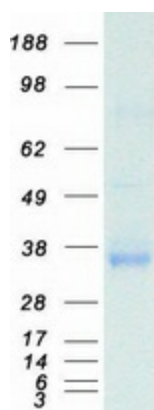
Product images:



Circular map for RC204704



Western blot validation of overexpression lysate (Cat# [LY400904]) using anti-DDK antibody (Cat# [TA50011-100]). Left: Cell lysates from untransfected HEK293T cells; Right: Cell lysates from HEK293T cells transfected with RC204704 using transfection reagent MegaTran 2.0 (Cat# [TT210002]).



Coomassie blue staining of purified OLR1 protein (Cat# [TP304704]). The protein was produced from HEK293T cells transfected with OLR1 cDNA clone (Cat# RC204704) using MegaTran 2.0 (Cat# [TT210002]).