

## Product datasheet for RC204695

### CASQ2 (NM\_001232) Human Tagged ORF Clone

#### Product data:

Product Type:	Expression Plasmids
Product Name:	CASQ2 (NM_001232) Human Tagged ORF Clone
Tag:	Myc-DDK
Symbol:	CASQ2
Synonyms:	PDIB2
Mammalian Cell Selection:	Neomycin
Vector:	pCMV6-Entry (PS100001)
E. coli Selection:	Kanamycin (25 ug/mL)
ORF Nucleotide Sequence:	>RC204695 ORF sequence Red=Cloning site Blue=ORF Green=Tags(s)

TTTTGTAATACGACTCACTATAGGGCGGCCGGAATTCGTCGACTGGATCCGGTACCGAGGAGATCTGCC  
GCC**CGATCGCC**

ATGAAGAGAACTCACTTGTTTATTGTGGGATTTATTTCTGTCCTCTTGACGGGCAGAAGAGGGGCTTA  
ATTTCCCCACATATGATGGGAAGGACCGAGTGGTAAGTCTTCCGAGAAGAACTCAAGCAGGTTTTAA  
GAAATATGACTTGCTTTGCCTCTACTACCATGAGCCGGTGTCTTCAGATAAGGTCACGCAAAAACAGTTC  
CAACTGAAAGAAATCGTGCTTGAGCTTGTGCCAGGTCCTTGAACATAAAGCTATAGGCTTTGTGATGG  
TGGATGCCAAGAAAGAAGCCAAGCTTGCCAAGAACTGGGTTTTGATGAAGAAGGAAGCCTGTATATTCT  
TAAGGGTGATCGACAATAGAGTTTGATGGCGAGTTGACAGTGTGCTTGGTGGAGTTCTCTGGAT  
CTAATTGAAGACCCAGTGGAGATCATCAGCAGCAAAGTGAAGTCCAAGCCTTCGAACGCATTGAAGACT  
ACATCAAACCTATTGGCTTTTTCAAGAGTGAGGACTCAGAATACTACAAGGCTTTTGAAGAAGCAGCTGA  
ACACTTCCAGCCTTACATCAAAATCTTTGCCACCTTTGACAAAGGGGTTGCAAAGAAATTATCTTTGAAG  
ATGAATGAGGTTGACTTCTATGAGCCATTTATGGATGAGCCATTGCCATCCCCAACAAACCTTACACAG  
AAGAGGAGCTGGTGGAGTTTGTGAAGGAACACCAAGACCCACTCTACGTCGCCTGCGCCAGAAGAAAT  
GTTTGAACATGGGAAGATGATTTGAATGGGATCCACATTTGTGGCCTTTGACAGAGAAGAGTGATCCAGAT  
GGCTACGAATTCCTGGAGATCCTGAAACAGGTTGCCCGGACAATACTGACAACCCGATCTGAGCATCC  
TGTGGATCGACCCGACGACTTTCCTCTGCTCGTTGCCTACTGGGAGAAGACTTTCAAGATTGACCTATT  
CAGGCCACAGATTGGGTGGTGAATGTCACAGATGCTGACAGTGTCTGGATGGAGATTCCAGATGATGAC  
GATCTTCCAAGTCTGAGGAGCTGGAGGACTGGATTGAGGATGTGCTTTCTGAAAGATAAACACTGAAG  
ATGATGATGAAGATGATGATGATGATAATTCTGATGAAGAGGATAATGATGACAGTGTGATGATGA  
TGATGAA

**ACGCGT**ACGCGGCCGCTCGAGCAGAAACTCATCTCAGAAGAGGATCTGGCAGCAAATGATATCCTGGATT  
ACAAGGATGACGACGATAAGGTTTAA



[View online »](#)



**Reconstitution Method:**

1. Centrifuge at 5,000xg for 5min.
2. Carefully open the tube and add 100ul of sterile water to dissolve the DNA.
3. Close the tube and incubate for 10 minutes at room temperature.
4. Briefly vortex the tube and then do a quick spin (less than 5000xg) to concentrate the liquid at the bottom.
5. Store the suspended plasmid at -20°C. The DNA is stable for at least one year from date of shipping when stored at -20°C.

**RefSeq:** [NM\\_001232.4](#)

**RefSeq Size:** 2716 bp

**RefSeq ORF:** 1200 bp

**Locus ID:** 845

**UniProt ID:** [O14958](#)

**Cytogenetics:** 1p13.1

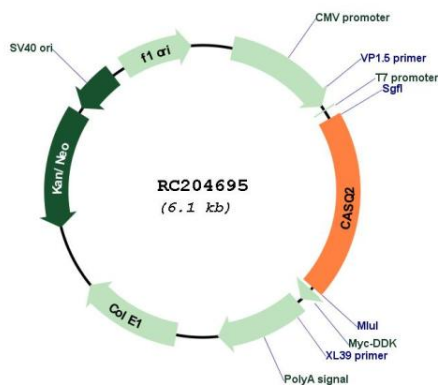
**Domains:** Calsequestrin

**Protein Families:** Druggable Genome

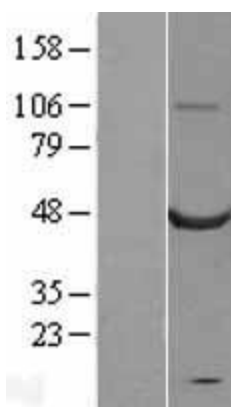
**MW:** 46.4 kDa

**Gene Summary:** The protein encoded by this gene specifies the cardiac muscle family member of the calsequestrin family. Calsequestrin is localized to the sarcoplasmic reticulum in cardiac and slow skeletal muscle cells. The protein is a calcium binding protein that stores calcium for muscle function. Mutations in this gene cause stress-induced polymorphic ventricular tachycardia, also referred to as catecholaminergic polymorphic ventricular tachycardia 2 (CPVT2), a disease characterized by bidirectional ventricular tachycardia that may lead to cardiac arrest. [provided by RefSeq, Jul 2008]

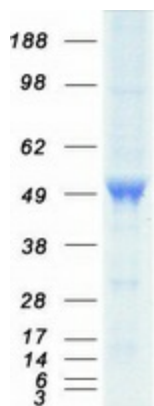
## Product images:



Circular map for RC204695



Western blot validation of overexpression lysate (Cat# [LY400493]) using anti-DDK antibody (Cat# [TA50011-100]). Left: Cell lysates from untransfected HEK293T cells; Right: Cell lysates from HEK293T cells transfected with RC204695 using transfection reagent MegaTran 2.0 (Cat# [TT210002]).



Coomassie blue staining of purified CASQ2 protein (Cat# [TP304695]). The protein was produced from HEK293T cells transfected with CASQ2 cDNA clone (Cat# RC204695) using MegaTran 2.0 (Cat# [TT210002]).