

Product datasheet for **RC204692**

Fibroblast activation protein, alpha (FAP) (NM_004460) Human Tagged ORF Clone

Product data:

Product Type:	Expression Plasmids
Product Name:	Fibroblast activation protein, alpha (FAP) (NM_004460) Human Tagged ORF Clone
Tag:	Myc-DDK
Symbol:	Fibroblast activation protein, alpha
Synonyms:	DPPIV; FAPA; FAPalpha; SIMP
Mammalian Cell Selection:	Neomycin
Vector:	pCMV6-Entry (PS100001)
E. coli Selection:	Kanamycin (25 ug/mL)



[View online »](#)

ORF Nucleotide
Sequence:

>RC204692 ORF sequence
Red=Cloning site Blue=ORF Green=Tags(s)

TTTTGTAATACGACTCACTATAGGGCGGCCGGGAATTCGTGACTGGATCCGGTACCGAGGAGATCTGCC
GCC**CGGATCGCC**

ATGAAGACTTGGGTA AAAATCGTATTTGGAGTTGCCACCTCTGCTGTGCTTGCCTTATTGGTGATGTGCA
TTGTCTTACGCCCTTCAAGAGTTCATAACTCTGAAGAAAATACAATGAGAGCACTCACACTGAAGGATAT
TTTAAATGGAACATTTTCTTATAAAAACATTTTTCCAAACTGGATTTCCAGGACAAGAATATCTTCATCAA
TCTGCAGATAACAATATAGTACTTTATAATATTGAAACAGGACAATCATATACCATTTTGGAGTAATAGAA
CCATGAAAAGTGTGAATGCTTCAAATTACGGCTTATCACCTGATCGGCAATTTGTATCTAGAAAAGTGA
TTATTCAAAGCTTTGGAGATACTTTACACAGCAACATATTACATCTATGACCTTAGCAATGGAGAATTT
GTAAGAGGAAATGAGCTTCTCGTCCAATTCAGTATTTATGCTGGTGCCTGTTGGGAGTAAATTAGCAT
ATGTCTATCAAAACAATATCTATTTGAAACAAAGACCAGGAGATCCACCTTTTCAAATAACATTTAATGG
AAGAGAAAATAAAAATATTTAATGGAATCCAGACTGGGTTTATGAAGAGGAAATGCTTGGCTACAAAATAT
GCTCTCTGGTGGTCTCCTAATGGAATAATTTGGCATATGCGGAATTTAATGATACGGATATACCAGTTA
TTGCCTATTCTATTATGGCGATGAACAATATCCTAGAACAATAAATATTCATACCCAAAGGCTGGAGC
TAAGAATCCCCTGTTCCGGATATTTATTATCGATACCACTTACCCTGCGTATGTAGTCCCAGGAAGTG
CCTGTTCCAGCAATGATAGCCTCAAGTGATTATTTTTCAGTTGGCTCACGTGGGTTACTGATGAACGAG
TATGTTTCAGTGGCTAAAAGAGTCCAGAATGTTTCGGTCTGTCTATATGTGACTTCAGGGAAGACTG
GCAGACATGGGATTGTCCAAAGACCCAGGAGCATATAGAAGAAAGCAGAACTGGATGGGCTGGTGGATTC
TTTGTTCACACCAGTTTTTCAGCTATGATGCCATTTTCGTAACAAAATATTTAGTGACAAGGATGGCT
ACAAACATATTCCTATATCAAGACACTGTGGAAAATGCTATTCAAATTAACAAGTGGCAAGTGGGAGGC
CATAAATATATTCAGAGTAACACAGGATTCAGTGTTTTATTCTAGCAATGAATTTGAAGAATACCCTGGA
AGAAGAAACATCTACAGAATTAGCATTGGAAGCTATCCTCCAAGCAAGAAGTGTGTTACTTGCCATCTAA
GGAAAGAAAGGTGCCAATATTACACAGCAAGTTTCAGCGACTACGCCAAGTACTATGCCTTGTCTGCTA
CGGCCAGGCATCCCATTTCCACCCTTATGATGGACGCACTGATCAAGAAATTAAGAACTTGAAGTAG
AACAAAGGAATTGGAAAATGCTTTGAAAATATCCAGCTGCCTAAAGAGGAAATTAAGAACTTGAAGTAG
ATGAAATTAATTTATGGTACAAGATGATTTCTCCTCAATTTGACAGATCAAAGAAGTATCCCTTGCT
AATTCAAGTGTATGGTGGTCCCTGCAGTCAGAGTGAAGGTCTGTATTTGCTGTTAATTGGATATCTTAT
CTTGCAAGTAAGGAAGGGATGGTCATTGCCTTGGTGGATGGTTCGAGGAACAGCTTTCCAAGGTGACAAAC
TCCTCTATGCAGTGTATCGAAAGCTGGGTGTTTATGAAGTTGAAGACCAGATTACAGCTGTGAGAAAAT
CATAGAAATGGGTTTCATTGATGAAAAAGAATAGCCATATGGGGCTGGTCTATGGAGGATACGTTTCA
TCACTGGCCCTTGCATCTGGAACCTGGTCTTTTCAAATGTGGTATAGCAGTGGCTCCAGTCTCCAGCTGGG
AATATTACGCGTCTGTCTACACAGAGAGATTATGGGTCTCCCAACAAAGGATGATAATCTTGAGCACTA
TAAGAATCAACTGTGATGGCAAGAGCAGAATATTTGAGAAATGTAGACTATCTTCTCATCCACGGAAACA
GCAGATGATAATGTGCACTTTCAAACCTCAGCACAGATTGCTAAAGCTCTGGTTAATGCACAAGTGGATT
TCCAGGCAATGTGGTACTCTGACCAGAACACGGCTTATCCGGCTGTCCACGAACCACTTATACACCCA
CATGACCACTTCTAAAGCAGTGTTCCTTTGTCAGAC

AG**CGGACCG**ACGCGTACGCGGCCGCTCGAGCAGAACTCATCTCAGAAGAGGATCTGGCAGCAAATGATATCC
TGGATTACAAGGATGACGACGATAAGGTTTAA

Protein Sequence: >RC204692 protein sequence
Red=Cloning site Green=Tags(s)

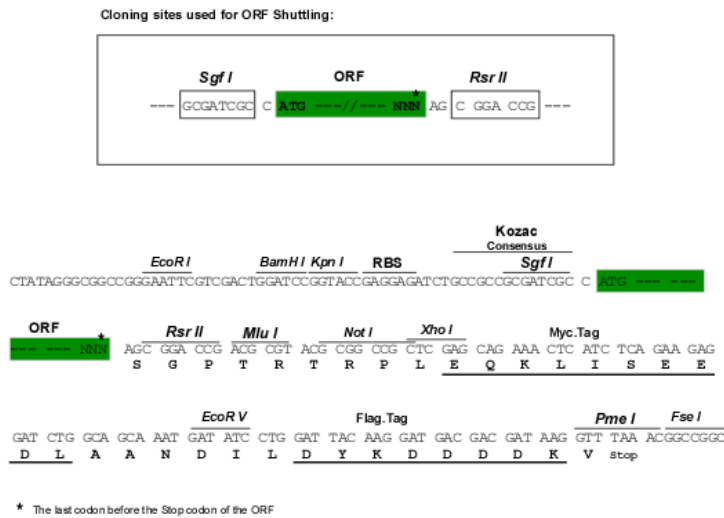
MKTWVKIVFGVATSAVLALLVMCIVLRPSRVHNSEENTMRALTLKDILNGTFSYKTFPPNWSGQEYLHQ
 SADNNIVLYNIETGQSYTILSNRTMKS VNASNYGLSPDRQFVYLEDYSKLRYSYATYYIYDLNNGEF
 VRGNELPRPIQYLCWSPVGSKLAYVYQNNIYLKQRPGDPPFQITFNGRENKIFNGIPDWVYEEMLATKY
 ALWWSPNGKFLAYAEFNDDIPVIAYSYQDEQYPRPTINIPYPKAGAKNPVVRIFIIDTTYPAYVGPQEV
 PVPAMIASSDYF SWL TWVTDERVCLQWLKRVQNVSVLSICDFREDWQTWDCPKTQEHIEESRTGWAGGF
 FVSTPVFSYDAISYYKIFSDKDGKHYKHIHYKDTVENAIQITSGKWEAINIFRVTQDSL FYSNEFEEYPG
 RRNIYRISIGSYPPSKKCVTCHLRKERCQYTTASFSDYAKYYALVCYGPPISTLHDGRDQEI KILEE
 NKELENALKNIQLPKEEIKKLEVEITLWYKMILPPQFDRSKKYPLL IQVYGGPCSQSVRSVFAVNWISY
 LASKEGMVIALVDGRGTAFGDKLLYAVYRKLGVYEVEDQITAVRKF IEMGF IDEKRIAIWGSYGGYVS
 SLALASGTGLFKCGI AVAPVSSWEYYSVYTERFMGLPTKDDNLEHYKNSTVMARAEYFRNV DYL LIHGT
 ADDNVHFQNSAQIAKALVNAQVDFQAMWYSDQNHGLSGLSTNHL YTHMTHFLKQCFSLSD

SGPTRTRPLEQKLISEEDLAANDILDYKDDDDKV

Chromatograms: https://cdn.origene.com/chromatograms/mk6184_e08.zip

Restriction Sites: SgfI-RsrII

Cloning Scheme:



ACCN: NM_004460

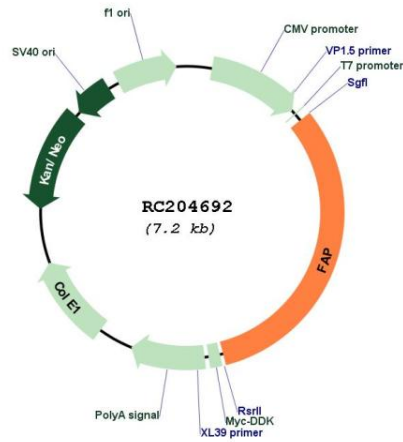
ORF Size: 2280 bp

OTI Disclaimer: The molecular sequence of this clone aligns with the gene accession number as a point of reference only. However, individual transcript sequences of the same gene can differ through naturally occurring variations (e.g. polymorphisms), each with its own valid existence. This clone is substantially in agreement with the reference, but a complete review of all prevailing variants is recommended prior to use. [More info](#)

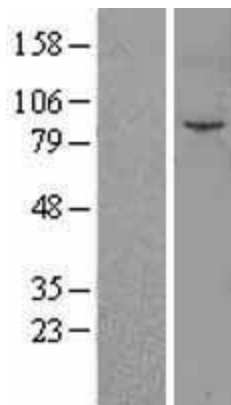
OTI Annotation: This clone was engineered to express the complete ORF with an expression tag. Expression varies depending on the nature of the gene.

Components:	The ORF clone is ion-exchange column purified and shipped in a 2D barcoded Matrix tube containing 10ug of transfection-ready, dried plasmid DNA (reconstitute with 100 ul of water).
Reconstitution Method:	<ol style="list-style-type: none">1. Centrifuge at 5,000xg for 5min.2. Carefully open the tube and add 100ul of sterile water to dissolve the DNA.3. Close the tube and incubate for 10 minutes at room temperature.4. Briefly vortex the tube and then do a quick spin (less than 5000xg) to concentrate the liquid at the bottom.5. Store the suspended plasmid at -20°C. The DNA is stable for at least one year from date of shipping when stored at -20°C.
RefSeq:	NM_004460.5
RefSeq Size:	2815 bp
RefSeq ORF:	2283 bp
Locus ID:	2191
UniProt ID:	Q12884
Cytogenetics:	2q24.2
Domains:	Peptidase_S9, DPPIV_N_term
Protein Families:	Druggable Genome, Protease, Transmembrane
MW:	87.7 kDa
Gene Summary:	The protein encoded by this gene is a homodimeric integral membrane gelatinase belonging to the serine protease family. It is selectively expressed in reactive stromal fibroblasts of epithelial cancers, granulation tissue of healing wounds, and malignant cells of bone and soft tissue sarcomas. This protein is thought to be involved in the control of fibroblast growth or epithelial-mesenchymal interactions during development, tissue repair, and epithelial carcinogenesis. Alternatively spliced transcript variants encoding different isoforms have been found for this gene. [provided by RefSeq, Apr 2014]

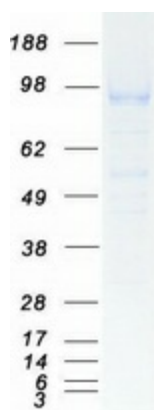
Product images:



Circular map for RC204692



Western blot validation of overexpression lysate (Cat# [LY401418]) using anti-DDK antibody (Cat# [TA50011-100]). Left: Cell lysates from untransfected HEK293T cells; Right: Cell lysates from HEK293T cells transfected with RC204692 using transfection reagent MegaTran 2.0 (Cat# [TT210002]).



Coomassie blue staining of purified FAP protein (Cat# [TP304692]). The protein was produced from HEK293T cells transfected with FAP cDNA clone (Cat# RC204692) using MegaTran 2.0 (Cat# [TT210002]).