

Product datasheet for **RC204691**

Macrophage Inflammatory Protein 3 alpha (CCL20) (NM_004591) Human Tagged ORF Clone

Product data:

Product Type:	Expression Plasmids
Product Name:	Macrophage Inflammatory Protein 3 alpha (CCL20) (NM_004591) Human Tagged ORF Clone
Tag:	Myc-DDK
Symbol:	Macrophage Inflammatory Protein 3 alpha
Synonyms:	CKb4; Exodus; LARC; MIP-3-alpha; MIP-3a; MIP3A; SCYA20; ST38
Mammalian Cell Selection:	Neomycin
Vector:	pCMV6-Entry (PS100001)
E. coli Selection:	Kanamycin (25 ug/mL)
ORF Nucleotide Sequence:	>RC204691 ORF sequence Red=Cloning site Blue=ORF Green=Tags(s)

TTTTGTAATACGACTCACTATAGGGCGGCCGGAATTCGTCGACTGGATCCGGTACCGAGGAGATCTGCC
GCC**CGATCGCC**

ATGTGCTGTACCAAGAGTTTGCTCCTGGCTGCTTTGATGTCAGTGCTGCTACTCCACCTCTGCGCGAAT
CAGAAGCAAGCACTTTGACTGCTGTCTTGATACACAGACCGTATTCTTCATCTAAATTTATTGTGGG
CTTCACACGGCAGCTGGCCAATGAAGGCTGTGACATCAATGCTATCATCTTTCACACAAAGAAAAAGTTG
TCTGTGTGCGCAAATCCAAAACAGACTGGGTGAAATATATTGTGCGTCTCCTCAGTAAAAAAGTCAAGA
ACATG

ACGCGTACGCGGCCGCTCGAGCAGAAACTCATCTCAGAAGAGGATCTGGCAGCAAATGATATCCTGGATT
ACAAGGATGACGACGATAAGGTTTAA

Protein Sequence:	>RC204691 protein sequence Red=Cloning site Green=Tags(s)
-------------------	--

MCCTKSLLLAALMSVLLHLGGESEASNFDCCLGYTDRILHPKFIVGFTRQLANEGCDINAIIFHTKKKL
SVCANPKQTWVKYIVRLLSCKVKNM

TRTRPLEQKLISEEDLAANDILDYKDDDDKV

Chromatograms: https://cdn.origene.com/chromatograms/mk6068_c01.zip

Restriction Sites: SgfI-MluI



[View online »](#)

Cloning Scheme:



ACCN: NM_004591

ORF Size: 285 bp

OTI Disclaimer: The molecular sequence of this clone aligns with the gene accession number as a point of reference only. However, individual transcript sequences of the same gene can differ through naturally occurring variations (e.g. polymorphisms), each with its own valid existence. This clone is substantially in agreement with the reference, but a complete review of all prevailing variants is recommended prior to use. [More info](#)

OTI Annotation: This clone was engineered to express the complete ORF with an expression tag. Expression varies depending on the nature of the gene.

Components: The ORF clone is ion-exchange column purified and shipped in a 2D barcoded Matrix tube containing 10ug of transfection-ready, dried plasmid DNA (reconstitute with 100 ul of water).

- Reconstitution Method:**
1. Centrifuge at 5,000xg for 5min.
 2. Carefully open the tube and add 100ul of sterile water to dissolve the DNA.
 3. Close the tube and incubate for 10 minutes at room temperature.
 4. Briefly vortex the tube and then do a quick spin (less than 5000xg) to concentrate the liquid at the bottom.
 5. Store the suspended plasmid at -20°C. The DNA is stable for at least one year from date of shipping when stored at -20°C.

RefSeq: [NM_004591.3](#)

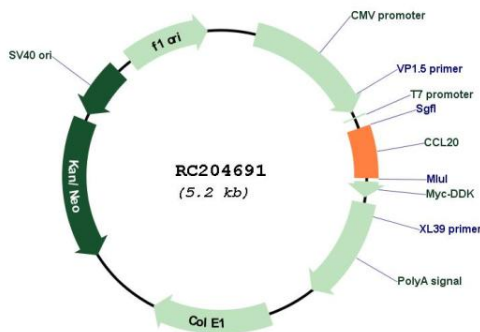
RefSeq Size: 851 bp

RefSeq ORF: 291 bp

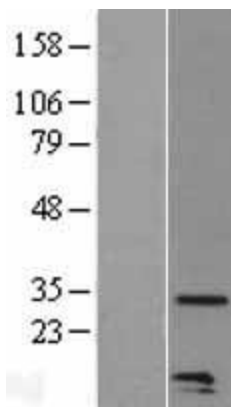
Locus ID: 6364

UniProt ID: [P78556](#)
Cytogenetics: 2q36.3
Protein Families: Druggable Genome, Secreted Protein
Protein Pathways: Chemokine signaling pathway, Cytokine-cytokine receptor interaction
MW: 10.7 kDa
Gene Summary: This antimicrobial gene belongs to the subfamily of small cytokine CC genes. Cytokines are a family of secreted proteins involved in immunoregulatory and inflammatory processes. The CC cytokines are proteins characterized by two adjacent cysteines. The protein encoded by this gene displays chemotactic activity for lymphocytes and can repress proliferation of myeloid progenitors. Two transcript variants encoding different isoforms have been found for this gene. [provided by RefSeq, Sep 2014]

Product images:



Circular map for RC204691



Western blot validation of overexpression lysate (Cat# [LY401468]) using anti-DDK antibody (Cat# [TA50011-100]). Left: Cell lysates from untransfected HEK293T cells; Right: Cell lysates from HEK293T cells transfected with RC204691 using transfection reagent MegaTran 2.0 (Cat# [TT210002]).