

Product datasheet for **RC204687**

LHFPL6 (NM_005780) Human Tagged ORF Clone

Product data:

Product Type:	Expression Plasmids
Product Name:	LHFPL6 (NM_005780) Human Tagged ORF Clone
Tag:	Myc-DDK
Symbol:	LHFPL6
Synonyms:	LHFP
Mammalian Cell Selection:	Neomycin
Vector:	pCMV6-Entry (PS100001)
E. coli Selection:	Kanamycin (25 ug/mL)
ORF Nucleotide Sequence:	>RC204687 ORF sequence Red=Cloning site Blue=ORF Green=Tags(s)

TTTGTAAATACGACTCACTATAGGGCGGCCGGAATTCGTCGACTGGATCCGGTACCGAGGAGATCTGCC
 GCC**CGATCGCC**

ATGGCATCCAGCCTGACTTGTACTGGAGTAATCTGGGCTTTGCTGTCTTTCTTTGTGCTGCCACCTCT
 CGGTGGGTTCTTTATGCCTTACTGGCTCTGGGATCACAGCTGGGAAGCCTGTGCTCTTCGTACCTT
 CCGGAGGTGCTCATATCCTGTGCATGATGAGAGTCGGCAGATGATGGTGATGGTGGAGGAATGTGGCGC
 TATGCCTCCTCCAGGGCATCCCAGCGCAGAATGGAGGATCTGCACCATAGTGACCGCCTGGGTTGTG
 GCCTCCTCCTCCTGGTGGCGCTCACTGCCCTCATGGGTTGCTGTGTTCCGACCTCATCTCCAGGACAGT
 GGAAGAGTGGCTGGAGGAATTCAGTTTCTTGGGGGCTTGTGATTGGTGCTGGCTGTGCCCTCTACCCC
 TTGGGCTGGGACAGTGAGGAAGTCCGGCAGACTTGTGGCTACACTTCTGGCCAGTTTGACCTGGGGAAGT
 GTGAAATCGGCTGGGCTACTACTGCACGGGAGCAGGTGCCACTGCCCATGCTGCTGTGCACGTGGCT
 GGCTTGCTTTTCGGGCAAGAAACAGAAGCACTACCCATAC

ACGCGTACGCGGCCGCTCGAGCAGAACTCATCTCAGAAGAGGATCTGGCAGCAAATGATATCCTGGATT
 ACAAGGATGACGACGATAAGGTTTAA

Protein Sequence:	>RC204687 protein sequence Red=Cloning site Green=Tags(s)
-------------------	--

MASSLTCTGVIWALLSFLCAATSCVGFMPYWLWGSQLGKPVSFGTFRCSYPVHDESRQMMVMVEECGR
 YASFQGPSAEWRICTIVTGLGCLLLLVALTALMGCCVSDLSRTVGRVAGGIQFLGGLLIGAGCALYP
 LGWDSEEVQRQTCGYTSGQFDLGKCEIGWAYCYTGAGATAAMLLCTWLACFSGKKQKHYPY

TRTRPLEQKLISEEDLAANDILDYKDDDDKV


[View online »](#)

Chromatograms: https://cdn.origene.com/chromatograms/mk6438_f11.zip

Restriction Sites: SgfI-MluI

Cloning Scheme:



ACCN: NM_005780

ORF Size: 600 bp

OTI Disclaimer: Due to the inherent nature of this plasmid, standard methods to replicate additional amounts of DNA in E. coli are highly likely to result in mutations and/or rearrangements. Therefore, OriGene does not guarantee the capability to replicate this plasmid DNA. Additional amounts of DNA can be purchased from OriGene with batch-specific, full-sequence verification at a reduced cost. Please contact our customer care team at custsupport@origene.com or by calling 301.340.3188 option 3 for pricing and delivery.

The molecular sequence of this clone aligns with the gene accession number as a point of reference only. However, individual transcript sequences of the same gene can differ through naturally occurring variations (e.g. polymorphisms), each with its own valid existence. This clone is substantially in agreement with the reference, but a complete review of all prevailing variants is recommended prior to use. [More info](#)

OTI Annotation: This clone was engineered to express the complete ORF with an expression tag. Expression varies depending on the nature of the gene.

Components: The ORF clone is ion-exchange column purified and shipped in a 2D barcoded Matrix tube containing 10ug of transfection-ready, dried plasmid DNA (reconstitute with 100 ul of water).

Reconstitution Method:

1. Centrifuge at 5,000xg for 5min.
2. Carefully open the tube and add 100ul of sterile water to dissolve the DNA.
3. Close the tube and incubate for 10 minutes at room temperature.
4. Briefly vortex the tube and then do a quick spin (less than 5000xg) to concentrate the liquid at the bottom.
5. Store the suspended plasmid at -20°C. The DNA is stable for at least one year from date of shipping when stored at -20°C.

Note: Plasmids are not sterile. For experiments where strict sterility is required, filtration with 0.22um filter is required.

RefSeq: [NM_005780.3](#)

RefSeq Size: 2180 bp

RefSeq ORF: 603 bp

Locus ID: 10186

UniProt ID: [Q9Y693](#)

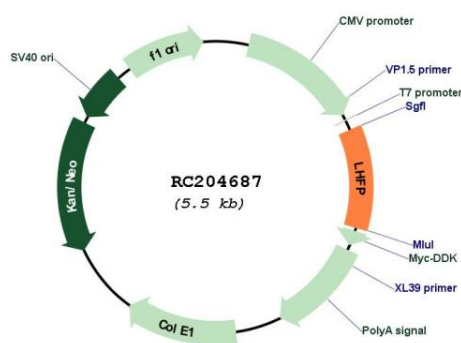
Cytogenetics: 13q13.3-q14.11

Protein Families: Transmembrane

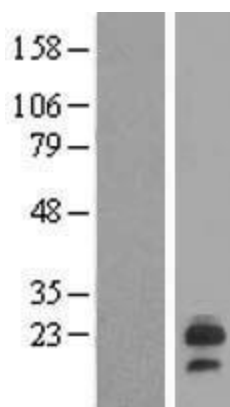
MW: 21.6 kDa

Gene Summary: This gene is a member of the lipoma HMGIC fusion partner (LHFP) gene family, which is a subset of the superfamily of tetraspan transmembrane protein encoding genes. This gene is fused to a high-mobility group gene in a translocation-associated lipoma. Mutations in another LHFP-like gene result in deafness in humans and mice. Alternatively spliced transcript variants have been found; however, their full-length nature is not known. [provided by RefSeq, Jul 2008]

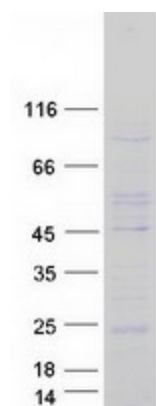
Product images:



Circular map for RC204687



Western blot validation of overexpression lysate (Cat# [LY417068]) using anti-DDK antibody (Cat# [TA50011-100]). Left: Cell lysates from untransfected HEK293T cells; Right: Cell lysates from HEK293T cells transfected with RC204687 using transfection reagent MegaTran 2.0 (Cat# [TT210002]).



Coomassie blue staining of purified LHFPL6 protein (Cat# [TP304687]). The protein was produced from HEK293T cells transfected with LHFPL6 cDNA clone (Cat# RC204687) using MegaTran 2.0 (Cat# [TT210002]).