

Product datasheet for **RC204684**

PGCP (CPQ) (NM_016134) Human Tagged ORF Clone

Product data:

Product Type:	Expression Plasmids
Product Name:	PGCP (CPQ) (NM_016134) Human Tagged ORF Clone
Tag:	Myc-DDK
Symbol:	PGCP
Synonyms:	LDP; PGCP
Mammalian Cell Selection:	Neomycin
Vector:	pCMV6-Entry (PS100001)
E. coli Selection:	Kanamycin (25 ug/mL)



[View online »](#)

ORF Nucleotide Sequence:

>RC204684 ORF sequence
 Red=Cloning site Blue=ORF Green=Tags(s)

TTTTGTAATACGACTCACTATAGGGCGGCCGGAATTCGTCGACTGGATCCGGTACCGAGGAGATCTGCC
 GCC**CGCATCGCC**

ATGAAATTCCTTATCTTCGCATTTTTTCGGTGGTGTTCACCTTTTATCCCTGTGCTCTGGAAAGCTATAT
 GCAAGAATGGCATCTCTAAGAGGACTTTTGAAGAAATAAAGAAGAAATAGCCAGCTGTGGAGATGTTGC
 TAAAGCAATCATCAACCTAGCTGTTTATGGTAAAGCCAGAACAGATCCTATGAGCGATTGGCACTTCTG
 GTTGATACTGTTGGACCCAGACTGAGTGGCTCCAAGAACCTAGAAAAAGCCATCCAAATTATGTACCAAA
 ACCTGCAGCAAGATGGGCTGGAGAAAGTTCACCTGGAGCCAGTGAGAATACCCCACTGGGAGAGGGGAGA
 AGAATCAGCTGTGATGCTGGAGCCAAGAATTATAAGATAGCCATCCTGGGTCTTGGCAGCAGCATTGGG
 ACTCCTCCAGAAGGCATTACAGCAGAAGTCTGGTGGTACCTCTTTCGATGAACTGCAGAGAAGGGCCT
 CAGAAGCAAGAGGAAGATTGTTGTTTATAACCAACCTTACATCAACTACTCAAGGACGGTGAATACCG
 AACGCAGGGGGCGGTGGAAGCTGCCAAGTTGGGGCTTTGGCATCTCTCATTTCGATCCGTGGCCTCCTTC
 TCCATCTACAGTCTCACACAGGTATTCAGGAATACCAGGATGGCGTGCCCAAGATTCCAACAGCCTGTA
 TTACGGTGAAGATGCAGAAATGATGTCAAGAATGGCTTCTCATGGGATCAAAATTTGCATTTCAGCTAAA
 GATGGGGCAAAGACCTACCCAGATACTGATTCCTTCAACACTGTAGCAGAGATCACTGGGAGCAAAATAT
 CCAGAACAGGTTGACTGGTCACTGGACATCTGGACAGCTGGGATGTTGGCAGGGTGCCATGGATGATG
 GCGGTGGAGCCTTTATATCATGGGAAGCACTCTCACTTATTAAGATCTTGGGCTGCGTCCAAGAGGAC
 TCTGCGGTGGTCTCTGGACTGCAGAAGAACAAGGTGGAGTTGGTGCCTTCCAGTATTATCAGTTACAC
 AAGGTAATATTTCCAACACTACAGTCTGGTATGGAGTCTGACGCAGGAACCTTCTTACCCACTGGGCTGC
 AATTCACCTGGCAGTGAAAAGCCAGGGCCATCATGGAGGAGTTATGAGCCTGCTGCAGCCCTCAATAT
 CACTCAGTCTGAGCCATGGAGAAGGACAGACATCAACTTTTGGATCCAAGCTGGAGTGCCTGGAGCC
 AGTCTACTTGATGACTTATAACAAGTATTTCTTCTTCCATCACTCCACGGAGACACCATGACTGTATGG
 ATCCAAAGCAGATGAATGTTGCTGCTGCTGTTGGGCTGTTGTTTCTTATGTTGTTGCAGACATGGAAGA
 AATGCTGCCTAGGTCC

ACGCGTACGCGGCCGCTCGAGCAGAAACTCATCTCAGAAGAGGATCTGGCAGCAAATGATATCCTGGATT
 ACAAGGATGACGACGATAAGGTTTAA

Protein Sequence:

>RC204684 protein sequence
 Red=Cloning site Green=Tags(s)

MKFLIFAFFGGVHLLSLCSGKAICKNGISKRTFEEIKEEIASCGDVAKAIINLAVYGKAQNRSYERLALL
 VDTVGPRLSGSKNLEKAIQIMYQNLQDGLKLVHLEPVRIPHWERGEESAVMLEPRIHKIAILGLGSSIG
 TPPEGITAEVLVVTDFDELQRRASEARGKIVVYNQPYINYSRVQYRTQGAVEAAKVGALASLIRSVASF
 SIYSPHTGIQEYQDGVPKIPTACITVEDAEMMSRMASHGIKIVIQKMGAKTYPDTSFNTVAEITGSKY
 PEQVVLVSGHLDSWDVGGAMDDGGGAFISWEALSLIKDLGLRPKRTLRLVLWTAEQGGVGAFFYYQLH
 KVNISNYSLVMSDAGTFLPTGLQFTGSEKARAIMEEVMSLLQPLNITQVLSHGEGTDINFWIQAGVPGA
 SLLDDLKYYFFHHSHGDTMTVMDPKQMNVAADVAVVSVVADMEMLPRS

TRTRPLEQKLISEEDLAANDILDYKDDDDKV

Chromatograms:

https://cdn.origene.com/chromatograms/mk6177_g06.zip

Restriction Sites:

Sgfl-Mlul

Cloning Scheme:

ACCN: NM_016134

ORF Size: 1416 bp

OTI Disclaimer: The molecular sequence of this clone aligns with the gene accession number as a point of reference only. However, individual transcript sequences of the same gene can differ through naturally occurring variations (e.g. polymorphisms), each with its own valid existence. This clone is substantially in agreement with the reference, but a complete review of all prevailing variants is recommended prior to use. [More info](#)
OTI Annotation: This clone was engineered to express the complete ORF with an expression tag. Expression varies depending on the nature of the gene.

Components: The ORF clone is ion-exchange column purified and shipped in a 2D barcoded Matrix tube containing 10ug of transfection-ready, dried plasmid DNA (reconstitute with 100 ul of water).

Reconstitution Method:

1. Centrifuge at 5,000xg for 5min.
2. Carefully open the tube and add 100ul of sterile water to dissolve the DNA.
3. Close the tube and incubate for 10 minutes at room temperature.
4. Briefly vortex the tube and then do a quick spin (less than 5000xg) to concentrate the liquid at the bottom.
5. Store the suspended plasmid at -20°C. The DNA is stable for at least one year from date of shipping when stored at -20°C.

RefSeq: [NM_016134.2](#), [NP_057218.1](#)
RefSeq Size: 1949 bp

RefSeq ORF: 1419 bp

Locus ID: 10404

UniProt ID: [Q9Y646](#)
Cytogenetics: 8q22.1

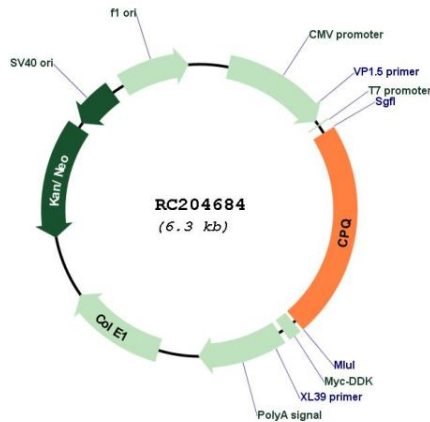
Domains: Peptidase_M28

Protein Families: Protease

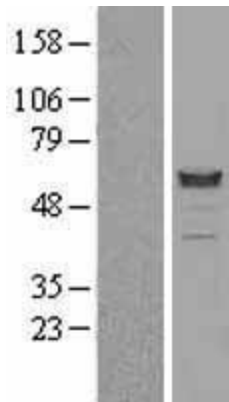
MW: 51.9 kDa

Gene Summary: This gene encodes a metallopeptidase that belongs to the peptidase M28 family. The encoded protein may catalyze the cleavage of dipeptides with unsubstituted terminals into amino acids. [provided by RefSeq, Jul 2013]

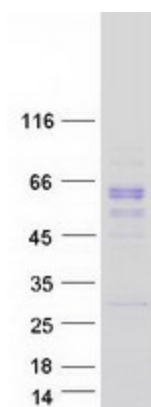
Product images:



Circular map for RC204684



Western blot validation of overexpression lysate (Cat# [LY402505]) using anti-DDK antibody (Cat# [TA50011-100]). Left: Cell lysates from untransfected HEK293T cells; Right: Cell lysates from HEK293T cells transfected with RC204684 using transfection reagent MegaTran 2.0 (Cat# [TT210002]).



Coomassie blue staining of purified CPQ protein (Cat# [TP304684]). The protein was produced from HEK293T cells transfected with CPQ cDNA clone (Cat# RC204684) using MegaTran 2.0 (Cat# [TT210002]).