

Product datasheet for **RC204683**

Fibulin 5 (FBLN5) (NM_006329) Human Tagged ORF Clone

Product data:

Product Type:	Expression Plasmids
Product Name:	Fibulin 5 (FBLN5) (NM_006329) Human Tagged ORF Clone
Tag:	Myc-DDK
Symbol:	Fibulin 5
Synonyms:	ADCL2; ARCL1A; ARMD3; DANCE; EVEC; FIBL-5; HNARMD; UP50
Mammalian Cell Selection:	Neomycin
Vector:	pCMV6-Entry (PS100001)
E. coli Selection:	Kanamycin (25 ug/mL)



[View online »](#)

ORF Nucleotide Sequence:

>RC204683 ORF sequence
 Red=Cloning site Blue=ORF Green=Tags(s)

TTTTGTAATACGACTCACTATAGGGCGGCCGGAATTCGTCGACTGGATCCGGTACCGAGGAGATCTGCC
 GCC**CGGATCGCC**

ATGCCAGGAATAAAAAGGATACTACTGTTACCATTCTGGCTCTCTGTCTTCCAAGCCCTGGGAATGCAC
 AGGCACAGTGCACGAATGGCTTTGACCTGGATCGCCAGTCAGGACAGTGTAGATATTGATGAATGCCG
 AACCATCCCCGAGGCTGCCGAGGAGACATGATGTGTGTTAACCAAAATGGCGGGTATTTATGCATTCCC
 CGGACAAACCCTGTGTATCGAGGGCCCTACTCGAACCCCTACTCGACCCCTACTCAGGTCGGTACCCAG
 CAGCTGCCCCACCACTCTCAGCTCCAACTATCCACGATCTCCAGGCCTTTATATGCCGCTTTGGATA
 CCAGATGGATGAAAGCAACCAATGTGTGGATGTGGACGAGTGTGCAACAGATTCCACCAGTGAACCCC
 ACCCAGATCTGCATCAATACTGAAGGCGGGTACACCTGCTCCTGCACCGACGGATATTGGCTTCTGGAAG
 GCCAGTGTAGACATTGATGAATGTGCTATGGTTACTGCCAGCAGCTCTGTGCGAATGTTCTCTGGATC
 CTATTCTGTACATGCAACCCTGGTTTTACCCTCAATGAGGATGGAAGGCTTGCCAAGATGTGAACGAG
 TGTGCCACCGAGAACCCCTGCGTGCAAACCTGCGTCAACACCTACGGCTCTTTATCTGCCGCTGTGACC
 CAGGATATGAACTTGAGGAAGATGGCGTTCATTGCAGTGATATGGACGAGTGCAGCTTCTCTGAGTTCCT
 CTGCCAACATGAGTGTGTGAACAGCCCGGCACATACTTCTGCTCCTGCCCTCCAGGCTACATCCTGCTG
 GATGACAACCGAAGCTGCCAAGACATCAACGAATGTGAGCACAGGAACACACGTGCAACCTGCAGCAGA
 CGTGCTACAATTTACAAGGGGGCTTCAAATGCATCGACCCATCCGCTGTGAGGAGCCTTATCTGAGGAT
 CAGTGATAACCGCTGTATGTGCTCTGCTGAGAACCCTGGCTGCAGAGACCAGCCCTTTACCATCTGTAC
 CGGGACATGGACGTGGTGTGAGGACGCTCCGTTCCCGCTGACATCTTCAAATGCAAGCCACGACCCGCT
 ACCCTGGGGCTATTACATTTTCCAGATCAAATCTGGAATGAGGGCAGAGAATTTACATGCGGCAAAC
 GGGCCCCATCAGTGCCACCCCTGGTGTGACACGCCCCATCAAAGGGCCCCGGGAATCCAGCTGGACTTG
 GAAATGATCACTGTCAACACTGTCACTTCAAGGACGCTCCGTGATCCGACTGCGGATATATGTGT
 CGCAGTACCCATTC

ACGCGTACGCGGCCGCTCGAGCAGAACTCATCTCAGAAGAGGATCTGGCAGCAAATGATATCCTGGATT
 ACAAGGATGACGACGATAAGGTTTAA

Protein Sequence:

>RC204683 protein sequence
 Red=Cloning site Green=Tags(s)

MPGIKRILTVTILALCLPSPGNAQAQCTNGFDLDRQSGQCLDIDECRTIPEACRGMCMVNQNGGYLCIP
 RTNPVYRGPYSNPYSTPYSGPYPAAPPLSAPNYPTISRPLICRFGYQMDENQCVDVDECATDSHCNP
 TQICINTEGGYTCSDTDGYWLLLEGQCLDIDECRYGYCQQLCANVPGYSYCTCNPGLNEDGRSQDVNE
 CATENPCVQTCVNTYGSFICRCDPGYELEEDGVHCSDMDECSFSEFLCQHECVNQPGTYFCSCPPGYILL
 DDNRSCQDINECEHRNHTCNLQQTQCYNLQGGFKCIDPIRCEEPYLRI SDNRCMCPAENPGCRDQPFITLY
 RDMDVVSGRSVPADIFQMQATTRYPGAYYIFQIKSGNEGREFYMRQTGPISATLVMTRPIKGPREIQLDL
 EMITVNTVINFRGSSVIRLRIYVSQYPF

TRTRPLEQKLISEEDLAANDILDYKDDDDKV

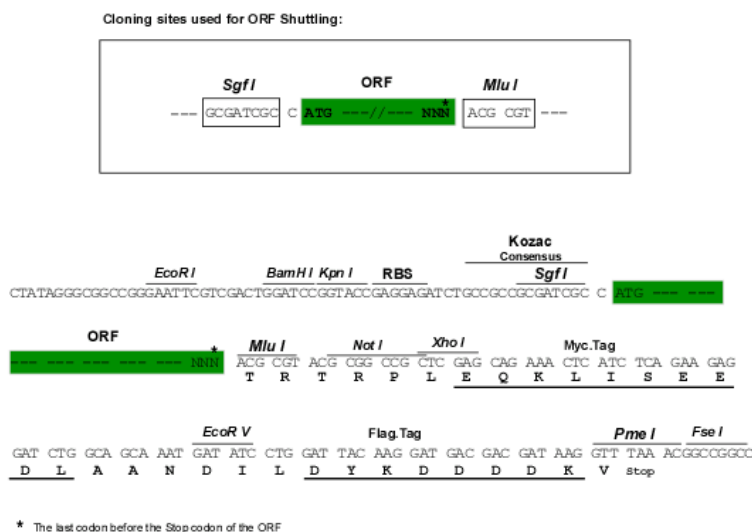
Chromatograms:

https://cdn.origene.com/chromatograms/mk6178_h05.zip

Restriction Sites:

Sgfl-Mlul

Cloning Scheme:



ACCN: NM_006329

ORF Size: 1344 bp

OTI Disclaimer: The molecular sequence of this clone aligns with the gene accession number as a point of reference only. However, individual transcript sequences of the same gene can differ through naturally occurring variations (e.g. polymorphisms), each with its own valid existence. This clone is substantially in agreement with the reference, but a complete review of all prevailing variants is recommended prior to use. [More info](#)

OTI Annotation: This clone was engineered to express the complete ORF with an expression tag. Expression varies depending on the nature of the gene.

Components: The ORF clone is ion-exchange column purified and shipped in a 2D barcoded Matrix tube containing 10ug of transfection-ready, dried plasmid DNA (reconstitute with 100 ul of water).

Reconstitution Method:

1. Centrifuge at 5,000xg for 5min.
2. Carefully open the tube and add 100ul of sterile water to dissolve the DNA.
3. Close the tube and incubate for 10 minutes at room temperature.
4. Briefly vortex the tube and then do a quick spin (less than 5000xg) to concentrate the liquid at the bottom.
5. Store the suspended plasmid at -20°C. The DNA is stable for at least one year from date of shipping when stored at -20°C.

RefSeq: [NM_006329.2](#), [NP_006320.2](#)

RefSeq Size: 2637 bp

RefSeq ORF: 1347 bp

Locus ID: 10516

UniProt ID: [Q9UBX5](#)

Cytogenetics: 14q32.12

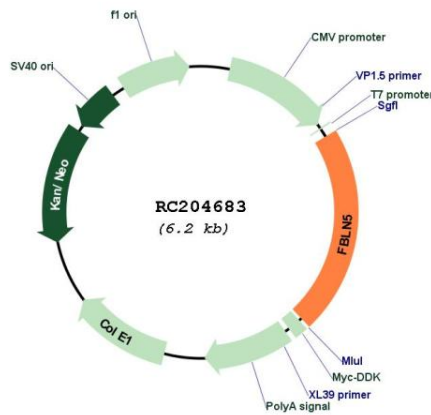
Domains: EGF_CA, EGF, EGF

Protein Families: Secreted Protein

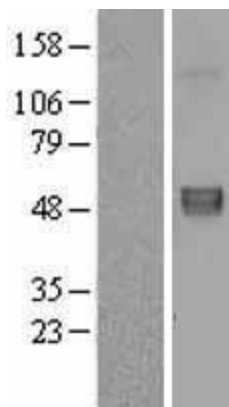
MW: 50.2 kDa

Gene Summary: The protein encoded by this gene is a secreted, extracellular matrix protein containing an Arg-Gly-Asp (RGD) motif and calcium-binding EGF-like domains. It promotes adhesion of endothelial cells through interaction of integrins and the RGD motif. It is prominently expressed in developing arteries but less so in adult vessels. However, its expression is reinduced in balloon-injured vessels and atherosclerotic lesions, notably in intimal vascular smooth muscle cells and endothelial cells. Therefore, the protein encoded by this gene may play a role in vascular development and remodeling. Defects in this gene are a cause of autosomal dominant cutis laxa, autosomal recessive cutis laxa type I (CL type I), and age-related macular degeneration type 3 (ARMD3). [provided by RefSeq, Jul 2008]

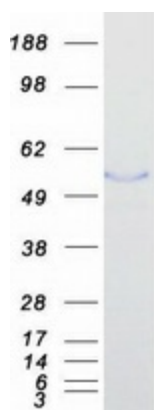
Product images:



Circular map for RC204683



Western blot validation of overexpression lysate (Cat# [LY401904]) using anti-DDK antibody (Cat# [TA50011-100]). Left: Cell lysates from untransfected HEK293T cells; Right: Cell lysates from HEK293T cells transfected with RC204683 using transfection reagent MegaTran 2.0 (Cat# [TT210002]).



Coomassie blue staining of purified FBLN5 protein (Cat# [TP304683]). The protein was produced from HEK293T cells transfected with FBLN5 cDNA clone (Cat# RC204683) using MegaTran 2.0 (Cat# [TT210002]).