

## Product datasheet for RC204680

### DARC (ACKR1) (NM\_002036) Human Tagged ORF Clone

#### Product data:

Product Type:	Expression Plasmids
Product Name:	DARC (ACKR1) (NM_002036) Human Tagged ORF Clone
Tag:	Myc-DDK
Symbol:	DARC
Synonyms:	CCBP1; CD234; DARC; DARC/ACKR1; Dfy; FY; GPD; GpFy; WBCQ1
Mammalian Cell Selection:	Neomycin
Vector:	pCMV6-Entry (PS100001)
E. coli Selection:	Kanamycin (25 ug/mL)
ORF Nucleotide Sequence:	>RC204680 ORF sequence Red=Cloning site Blue=ORF Green=Tags(s)

TTTTGTAATACGACTCACTATAGGGCGCCGGGAATTCGTCGACTGGATCCGGTACCGAGGAGATCTGCC  
GCC**CGCATCGCC**

ATGGGGAAGTGTCTGCACAGGGCGGAGCTCTCCCCCTCAACTGAGAAGTCAAGTCAGCTGGACTTCGAAG  
ATGTATGGAATCTTCTATGGTGTGAATGATTCTTCCAGATGGAGACTATGGTGCCAACCTGGAAGC  
AGCTGCCCTGCCACTCTGTAACTGCTGGATGACTCTGCACTGCCCTTCTTCATCTCACCAGTGTC  
CTGGGTATCCTAGCTAGCAGCACTGTCTTCTCATGCTTTTCAGACCTCTCTCCGCTGGCAGCTCTGCC  
CTGGCTGGCTGTCTGGCACAGCTGGGTGGGCGAGTGCCTCTCAGCATTGGTGGCCGCTTGGC  
CCAGGGCTAGGTAGCACTCGCAGCTCTGCCCTGTGTAGCCTGGGCTACTGTGTCTGGTATGGCTACGCC  
TTTGCCAGGCTTTGCTGCTAGGGTGCCATGCCTCCCTGGGCCACAGACTGGGTGCAGGCCAGGTCCAG  
GCCTCACCTGGGGCTCACTGTGGGAATTTGGGGAGTGGCTGCCCTACTGACACTGCCTGTACCCTGGC  
CAGTGGTGCTTCTGGTGGACTCTGCACCCTGATATACAGCACGGAGCTGAAGGCTTTGCAGGCCACACAC  
ACTGTAGCCTGTCTTGCCATCTTTGTCTTGTGCCATTGGGTTTGGTGGAGCCAAGGGGCTGAAGAAGG  
CATTGGGTATGGGGCCAGGCCCTGGATGAACATCCTGTGGGCCCTGGTTATTTTCTGGTGGCCTCATGG  
GGTGGTTCTAGGACTGGATTTCTGGTGGGTCGAAGCTGTTGCTGTTGTCAACATGTCTGGCCCAGCAG  
GCTCTGGACCTGCTGTAACCTGGCAGAAGCCCTGGCAATTTTGCACTGTGGCTACGCCCTGCTCC  
TCGCCCTATTCTGCCACCAGGCCACCCGACCCCTTGGCCCTCTCTGCCCTCCCTGAAGGATGGTTTTTC  
TCATCTGGACACCCTTGAAGCAAATCC

**ACGCGT**ACGCGGCCGCTCGAGCAGAAACTCATCTCAGAAGAGGATCTGGCAGCAAATGATATCCTGGATT  
ACAAGGATGACGACGATAAGGTTTAA



[View online »](#)

**Protein Sequence:** >RC204680 protein sequence  
Red=Cloning site Green=Tags(s)

MGNCLHRAELSPSTENSSQLDFEDVWSSYGVNDSFPDGDYGANLEAAAPCHSCNLLDSSALPFFILTSV  
 LGILASSTVLFMLFRPLFRWQLCPGWVLAQLAVGSALFSIVVPVLAPGLGSTRSSALCSLGYCVWYGSA  
 FAQALLLGCHASLGHRLGAGQVPGLTLGLTVGIWGVAAALLTLPVTLASGASGGLCTLIYSTELKALQATH  
 TVACLAIFVLLPLGLFGAKGLKKALGMGPGPMMNILWAWFIFWWPHGVVLGLDFLVRSKLLLLSTCLAQQ  
 ALDLLLLNLAELAILHCVATPLLLALFCHQATRLLPSLPLPEGWFSHLDTLGSKS

TRTRPLEQKLISEEDLAANDILDYKDDDDKV

**Chromatograms:** [https://cdn.origene.com/chromatograms/mk6178\\_e10.zip](https://cdn.origene.com/chromatograms/mk6178_e10.zip)

**Restriction Sites:** SgfI-MluI

**Cloning Scheme:**



**ACCN:** NM\_002036

**ORF Size:** 1008 bp

**OTI Disclaimer:** The molecular sequence of this clone aligns with the gene accession number as a point of reference only. However, individual transcript sequences of the same gene can differ through naturally occurring variations (e.g. polymorphisms), each with its own valid existence. This clone is substantially in agreement with the reference, but a complete review of all prevailing variants is recommended prior to use. [More info](#)

**OTI Annotation:** This clone was engineered to express the complete ORF with an expression tag. Expression varies depending on the nature of the gene.

**Components:** The ORF clone is ion-exchange column purified and shipped in a 2D barcoded Matrix tube containing 10ug of transfection-ready, dried plasmid DNA (reconstitute with 100 ul of water).

**Reconstitution Method:**

1. Centrifuge at 5,000xg for 5min.
2. Carefully open the tube and add 100ul of sterile water to dissolve the DNA.
3. Close the tube and incubate for 10 minutes at room temperature.
4. Briefly vortex the tube and then do a quick spin (less than 5000xg) to concentrate the liquid at the bottom.
5. Store the suspended plasmid at -20°C. The DNA is stable for at least one year from date of shipping when stored at -20°C.

**RefSeq:** [NM\\_002036.4](#)

**RefSeq Size:** 2024 bp

**RefSeq ORF:** 1011 bp

**Locus ID:** 2532

**UniProt ID:** [Q16570](#)

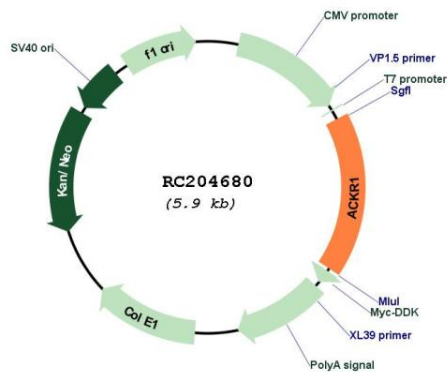
**Cytogenetics:** 1q23.2

**Protein Families:** Druggable Genome, GPCR, Transmembrane

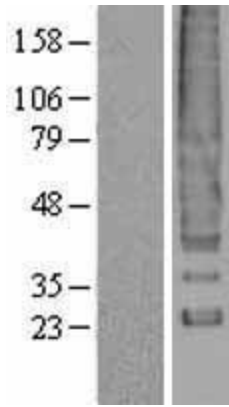
**MW:** 35.6 kDa

**Gene Summary:** The protein encoded by this gene is a glycosylated membrane protein and a non-specific receptor for several chemokines. The encoded protein is the receptor for the human malarial parasites *Plasmodium vivax* and *Plasmodium knowlesi*. Polymorphisms in this gene are the basis of the Duffy blood group system. Two transcript variants encoding different isoforms have been found for this gene. [provided by RefSeq, Jul 2008]

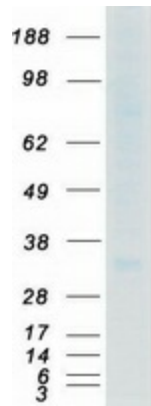
### Product images:



Circular map for RC204680



Western blot validation of overexpression lysate (Cat# [LY400744]) using anti-DDK antibody (Cat# [TA50011-100]). Left: Cell lysates from untransfected HEK293T cells; Right: Cell lysates from HEK293T cells transfected with RC204680 using transfection reagent MegaTran 2.0 (Cat# [TT210002]).



Coomassie blue staining of purified ACKR1 protein (Cat# [TP304680]). The protein was produced from HEK293T cells transfected with ACKR1 cDNA clone (Cat# RC204680) using MegaTran 2.0 (Cat# [TT210002]).