

Product datasheet for **RC204679**

Apolipoprotein M (APOM) (NM_019101) Human Tagged ORF Clone

Product data:

Product Type: Expression Plasmids
Product Name: Apolipoprotein M (APOM) (NM_019101) Human Tagged ORF Clone
Tag: Myc-DDK
Symbol: Apolipoprotein M
Synonyms: apo-M; G3a; HSPC336; NG20
Mammalian Cell Selection: Neomycin
Vector: pCMV6-Entry (PS100001)
E. coli Selection: Kanamycin (25 ug/mL)
ORF Nucleotide Sequence: >RC204679 representing NM_019101
 Red=Cloning site Blue=ORF Green=Tags(s)

TTTTGTAATACGACTCACTATAGGGCGGCCGGAATTCGTCGACTGGATCCGGTACCGAGGAGATCTGCC
 GCC**CGATCGCC**

ATGTTCCACAAATTTGGGCAGCTCTGCTCTACTTCTATGGTATTATCCTTAACCTCCATCTACCAGTGCC
 CTGAGCACAGTCAACTGACAACCTCTGGGCGTGGATGGGAAGGAGTCCAGAGGTCCACTGGGCCAGTG
 GACTTTATCGCAGGGGAGCTCCACCAAGGAGGAGTTGGCAACTTTTGACCCTGTGGACAACATTGTC
 TTCAATATGGCTGCTGGCTCTGCCCCGATGCAGCTCCACCTTCGTGCTACCATCCGCATGAAAGATGGGC
 TCTGTGTGCCCGAAATGGATCTACCACCTGACTGAAGGGAGCACAGATCTCAGAAGTGAAGGCCGCC
 TGACATGAAGACTGAGCTCTTTCCAGCTCATGCCAGGTGGAATCATGCTGAATGAGACAGGCCAGGGT
 TACCAGCGCTTTCTCCTCTACAATCGCTCACCACATCCTCCCGAAAAGTGTGTGGAGGAATTCAAGTCCC
 TGACTTCTGCCTGGACTCCAAAGCCTTCTATTGACTCTAGGAATCAAGAGGCCTGTGAGCTGTCCAA
 TAAC

ACGCGTACGCGGCCGCTCGAGCAGAACTCATCTCAGAAGAGGATCTGGCAGCAATGATATCCTGGATT
 ACAAGGATGACGACGATAAGGTTTAA

Protein Sequence: >RC204679 representing NM_019101
 Red=Cloning site Green=Tags(s)

MFHQIWAALLYFYGIILNSIQCPHSQLTTLGVDGKEFPEVHLGQWYFIAGAAPTKEELATFDPVDNIV
 FNMAAGSAPMLHLRATIRMKDGLCVPRKWIYHLTEGSTDLRTEGRPDMKTELFSSSCPGGIMLNETGQG
 YQRFLLYNRSPHPPEKCVVEEFKSLTSCLDKAFLLTPRNQEAACELSN

TRTRPLEQKLISEEDLAANDILDYKDDDDKV



[View online »](#)

Chromatograms: https://cdn.origene.com/chromatograms/mg2611_d10.zip

Restriction Sites: SgfI-MluI

Cloning Scheme:



ACCN: NM_019101

ORF Size: 564 bp

OTI Disclaimer: The molecular sequence of this clone aligns with the gene accession number as a point of reference only. However, individual transcript sequences of the same gene can differ through naturally occurring variations (e.g. polymorphisms), each with its own valid existence. This clone is substantially in agreement with the reference, but a complete review of all prevailing variants is recommended prior to use. [More info](#)

OTI Annotation: This clone was engineered to express the complete ORF with an expression tag. Expression varies depending on the nature of the gene.

Components: The ORF clone is ion-exchange column purified and shipped in a 2D barcoded Matrix tube containing 10ug of transfection-ready, dried plasmid DNA (reconstitute with 100 ul of water).

Reconstitution Method:

1. Centrifuge at 5,000xg for 5min.
2. Carefully open the tube and add 100ul of sterile water to dissolve the DNA.
3. Close the tube and incubate for 10 minutes at room temperature.
4. Briefly vortex the tube and then do a quick spin (less than 5000xg) to concentrate the liquid at the bottom.
5. Store the suspended plasmid at -20°C. The DNA is stable for at least one year from date of shipping when stored at -20°C.

RefSeq: [NM_019101.3](#)

RefSeq Size: 790 bp

RefSeq ORF: 567 bp

Locus ID: 55937

UniProt ID: [O95445](#)

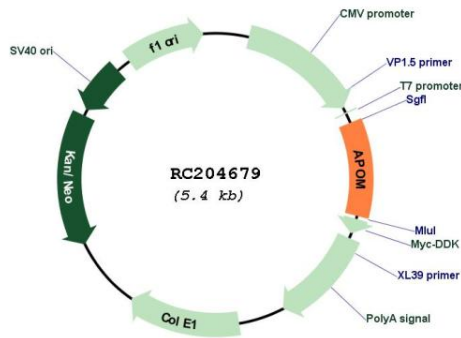
Cytogenetics: 6p21.33

Protein Families: Secreted Protein

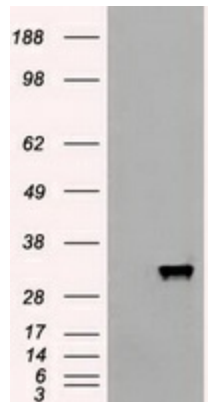
MW: 21.1 kDa

Gene Summary: The protein encoded by this gene is an apolipoprotein and member of the lipocalin protein family. It is found associated with high density lipoproteins and to a lesser extent with low density lipoproteins and triglyceride-rich lipoproteins. The encoded protein is secreted through the plasma membrane but remains membrane-bound, where it is involved in lipid transport. Alternate splicing results in both coding and non-coding variants of this gene. [provided by RefSeq, Jan 2012]

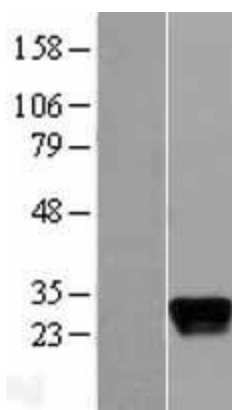
Product images:



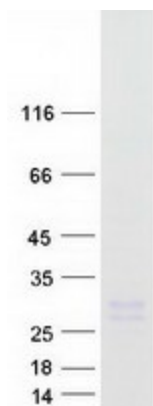
Circular map for RC204679



HEK293T cells were transfected with the pCMV6-ENTRY control (Cat# [PS100001], Left lane) or pCMV6-ENTRY APOM (Cat# RC204679, Right lane) cDNA for 48 hrs and lysed. Equivalent amounts of cell lysates (5 ug per lane) were separated by SDS-PAGE and immunoblotted with anti-APOM (Cat# [TA500074]). Positive lysates [LY402735] (100ug) and [LC402735] (20ug) can be purchased separately from OriGene.



Western blot validation of overexpression lysate (Cat# [LY402735]) using anti-DDK antibody (Cat# [TA50011-100]). Left: Cell lysates from un-transfected HEK293T cells; Right: Cell lysates from HEK293T cells transfected with RC204679 using transfection reagent MegaTran 2.0 (Cat# [TT210002]).



Coomassie blue staining of purified APOM protein (Cat# [TP304679]). The protein was produced from HEK293T cells transfected with APOM cDNA clone (Cat# RC204679) using MegaTran 2.0 (Cat# [TT210002]).