

Product datasheet for **RC204678**

CD300C (NM_006678) Human Tagged ORF Clone

Product data:

Product Type:	Expression Plasmids
Product Name:	CD300C (NM_006678) Human Tagged ORF Clone
Tag:	Myc-DDK
Symbol:	CD300C
Synonyms:	CLM-6; CMRF-35; CMRF-35A; CMRF35; CMRF35-A1; CMRF35A; CMRF35A1; IGSF16; LIR
Mammalian Cell Selection:	Neomycin
Vector:	pCMV6-Entry (PS100001)
E. coli Selection:	Kanamycin (25 ug/mL)
ORF Nucleotide Sequence:	>RC204678 ORF sequence Red=Cloning site Blue=ORF Green=Tags(s)

TTTTGTAATACGACTCACTATAGGGCGGCCGGAATTCGTCGACTGGATCCGGTACCGAGGAGATCTGCC
GCC**CGATCGCC**

ATGACTGCCAGGGCCTGGGCCTCGTGGCGGTCTTCAGCTCTGCTCCTCCTGCTTGTCCCAGGCTATTTTC
CTCTGAGCCACCCCATGACCGTGGCGGGCCCCGTGGGGGATCCCTGAGTGTGCAGTGTGCTATGAGAA
GGAACACAGGACCCTCAACAAATCTGGTGCAGACCACACAGATTCTCCGATGTGACAAGATTGTGGAG
ACCAAAGGGTCAAGAGGAAAAGGAATGGCCGAGTGTCCATCAGGGACAGTCTGCAAACCTCAGCTTCA
CAGTGACCCTGGAGAATCTCACAGAGGAGGACGCAGGCACCTACTGGTGTGGGTGGATACACCGTGGCT
CCGAGACTTTCATGATCCATTGTCGAGGTTGAGGTGTCCGTGTTCCCGCCGGGACGACCACAGCCTCC
AGCCCCAGAGCTCCATGGGCACCTCAGGTCTCCACGAAGCTGCCCGTGCACACCTGGCCAGCGTGA
CCAGAAAGGACAGCCCCGAACCCAGCCACACCCTGGCTCCCTGTTCAGCAATGTCCGCTTCTGCTCCT
GGTCTCTTGGAGCTGCCCTGCTCCTGAGCATGCTGGGTGCCGTCTCTGGGTGAACAGACCTCAGAGA
AGCTCTAGAAGCAGGCAGAATTGGCCCAAGGGTGAGAACCAG

ACGCGTACGCGGGCGCTCGAGCAGAAACTCATCTCAGAAGAGGATCTGGCAGCAATGATATCCTGGATT
ACAAGGATGACGACGATAAGGTTTAA



[View online »](#)

Protein Sequence: >RC204678 protein sequence
Red=Cloning site Green=Tags(s)

MTARAWASWRSSALLLLLVPGYFPLSHPMTVAGPVGGSLSVQCRYEKEHRTLNFKFCRPPQILRCDKIVE
 TKGSAGKRNGRVSIRDSPANLSFTVTLENL TEEDAGTYWCGVDPWLRDFHDPIVEVEVSVFPAGTTTAS
 SPQSSMGTS GPPTKLPVHTWPSVTRKDSPEPSPHPGSLFSNVRFLLLVLELPLLLSMLGAVLWVNRPQR
 SSRSRQNWPKGENQ

TRTRPLEQKLI SEEDLAANDILDYKDDDDKV

Chromatograms: https://cdn.origene.com/chromatograms/mk6438_f06.zip

Restriction Sites: SgfI-MluI

Cloning Scheme:



ACCN: NM_006678

ORF Size: 672 bp

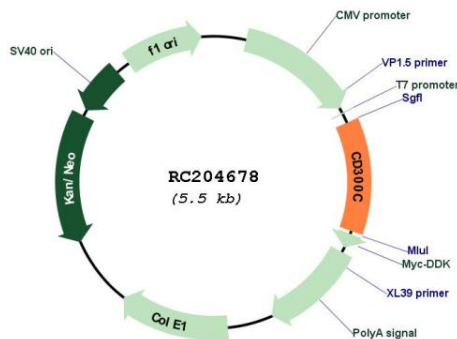
OTI Disclaimer: Due to the inherent nature of this plasmid, standard methods to replicate additional amounts of DNA in E. coli are highly likely to result in mutations and/or rearrangements. Therefore, OriGene does not guarantee the capability to replicate this plasmid DNA. Additional amounts of DNA can be purchased from OriGene with batch-specific, full-sequence verification at a reduced cost. Please contact our customer care team at custsupport@origene.com or by calling 301.340.3188 option 3 for pricing and delivery.

The molecular sequence of this clone aligns with the gene accession number as a point of reference only. However, individual transcript sequences of the same gene can differ through naturally occurring variations (e.g. polymorphisms), each with its own valid existence. This clone is substantially in agreement with the reference, but a complete review of all prevailing variants is recommended prior to use. [More info](#)

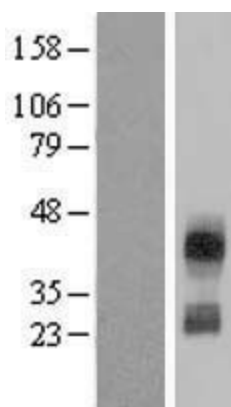
OTI Annotation: This clone was engineered to express the complete ORF with an expression tag. Expression varies depending on the nature of the gene.

Components:	The ORF clone is ion-exchange column purified and shipped in a 2D barcoded Matrix tube containing 10ug of transfection-ready, dried plasmid DNA (reconstitute with 100 ul of water).
Reconstitution Method:	<ol style="list-style-type: none"> 1. Centrifuge at 5,000xg for 5min. 2. Carefully open the tube and add 100ul of sterile water to dissolve the DNA. 3. Close the tube and incubate for 10 minutes at room temperature. 4. Briefly vortex the tube and then do a quick spin (less than 5000xg) to concentrate the liquid at the bottom. 5. Store the suspended plasmid at -20°C. The DNA is stable for at least one year from date of shipping when stored at -20°C.
RefSeq:	<u>NM_006678.5</u>
RefSeq Size:	1602 bp
RefSeq ORF:	675 bp
Locus ID:	10871
UniProt ID:	<u>Q08708</u>
Cytogenetics:	17q25.1
Protein Families:	Druggable Genome, Transmembrane
MW:	24.8 kDa
Gene Summary:	The CMRF35 antigen, which was identified by reactivity with a monoclonal antibody, is present on monocytes, neutrophils, and some T and B lymphocytes (Jackson et al., 1992 [PubMed 1349532]).[supplied by OMIM, Mar 2008]

Product images:



Circular map for RC204678



Western blot validation of overexpression lysate (Cat# [LY416481]) using anti-DDK antibody (Cat# [TA50011-100]). Left: Cell lysates from untransfected HEK293T cells; Right: Cell lysates from HEK293T cells transfected with RC204678 using transfection reagent MegaTran 2.0 (Cat# [TT210002]).