

## Product datasheet for **RC204674**

### Galectin 1 (LGALS1) (NM\_002305) Human Tagged ORF Clone

#### Product data:

Product Type:	Expression Plasmids
Product Name:	Galectin 1 (LGALS1) (NM_002305) Human Tagged ORF Clone
Tag:	Myc-DDK
Symbol:	Galectin 1
Synonyms:	GAL1; GBP
Mammalian Cell Selection:	Neomycin
Vector:	pCMV6-Entry (PS100001)
E. coli Selection:	Kanamycin (25 ug/mL)
ORF Nucleotide Sequence:	>RC204674 ORF sequence Red=Cloning site Blue=ORF Green=Tags(s)

TTTGTGTAATACGACTCACTATAGGGCGGCCGGAATTCGTCGACTGGATCCGGTACCGAGGAGATCTGCC  
 GCC**CGATCGC**C

ATGGCTTGTGGTCTGGTCGCCAGCAACCTGAATCTCAAACCTGGAGAGTGCCTTCGAGTGCAGGCGGAGG  
 TGGCTCCTGACGCTAAGAGCTTCGTGCTGAACCTGGGCAAAGACAGCAACAACCTGTGCCTGCACCTTCAA  
 CCCTCGCTTCAACGCCACGGCGACGCCAACACCATCGTGTGCAACAGCAAGGACGGCGGGGCTGGGGG  
 ACCGAGCAGCGGGAGGCTGTCTTCCCTTCCAGCCTGGAAGTGTTCAGAGGTGTGCATCACCTTCGACC  
 AGGCCAACCTGACCGTCAAGCTGCCAGATGGATACGAATTCAGTTCCCAACCGCCTCAACCTGGAGGC  
 CATCAACTACATGGCAGCTGACGGTGACTTCAAGATCAAATGTGTGGCCTTTGAC

**ACGCGT**ACGCGGCCGCTCGAGCAGAACTCATCTCAGAAGAGGATCTGGCAGCAAATGATATCCTGGATT  
 ACAAGGATGACGACGATAAGGTTTAA

Protein Sequence:	>RC204674 protein sequence Red=Cloning site Green=Tags(s)
-------------------	--

MACGLVASNLNLKPGECLRVRGVAPDAKSFVLNLGKDSNNLCLHFNPRFNAHGDANTIVCNSKDGGAWG  
 TEQREAVFPFQPGSVAEVCITFDQANLTVKLPDGYEFKFPNRLNLEAINYMAADGDFKIKCVAFD

**TR**TRPLEQKLISEEDLAANDILDYKDDDDKV

Chromatograms:	<a href="https://cdn.origene.com/chromatograms/mk6069_a12.zip">https://cdn.origene.com/chromatograms/mk6069_a12.zip</a>
----------------	---

Restriction Sites:	Sgfl-MluI
--------------------	-----------


[View online »](#)

## Cloning Scheme:



ACCN: NM\_002305

ORF Size: 405 bp

OTI Disclaimer: Due to the inherent nature of this plasmid, standard methods to replicate additional amounts of DNA in E. coli are highly likely to result in mutations and/or rearrangements. Therefore, OriGene does not guarantee the capability to replicate this plasmid DNA. Additional amounts of DNA can be purchased from OriGene with batch-specific, full-sequence verification at a reduced cost. Please contact our customer care team at [custsupport@origene.com](mailto:custsupport@origene.com) or by calling 301.340.3188 option 3 for pricing and delivery.

The molecular sequence of this clone aligns with the gene accession number as a point of reference only. However, individual transcript sequences of the same gene can differ through naturally occurring variations (e.g. polymorphisms), each with its own valid existence. This clone is substantially in agreement with the reference, but a complete review of all prevailing variants is recommended prior to use. [More info](#)

OTI Annotation: This clone was engineered to express the complete ORF with an expression tag. Expression varies depending on the nature of the gene.

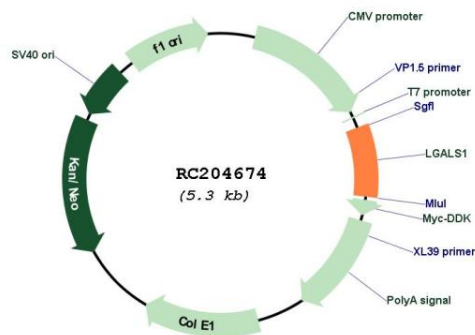
Components: The ORF clone is ion-exchange column purified and shipped in a 2D barcoded Matrix tube containing 10ug of transfection-ready, dried plasmid DNA (reconstitute with 100 ul of water).

Reconstitution Method:

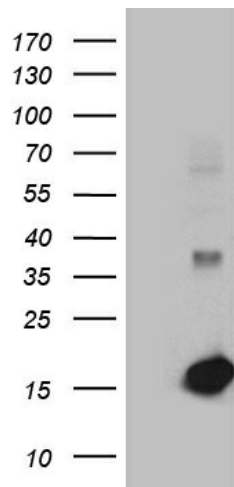
1. Centrifuge at 5,000xg for 5min.
2. Carefully open the tube and add 100ul of sterile water to dissolve the DNA.
3. Close the tube and incubate for 10 minutes at room temperature.
4. Briefly vortex the tube and then do a quick spin (less than 5000xg) to concentrate the liquid at the bottom.
5. Store the suspended plasmid at -20°C. The DNA is stable for at least one year from date of shipping when stored at -20°C.

<b>Note:</b>	Plasmids are not sterile. For experiments where strict sterility is required, filtration with 0.22um filter is required.
<b>RefSeq:</b>	<a href="#">NM_002305.4</a>
<b>RefSeq Size:</b>	586 bp
<b>RefSeq ORF:</b>	408 bp
<b>Locus ID:</b>	3956
<b>UniProt ID:</b>	<a href="#">P09382</a>
<b>Cytogenetics:</b>	22q13.1
<b>Domains:</b>	Gal-bind_lectin
<b>Protein Families:</b>	Druggable Genome
<b>MW:</b>	14.7 kDa
<b>Gene Summary:</b>	The galectins are a family of beta-galactoside-binding proteins implicated in modulating cell-cell and cell-matrix interactions. This gene product may act as an autocrine negative growth factor that regulates cell proliferation. [provided by RefSeq, Jul 2008]

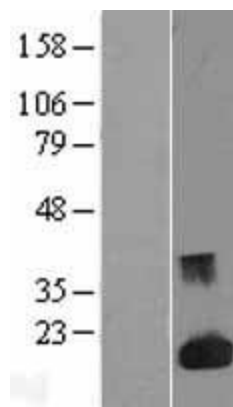
## Product images:



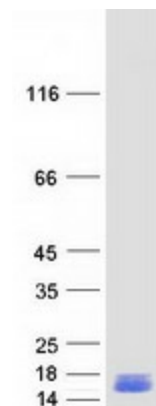
Circular map for RC204674



HEK293T cells were transfected with the pCMV6-ENTRY control (Cat# [PS100001], Left lane) or pCMV6-ENTRY LGALS1 (Cat# RC204674, Right lane) cDNA for 48 hrs and lysed. Equivalent amounts of cell lysates (5 ug per lane) were separated by SDS-PAGE and immunoblotted with anti-LGALS1 (Cat# [TA810852])(1:2000). Positive lysates [LY400833] (100ug) and [LC400833] (20ug) can be purchased separately from OriGene.



Western blot validation of overexpression lysate (Cat# [LY400833]) using anti-DDK antibody (Cat# [TA50011-100]). Left: Cell lysates from untransfected HEK293T cells; Right: Cell lysates from HEK293T cells transfected with RC204674 using transfection reagent MegaTran 2.0 (Cat# [TT210002]).



Coomassie blue staining of purified LGALS1 protein (Cat# [TP304674]). The protein was produced from HEK293T cells transfected with LGALS1 cDNA clone (Cat# RC204674) using MegaTran 2.0 (Cat# [TT210002]).