

Product datasheet for **RC204653**

GIMAP4 (NM_018326) Human Tagged ORF Clone

Product data:

Product Type:	Expression Plasmids
Product Name:	GIMAP4 (NM_018326) Human Tagged ORF Clone
Tag:	Myc-DDK
Symbol:	GIMAP4
Synonyms:	IAN-1; IAN1; IMAP4; MSTP062
Mammalian Cell Selection:	Neomycin
Vector:	pCMV6-Entry (PS100001)
E. coli Selection:	Kanamycin (25 ug/mL)
ORF Nucleotide Sequence:	>RC204653 ORF sequence Red=Cloning site Blue=ORF Green=Tags(s)

TTTTGTAATACGACTCACTATAGGGCGGCCGGAATTCGTCGACTGGATCCGGTACCGAGGAGATCTGCC
GCC**CGCATCGCC**

ATGGCAGCCCAATACGGCAGTATGAGCTTCAACCCAGCACACCAGGGGCCAGTTATGGGCCTGGAAGGC
AAGAGCCAGAAATCCCAATTGAGAATTGTGTTAGTGGGTAACCCGGAGCAGGAAAAAGTGAACAGG
AAACAGCATCCTGGCCGAAAGTGTTCATTCTGGCACTGCAGCAAAATCCATTACCAAGAAGTGTGAG
AAACGCAGCAGCTCATGGAAGGAAACAGAACTTGTCTGATTTGACACACCAGGCATTTTCGACACAGAGG
TGCCCAATGCTGAAACGTCCAAGGAGATTATTCGCTGCATTCTTCTGACCTCCCCAGGGCCTCATGCTCT
GCTTCTGGTGGTTCCACTGGGCCGTTACTACTGAGGAGGAGCACAAAGCCACAGAGAAGATCCTGAAAATG
TTTGGAGAGAGGGCTAGAAGTTTCATGATTCTCATATTCACCCGAAAGATGACTTAGGTGACACCAATT
TGCATGACTACTTAAGGGAAGCTCCAGAAGACATTCAAGACTTGTGGACATTTTCGGTGACCGCTACTG
TGCGTTAAACAACAAGGCAACAGGCGCTGAGCAGGAGGCCAGAGGGCACAGTTGCTGGGCCTGATCCAG
CGCGTGGTGAGGGAGAACAAGGAAGGCTGCTACACTAATAGGATGTACCAAAGGGCGGAGGAGATCC
AGAAGCAAACAAGCAATGCAAGAATCCACAGAGTGGAGCTGGAGAGAGAGAAAGCGCGGATAAGAGA
GGAGTATGAAGAGAAAAATCAGAAAGCTGGAAGATAAAGTGGAGCAGGAAAAGAGAAAGAAGCAATGGAG
AAGAACTAGCAGAACAGGAGGCTCACTATGCTGTAAGGCAGCAAAGGGCAAGAACCGGAAGTGGAGAGTA
AGGATGGGATACTTGAATTAATCATGACAGCGTTACAGATTGCTTCTCTTTATTTTGTACGCTGTTCGC
GGAAGAT

ACGCGTACGCGGCCGCTCGAGCAGAACTCATCTCAGAAGAGGATCTGGCAGCAAATGATATCCTGGATT
ACAAGGATGACGACGATAAGGTTTAA



[View online »](#)

Protein Sequence: >RC204653 protein sequence
Red=Cloning site Green=Tags(s)

```

MAAQYGSMFNPSTPGASYGPGRQEPRNSQLRIVLVGKTGAGKSATGNSILGRKVFHSGTAAKSITKKCE
KRSSSWKETELVVVDTPGIFDTEVPNAETSKEIIRCILLTSPGPHALLLVPLGRYTEEEHKATEKILKM
FGERARSMILIFTRKDDLGDNLHDYLRAPEDIQDLMDIFGDRCALNNKATGAEQEAQRAQLLGLIQ
RVVRENKEGCTNRMVQRAEEEEIQKQTQAMQELHRVELEREKARIREEYEEKIRKLEDKVEQEKRKKQME
KKLAEQEAHYAVRQQRARTEVESKDGILELIMTALQIASFILLRLFAED
  
```

TRTRPLEQKLISEEDLAANDILDYKDDDDKV

Chromatograms: https://cdn.origene.com/chromatograms/mk6438_e02.zip

Restriction Sites: SgfI-MluI

Cloning Scheme:



ACCN: NM_018326

ORF Size: 987 bp

OTI Disclaimer: The molecular sequence of this clone aligns with the gene accession number as a point of reference only. However, individual transcript sequences of the same gene can differ through naturally occurring variations (e.g. polymorphisms), each with its own valid existence. This clone is substantially in agreement with the reference, but a complete review of all prevailing variants is recommended prior to use. [More info](#)

OTI Annotation: This clone was engineered to express the complete ORF with an expression tag. Expression varies depending on the nature of the gene.

Components: The ORF clone is ion-exchange column purified and shipped in a 2D barcoded Matrix tube containing 10ug of transfection-ready, dried plasmid DNA (reconstitute with 100 ul of water).

Reconstitution Method:

1. Centrifuge at 5,000xg for 5min.
2. Carefully open the tube and add 100ul of sterile water to dissolve the DNA.
3. Close the tube and incubate for 10 minutes at room temperature.
4. Briefly vortex the tube and then do a quick spin (less than 5000xg) to concentrate the liquid at the bottom.
5. Store the suspended plasmid at -20°C. The DNA is stable for at least one year from date of shipping when stored at -20°C.

RefSeq: [NM_018326.3](#)

RefSeq Size: 1983 bp

RefSeq ORF: 990 bp

Locus ID: 55303

UniProt ID: [Q9NUV9](#)

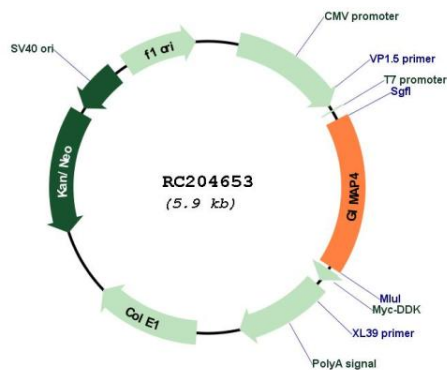
Cytogenetics: 7q36.1

Domains: AIG1

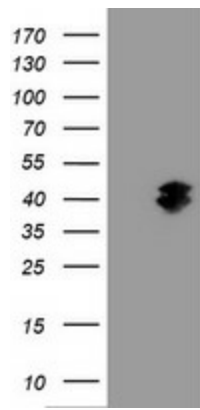
MW: 37.5 kDa

Gene Summary: This gene encodes a protein belonging to the GTP-binding superfamily and to the immuno-associated nucleotide (IAN) subfamily of nucleotide-binding proteins. The encoded protein of this gene may be negatively regulated by T-cell acute lymphocytic leukemia 1 (TAL1). In humans, the IAN subfamily genes are located in a cluster at 7q36.1. [provided by RefSeq, Jul 2008]

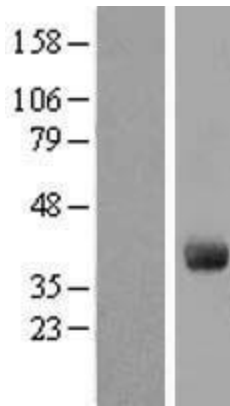
Product images:



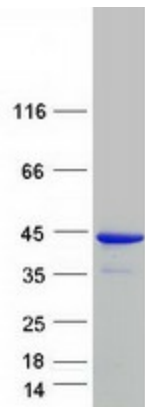
Circular map for RC204653



HEK293T cells were transfected with the pCMV6-ENTRY control (Cat# [PS100001], Left lane) or pCMV6-ENTRY GIMAP4 (Cat# RC204653, Right lane) cDNA for 48 hrs and lysed. Equivalent amounts of cell lysates (5 ug per lane) were separated by SDS-PAGE and immunoblotted with anti-GIMAP4(Cat# [TA504785]). Positive lysates [LY413123] (100ug) and [LC413123] (20ug) can be purchased separately from OriGene.



Western blot validation of overexpression lysate (Cat# [LY413123]) using anti-DDK antibody (Cat# [TA50011-100]). Left: Cell lysates from untransfected HEK293T cells; Right: Cell lysates from HEK293T cells transfected with RC204653 using transfection reagent MegaTran 2.0 (Cat# [TT210002]).



Coomassie blue staining of purified GIMAP4 protein (Cat# [TP304653]). The protein was produced from HEK293T cells transfected with GIMAP4 cDNA clone (Cat# RC204653) using MegaTran 2.0 (Cat# [TT210002]).