

Product datasheet for **RC204651**

RAB8B (NM_016530) Human Tagged ORF Clone

Product data:

Product Type: Expression Plasmids
Product Name: RAB8B (NM_016530) Human Tagged ORF Clone
Tag: Myc-DDK
Symbol: RAB8B
Mammalian Cell Selection: Neomycin
Vector: pCMV6-Entry (PS100001)
E. coli Selection: Kanamycin (25 ug/mL)
ORF Nucleotide Sequence: >RC204651 ORF sequence
Red=Cloning site Blue=ORF Green=Tags(s)

TTTTGTAATACGACTCACTATAGGGCGGCCGGAATTCGTCGACTGGATCCGGTACCGAGGAGATCTGCC
GCC**CGATCGCC**

ATGGCGAAGACGTACGATTATCTCTTCAAGCTCCTGCTGATCGGCGACTCGGGGTAGGCAAGACCTGCC
TCCTGTTCCGCTTCTCAGAGGACGCCTTCAACACCACCTTCATCTCCACCATCGGAATTGATTTTAAAT
TAGAACGATAGAAGTATGAAAGAAAATTAAGCTTCAGATATGGGACACAGCGGTCAGGAAAGATTC
CGAACATCACGACAGCGTACTACAGAGGACCATGGGCATTATGCTGGTCTATGACATCACAAATGAAA
AATCCTTTGACAATATTAATAATTTGGATCAGAAACATTGAAGAGCATGCCTCTCCGATGTCGAAAGAA
GATCCTGGGTAACAAATGTGATATGAATGACAAAAGACAAGTGTCAAAAGAAAGAGGGGAGAAGCTAGCA
ATTGACTATGGGATTAATTTCTGGAGACAAGCGCAAAATCCAGTGCAAATGTAGAAGAGGCATTTTTTA
CACTTGACGAGATATAATGACAAAACCAACAGAAAAATGAATGACAGCAATTCAGCAGGAGCAGGTGG
ACCAGTGAAAATAACAGAAAACCGATCAAAGAAGACCAGTTTCTTTCGTTGCTCGCTACTT

ACGCGTACGCGGCCGCTCGAGCAGAAACTCATCTCAGAAGAGGATCTGGCAGCAAATGATATCCTGGATT
ACAAGGATGACGACGATAAGGTTTAA

Protein Sequence: >RC204651 protein sequence
Red=Cloning site Green=Tags(s)

MAKTYDYLFKLLLIGDSGVGKTCLLFRFSEDAFNNTTFFISTIGIDFKIRTIELDGKKIKLQIWDTAGQERF
RTITTAYYRGAMGIMLVYDITNEKSFNKNWIRNIEEHASSDVERMILGNKCDMNDKRQVSKERGEKLA
IDYGIKFLSAKSSANVEEAFFTLARDIMTKLNRKMNSNSAGAGGPVKITENRSKKTSSFRCSSL

TRTRPLEQKLISEEDLAANDILDYKDDDDKV

Chromatograms: https://cdn.origene.com/chromatograms/mk6068_h07.zip



[View online »](#)

Restriction Sites: SgfI-MluI

Cloning Scheme:



ACCN: NM_016530

ORF Size: 624 bp

OTI Disclaimer: The molecular sequence of this clone aligns with the gene accession number as a point of reference only. However, individual transcript sequences of the same gene can differ through naturally occurring variations (e.g. polymorphisms), each with its own valid existence. This clone is substantially in agreement with the reference, but a complete review of all prevailing variants is recommended prior to use. [More info](#)

OTI Annotation: This clone was engineered to express the complete ORF with an expression tag. Expression varies depending on the nature of the gene.

Components: The ORF clone is ion-exchange column purified and shipped in a 2D barcoded Matrix tube containing 10ug of transfection-ready, dried plasmid DNA (reconstitute with 100 ul of water).

- Reconstitution Method:
1. Centrifuge at 5,000xg for 5min.
 2. Carefully open the tube and add 100ul of sterile water to dissolve the DNA.
 3. Close the tube and incubate for 10 minutes at room temperature.
 4. Briefly vortex the tube and then do a quick spin (less than 5000xg) to concentrate the liquid at the bottom.
 5. Store the suspended plasmid at -20°C. The DNA is stable for at least one year from date of shipping when stored at -20°C.

RefSeq: [NM_016530.3](#)

RefSeq Size: 4877 bp

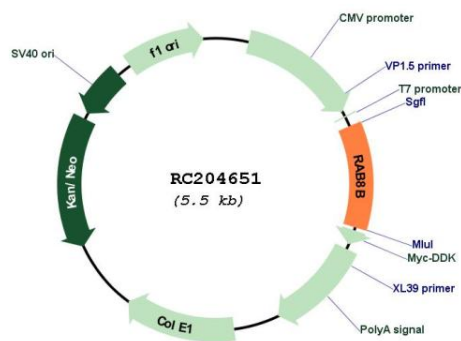
RefSeq ORF: 624 bp

Locus ID: 51762

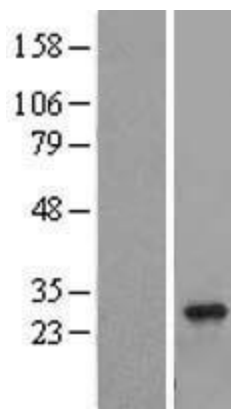
UniProt ID: [Q92930](#)

Cytogenetics: 15q22.2
Domains: ras, RAN, RAS, RHO, RAB, ARF
Protein Families: Druggable Genome
MW: 23.6 kDa
Gene Summary: RAB proteins, like RAB8B, are low molecular mass monomeric GTPases that localize on the cytoplasmic surfaces of distinct membrane-bound organelles. RAB proteins function in intracellular vesicle transport by aiding in the docking and/or fusion of vesicles with their target membranes (summary by Chen et al., 1997 [PubMed 9030196]).[supplied by OMIM, Nov 2010]

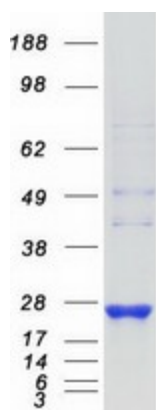
Product images:



Circular map for RC204651



Western blot validation of overexpression lysate (Cat# [LY413924]) using anti-DDK antibody (Cat# [TA50011-100]). Left: Cell lysates from untransfected HEK293T cells; Right: Cell lysates from HEK293T cells transfected with RC204651 using transfection reagent MegaTran 2.0 (Cat# [TT210002]).



Coomassie blue staining of purified RAB8B protein (Cat# [TP304651]). The protein was produced from HEK293T cells transfected with RAB8B cDNA clone (Cat# RC204651) using MegaTran 2.0 (Cat# [TT210002]).