

## Product datasheet for **RC204648**

### PSG6 (NM\_001031850) Human Tagged ORF Clone

#### Product data:

Product Type:	Expression Plasmids
Product Name:	PSG6 (NM_001031850) Human Tagged ORF Clone
Tag:	Myc-DDK
Symbol:	PSG6
Synonyms:	PSBG-6; PSBG-10; PSBG-12; PSG10; PSGGB
Mammalian Cell Selection:	Neomycin
Vector:	pCMV6-Entry (PS100001)
E. coli Selection:	Kanamycin (25 ug/mL)



[View online »](#)

**ORF Nucleotide Sequence:**

>RC204648 ORF sequence  
 Red=Cloning site Blue=ORF Green=Tags(s)

TTTTGTAATACGACTCACTATAGGGCGGCCGGGAATTCGTCGACTGGATCCGGTACCGAGGAGATCTGCC  
 GCC**GCGATCGCC**

ATGGGACCCTCTCAGCCCTCCCTGCACTCAGCACATCACCTGGAAGGGGCTCCTGCTCACAGCATCAC  
 TTTTAAACTTCTGGAACCTGCCACCCTGCCCAAGTAATAATTGAAGCCAAGCCACCCAAAGTTCCGA  
 GGGGAAGGATGTTCTTCTACTTGTCCACAATTTGCCCCAGAATCTTACTGGCTACATCTGGTACAAAGG  
 CAAATGACGGACCTTACCATTACATTACATCATATGTAGTACACGGTCAAATTATATATGGCCTGCCT  
 ACAGTGGACGAGAAACAGTATATTCCAATGCATCCCTGCTGATCCAGAATGTACACAGGAGGATGCAGG  
 ATCCTACACCTTACACATCATAAAGCGAGGCGATGGGACTGGAGGAGTAACTGGATATTTCACTGTCACC  
 TTATACTCGGAGACTCCCAAGCCCTCCATCTCCAGCAGCAACTTAAACCCAGGGAGGTCATGGAGGCTG  
 TCGCTTAATCTGTGATCCTGAGACTCCGGATGCAAGCTACCTGTGGTTGCTGAATGGTCAGAACCTCCC  
 TATGACTCACAGTTGCAGCTGTCCAAAACCAACAGGACCCTCTATCTATTTGGTGTACAAAGTATATT  
 GCAGGACCCTATGAATGTGAAATACGGAACCCAGTGAGTGCCAGCCGAGTGACCCAGTACCCTGAATC  
 TCCTCCCGAAGCTGCCATGCCTTACATCACCATCAACAACCTTAAACCCAGGGAGAAGAAGGATGTGTT  
 AGCCTTACCTGTGAACCTAAGAGTCGGAACCTACACCTACATTTGGTGGCTAAATGGTCAGAGCCTCCCG  
 GTCAGTCCGAGGGTAAAGCGACCCATTGAAAACAGGATACTCATTCTACCCAGTGTACAGAGAAATGAAA  
 CAGGACCCTATCAATGTGAAATACGGGACCGATATGGTGGCATCCGCAGTAACCCAGTACCCTGAATGT  
 CCTCTATGGTCCAGACCTCCCAGAAATTAACCTTCATTACCTATTACCGTTACAGGAGAAAACCTCGAC  
 TTGTCTGCTTTGCGGACTCTAACCCACCGCAGAGTATTCTTGGACAATTAATGGGAAGTTTCAGTAT  
 CAGGACAAAAGCTCTTTATCCCCAAATTAACAATCATAGCGGGCTCTATGCTTGTCTGTTCTGTAA  
 CTCAGCCACTGGCAAGGAAATCTCCAAATCCATGATAGTCAAAGTCTCTGGTCCCTGCCATGGAAACCAG  
 ACAGAGTCTCAT

**ACGCGT**ACGCGGCCGCTCGAGCAGAAACTCATCTCAGAAGAGGATCTGGCAGCAAATGATATCCTGGATT  
 ACAAGGATGACGACGATAAGGTTTAA

**Protein Sequence:**

>RC204648 protein sequence  
 Red=Cloning site Green=Tags(s)

MGPLSAPPCTQHITWKLLLLTASLLNFWNLPTTAQVIIIEAKPPKVSEKDVLLL VHNLPQNL TGYIWK  
 QMTDL YHYITSYVVHGQIIYGPAYSGRETVYSNASLLIQNVTQEDAGSYLHIIKRGDGTGGVTGYFTVT  
 LYSETPKPSISSNLPREVMEAVRLICDPETPDASYLWLLNGQNLPMTHRLQLSKTNRLLYLFVGTKYI  
 AGPYECEIRNPVSASRSDPVTLNLLPKLPMPYITINNLPREKKDVLAF TCEPKSRNYTYIWWLNGQSLP  
 VSPRVKRPIENRILILPSVTRNETGPYQCEIRDYGGIRSNPVTNLVLYGPDLPRIYPSFTYYRSGENLD  
 LSCFADSNPPAEYSWTINGKFLQSGQKLFIPQITTNHSGLYACSVRNSATGKEISKSMIVKVS GPCHGNQ  
 TESH

**TR**TRPLEQKLISEEDLAANDILDYKDDDDKV

**Chromatograms:**

[https://cdn.origene.com/chromatograms/mk6666\\_d04.zip](https://cdn.origene.com/chromatograms/mk6666_d04.zip)

**Restriction Sites:**

SgfI-MluI

**Cloning Scheme:**


**ACCN:** NM\_001031850

**ORF Size:** 1272 bp

**OTI Disclaimer:** The molecular sequence of this clone aligns with the gene accession number as a point of reference only. However, individual transcript sequences of the same gene can differ through naturally occurring variations (e.g. polymorphisms), each with its own valid existence. This clone is substantially in agreement with the reference, but a complete review of all prevailing variants is recommended prior to use. [More info](#)

**OTI Annotation:** This clone was engineered to express the complete ORF with an expression tag. Expression varies depending on the nature of the gene.

**Components:** The ORF clone is ion-exchange column purified and shipped in a 2D barcoded Matrix tube containing 10ug of transfection-ready, dried plasmid DNA (reconstitute with 100 ul of water).

**Reconstitution Method:**

1. Centrifuge at 5,000xg for 5min.
2. Carefully open the tube and add 100ul of sterile water to dissolve the DNA.
3. Close the tube and incubate for 10 minutes at room temperature.
4. Briefly vortex the tube and then do a quick spin (less than 5000xg) to concentrate the liquid at the bottom.
5. Store the suspended plasmid at -20°C. The DNA is stable for at least one year from date of shipping when stored at -20°C.

**RefSeq:** [NM\\_001031850.4](#)

**RefSeq Size:** 1743 bp

**RefSeq ORF:** 1275 bp

**Locus ID:** 5675

**UniProt ID:** [Q00889](#)

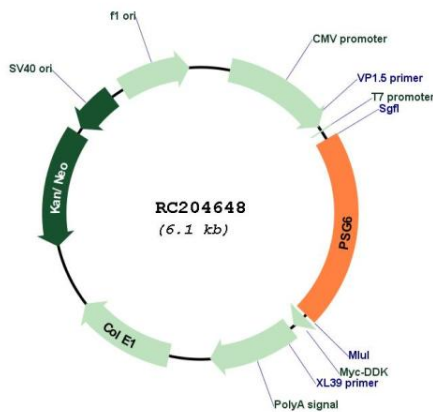
**Cytogenetics:** 19q13.31

**Protein Families:** Secreted Protein

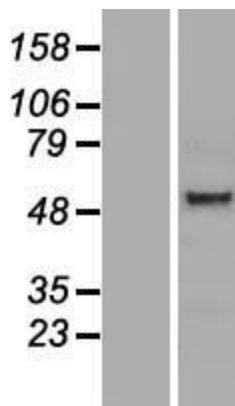
**MW:** 47.5 kDa

**Gene Summary:** This gene is a member of the pregnancy-specific glycoprotein (PSG) gene family. The PSG genes are a subgroup of the carcinoembryonic antigen (CEA) family of immunoglobulin-like genes, and are found in a gene cluster at 19q13.1-q13.2 telomeric to another cluster of CEA-related genes. The PSG genes are expressed by placental trophoblasts and released into the maternal circulation during pregnancy, and are thought to be essential for maintenance of normal pregnancy. The protein encoded by this gene contains the Arg-Gly-Asp tripeptide associated with cellular adhesion and recognition. Alternative splicing results in multiple transcript variants and protein isoforms. [provided by RefSeq, Jul 2012]

**Product images:**



Circular map for RC204648



Western blot validation of overexpression lysate (Cat# [LY422207]) using anti-DDK antibody (Cat# [TA50011-100]). Left: Cell lysates from untransfected HEK293T cells; Right: Cell lysates from HEK293T cells transfected with RC204648 using transfection reagent MegaTran 2.0 (Cat# [TT210002]).